

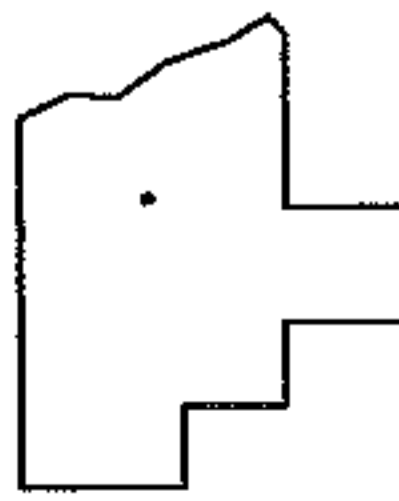
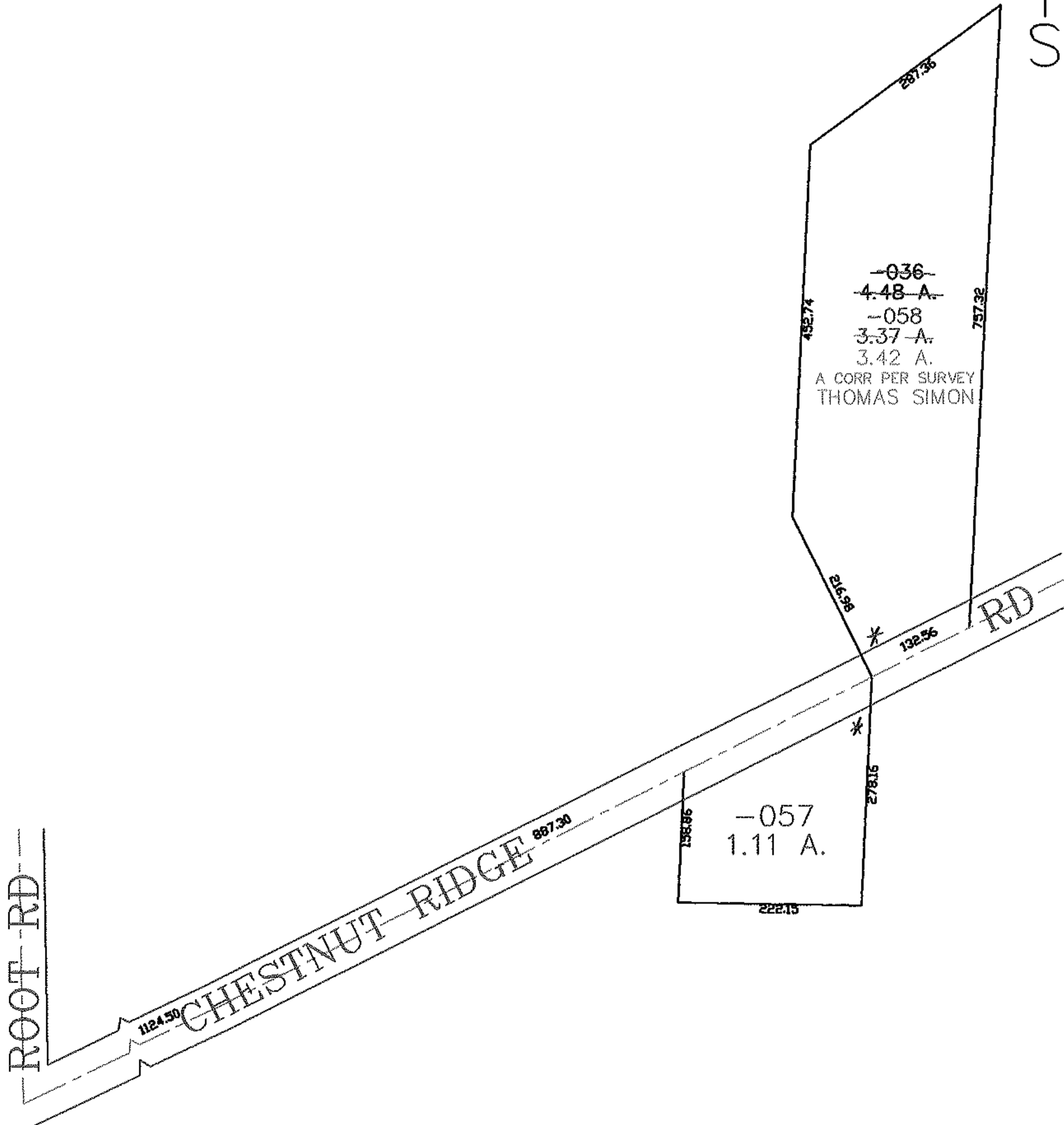
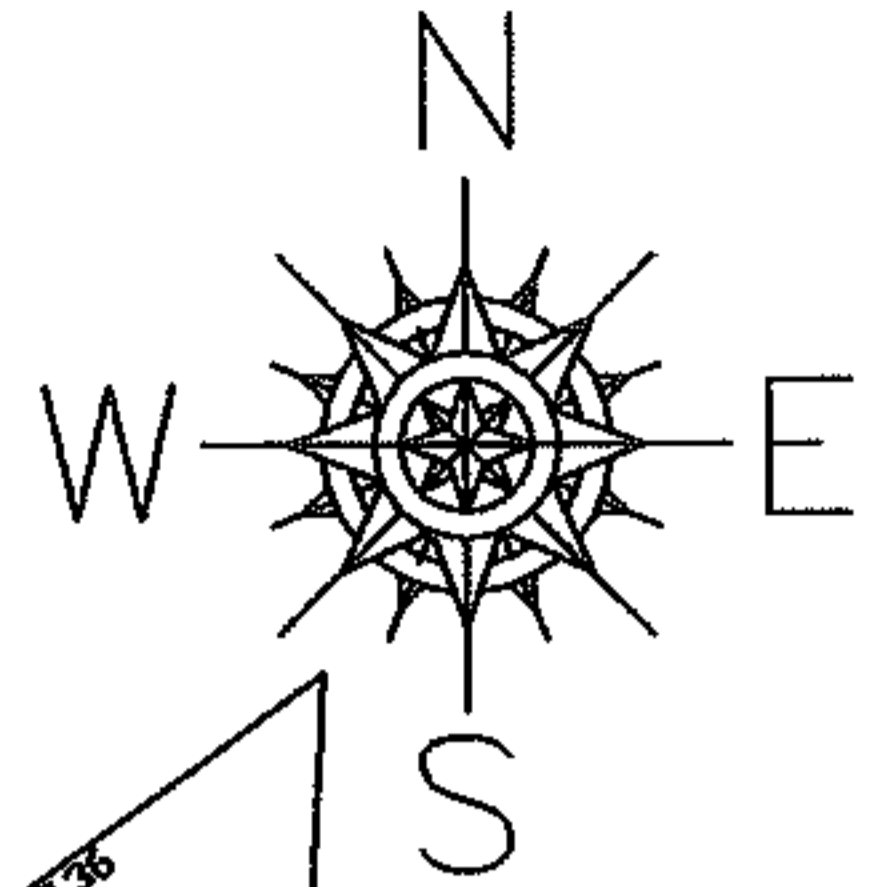
RASTER

PARENT PARCEL: 07-00-015-110-036

CHILD PARCEL: 07-0-015-110-057, -058

STARTING POINT: CENTERLINE OF ROOT RD & CHESTNUT RIDGE RD

07-02351



SPLITS/DEEDS PROCESSED

LORAIN COUNTY TAX MAP DEPARTMENT
226 MIDDLE AVE. ELYRIA, OHIO

SURVEYED BY: THOMAS SIMON

CLOSURE: 0.00 : 10.000

MAP PAGE(S): 07-00-015-D

APPROVED BY: JAH DATE: 4-2-07

SCALE: 1" = 200 PRIOR INSTRUMENT: 200600935