

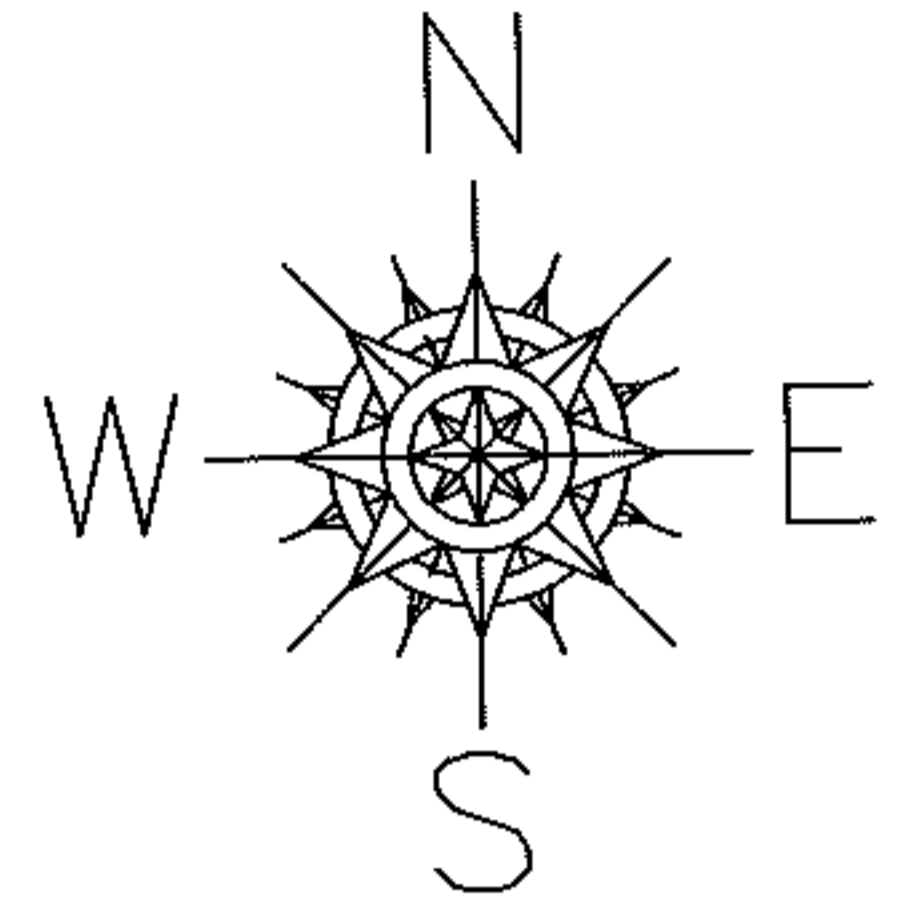
Raster

PARENT PARCEL: 02-01-008-101-313

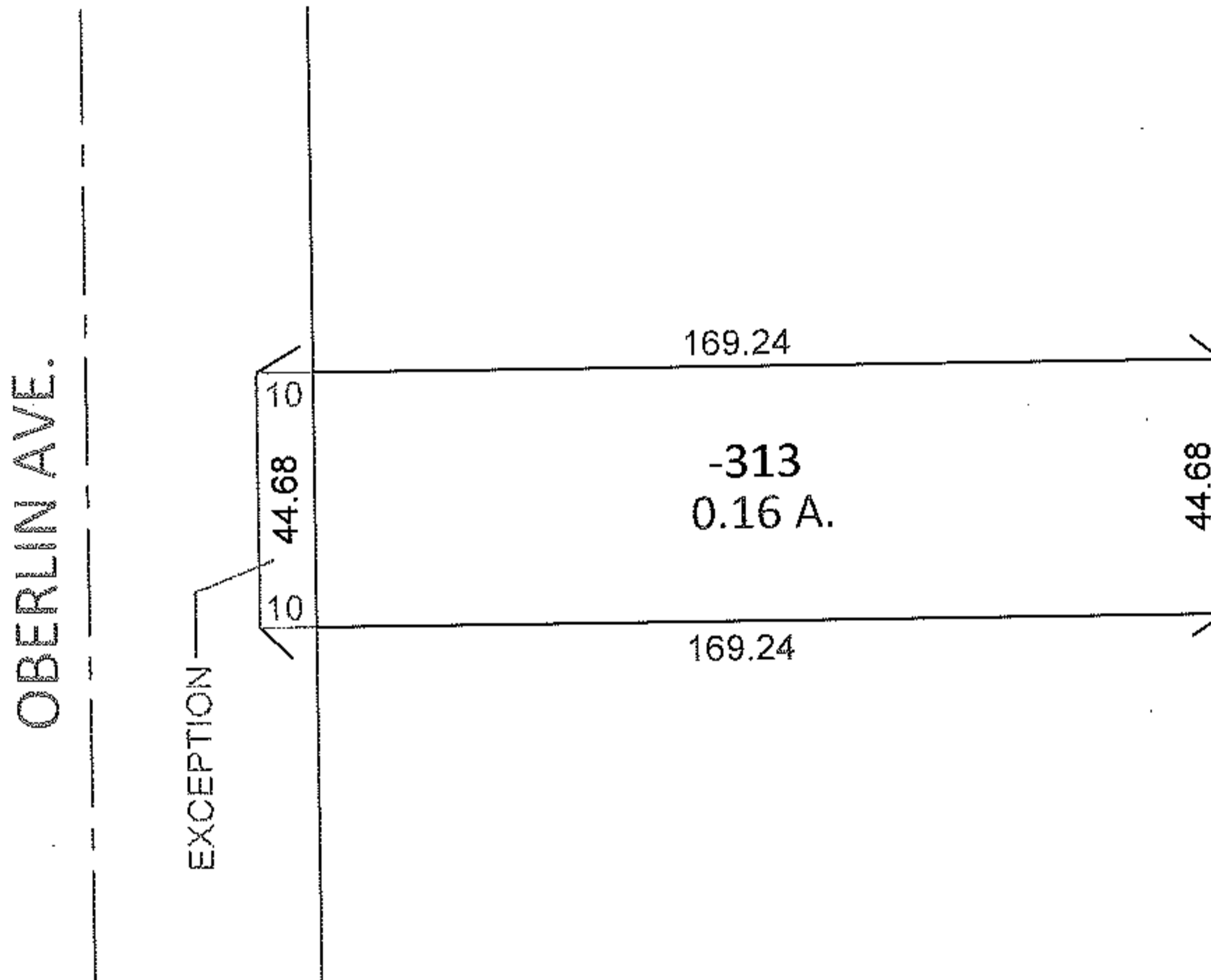
CHILD PARCEL:

STARTING POINT: NORTHWEST CORNER OF S/L 233 IN OBERLIN AVE. HEIGHTS SUB.(VOL.12 PG.23)

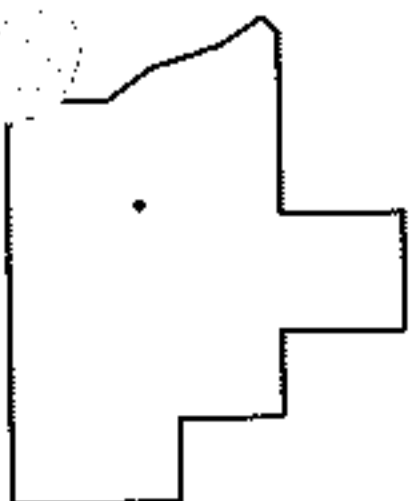
11-02349-C



MAP CORRECTION ONLY



ACREAGE CORRECTION WAS DONE IN 1994 BY PINK TICKET #20707-C



SPLITS/DEEDS PROCESSED

LORAIN COUNTY TAX MAP DEPARTMENT
226 MIDDLE AVE. ELYRIA, OHIO

SURVEYED BY: N/A

CLOSURE: N/A

MAP PAGE(S): 2-01-008-A

APPROVED BY: RRM DATE: 9-7-11

SCALE: 1"= 50' PRIOR INST.: OR 935/890