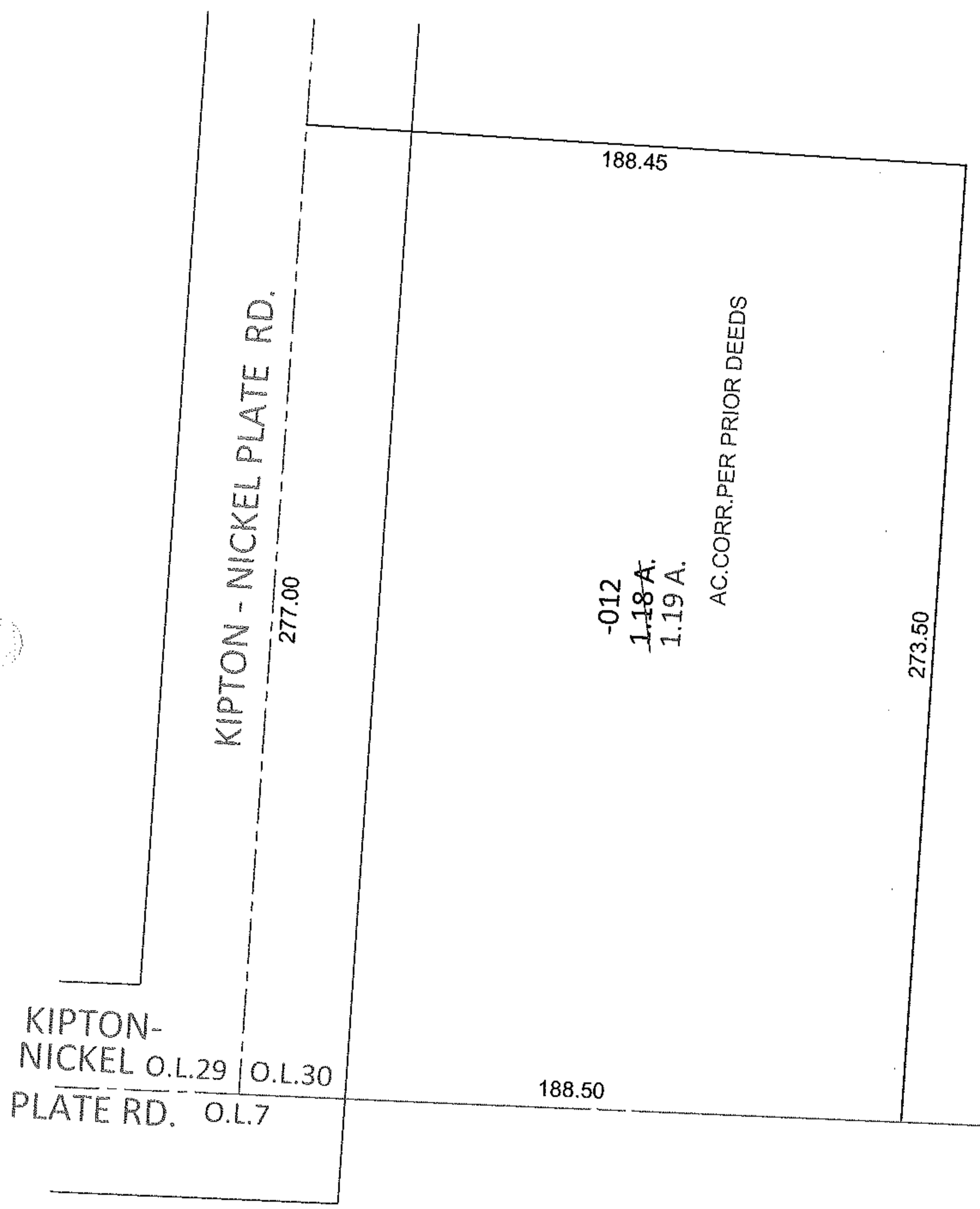
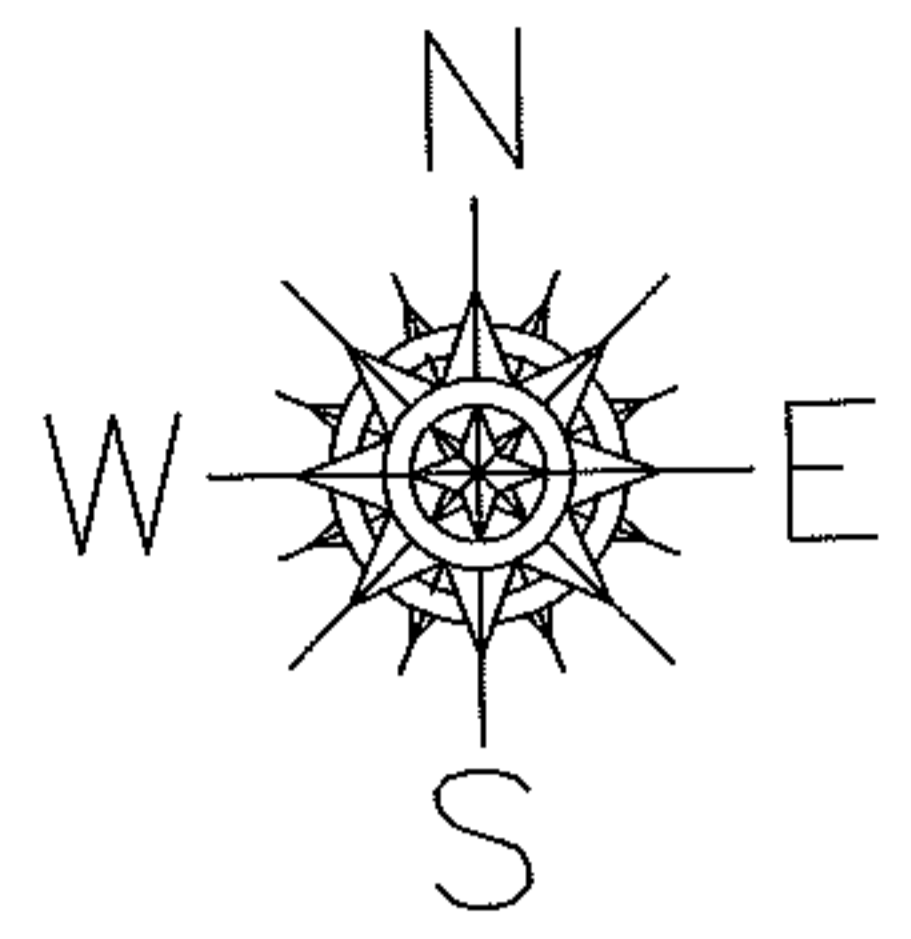


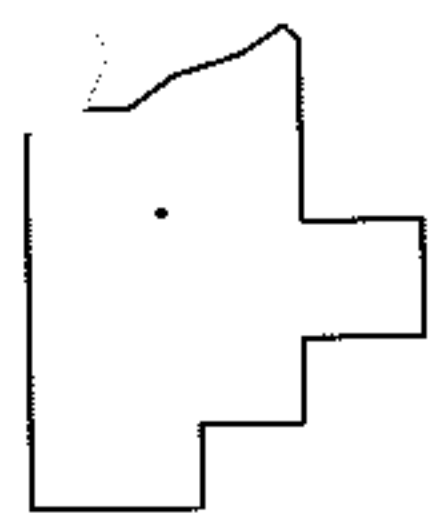
Raster

PARENT PARCEL: 13-11-030-000-012  
CHILD PARCEL: \_\_\_\_\_  
STARTING POINT: STONE MONUMENT AT THE SOUTH END OF BAUMHART RD. IN THE  
SOUTHWEST CORNER OF O.L.30

11-02347-A



\*20070185970  
\*20030888080  
\*OR 135/242



**SPLITS/DEEDS PROCESSED**  
LORAIN COUNTY TAX MAP DEPARTMENT  
226 MIDDLE AVE. ELYRIA, OHIO

SURVEYED BY: N/A  
CLOSURE: .01:10,000  
MAP PAGE(S): 13-D  
APPROVED BY: RRM DATE: 9-1-11  
SCALE: 1"= 50' PRIOR INST.: \*SEE ABOVE