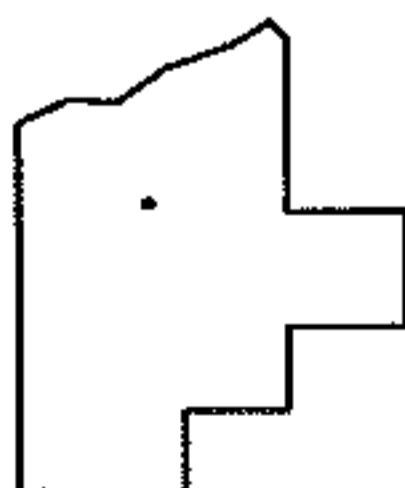
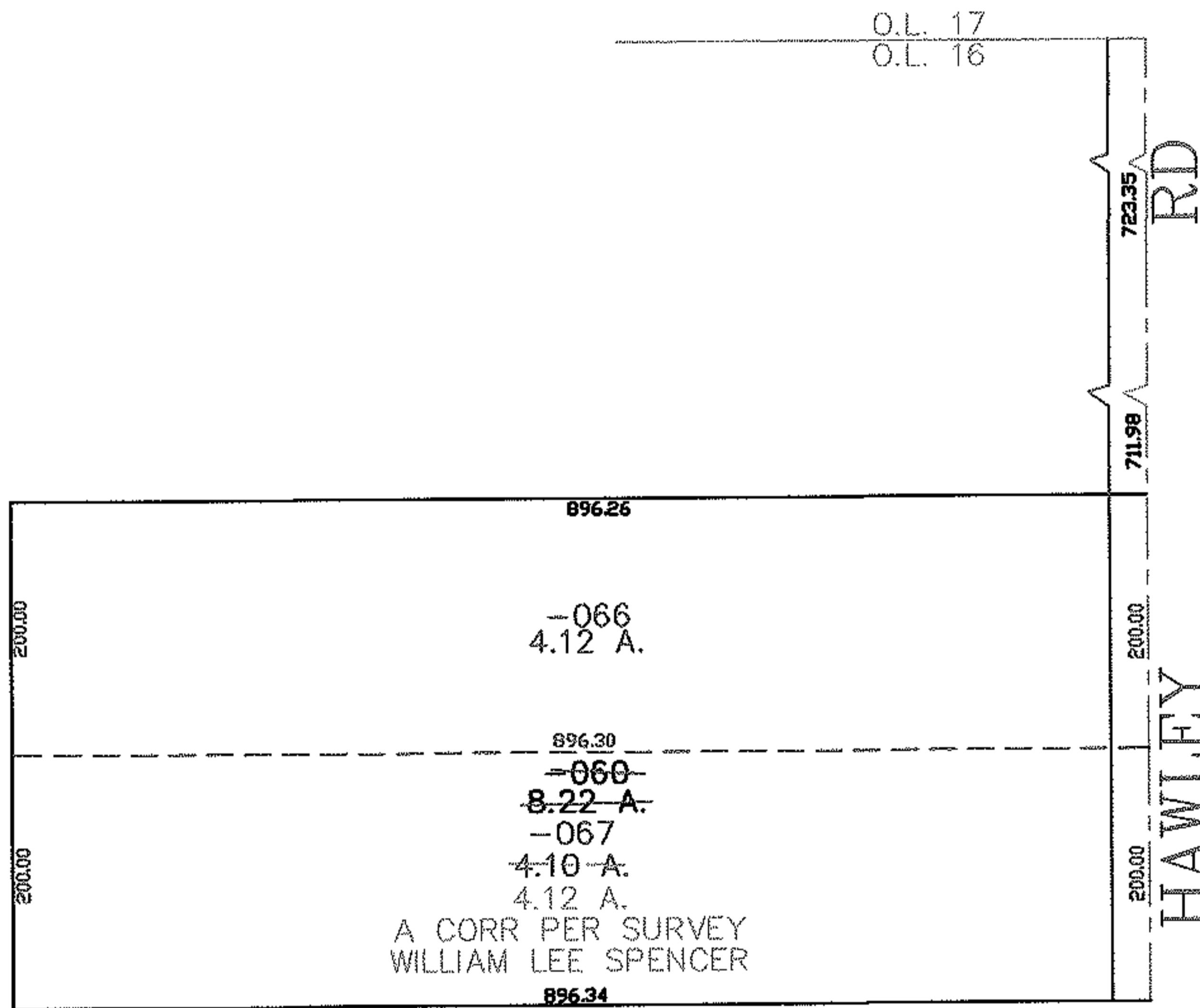
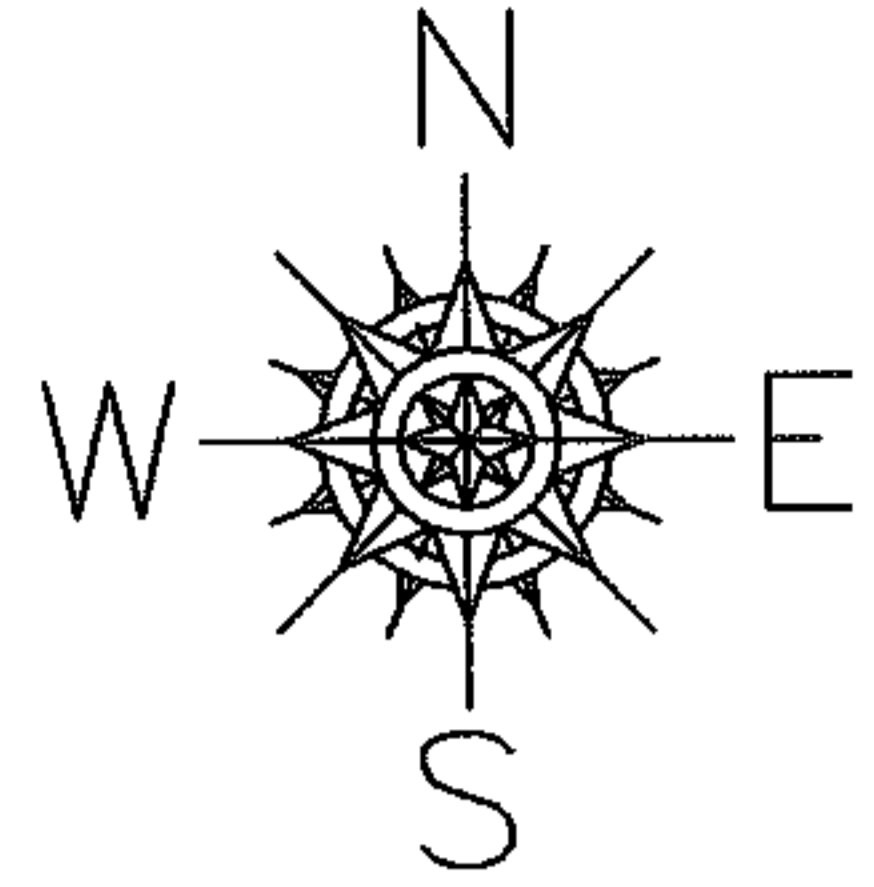


PARENT PARCEL: 18-00-016-000-060

CHILD PARCEL: 18-00-016-000-066, -067

STARTING POINT: CENTERLINE OF HAWLEY RD & O.L. 16

07-02346



SPLITS/DEEDS PROCESSED
 LORAIN COUNTY TAX MAP DEPARTMENT
 226 MIDDLE AVE. ELYRIA, OHIO

SURVEYED BY: WILLIAM LEE SPENCER
 CLOSURE: 0.00 ; 10.000
 MAP PAGE(S): 18-00-016-B
 APPROVED BY: JAH DATE: 3-27-07
 SCALE: 1" = 200 PRIOR INSTRUMENT: OR 829/930