

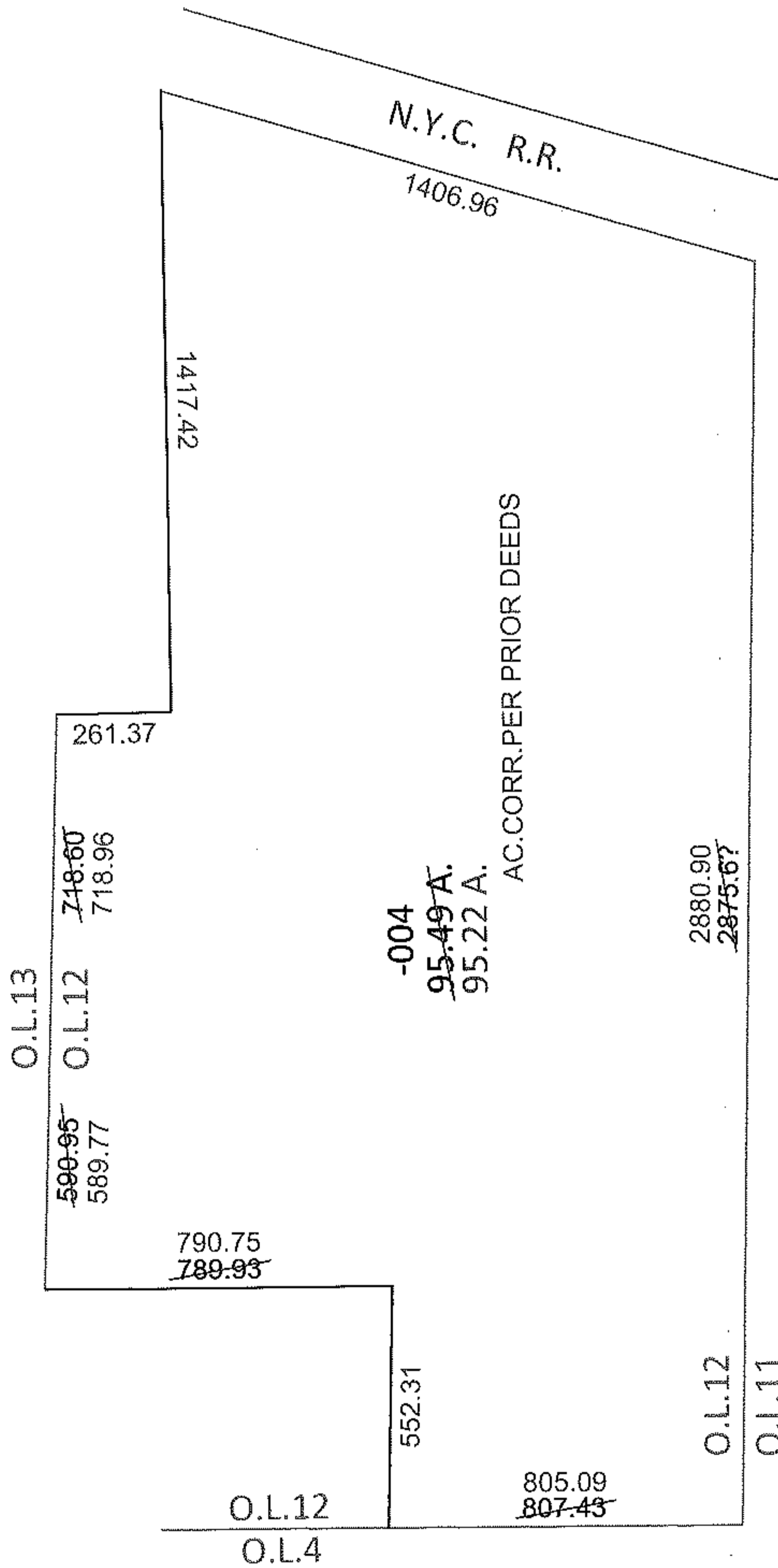
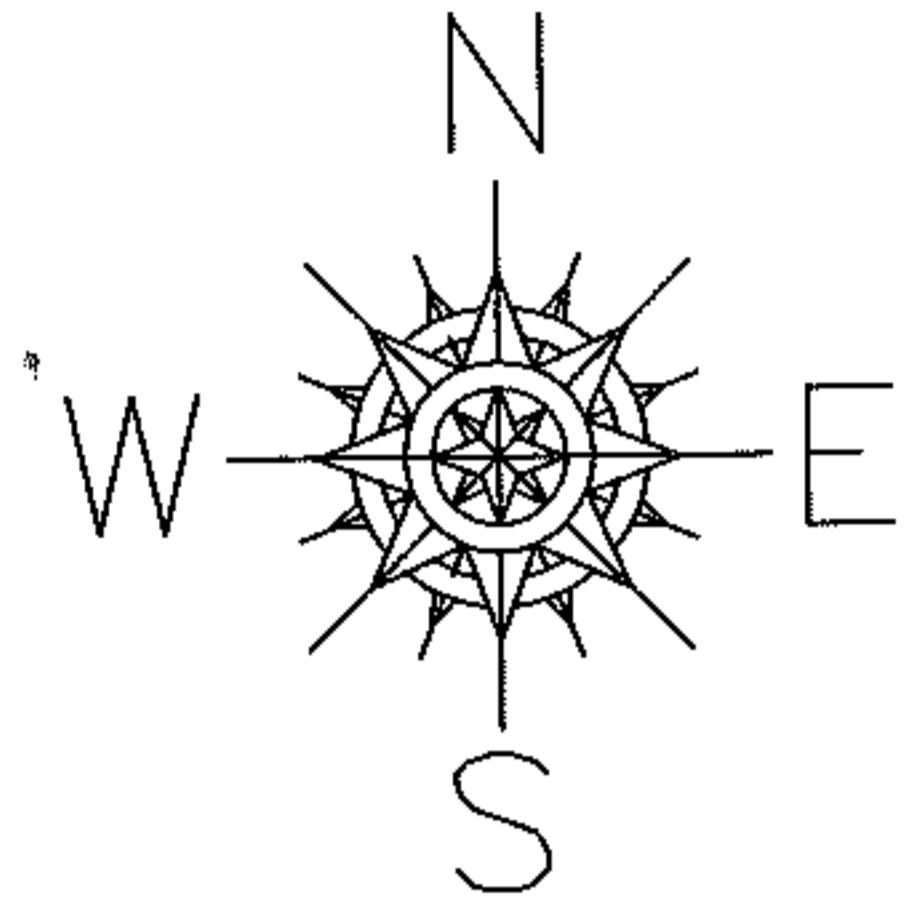
RASTER

PARENT PARCEL: 06-24-012-102-004

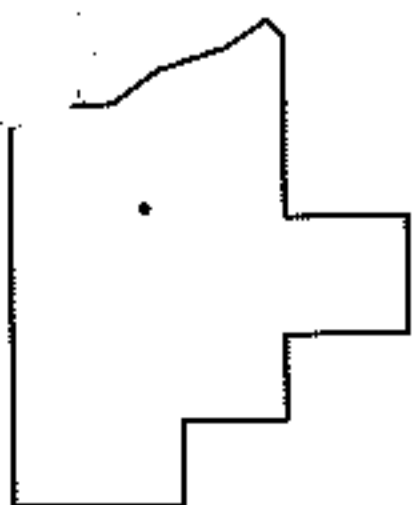
CHILD PARCEL:

STARTING POINT: SOUTHEAST CORNER OF O.L.12

11-02345-A



*19990633660
*20110377091



SPLITS/DEEDS PROCESSED

LORAIN COUNTY TAX MAP DEPARTMENT
226 MIDDLE AVE. ELYRIA, OHIO

SURVEYED BY: N/A
 CLOSURE: .01:10,000
 MAP PAGE(S): 6-96, 6-97, ~~6-115~~ 6-114
 APPROVED BY: RRM DATE: 8-30-11
 SCALE: 1"= 500 PRIOR INST.: *SEE ABOVE