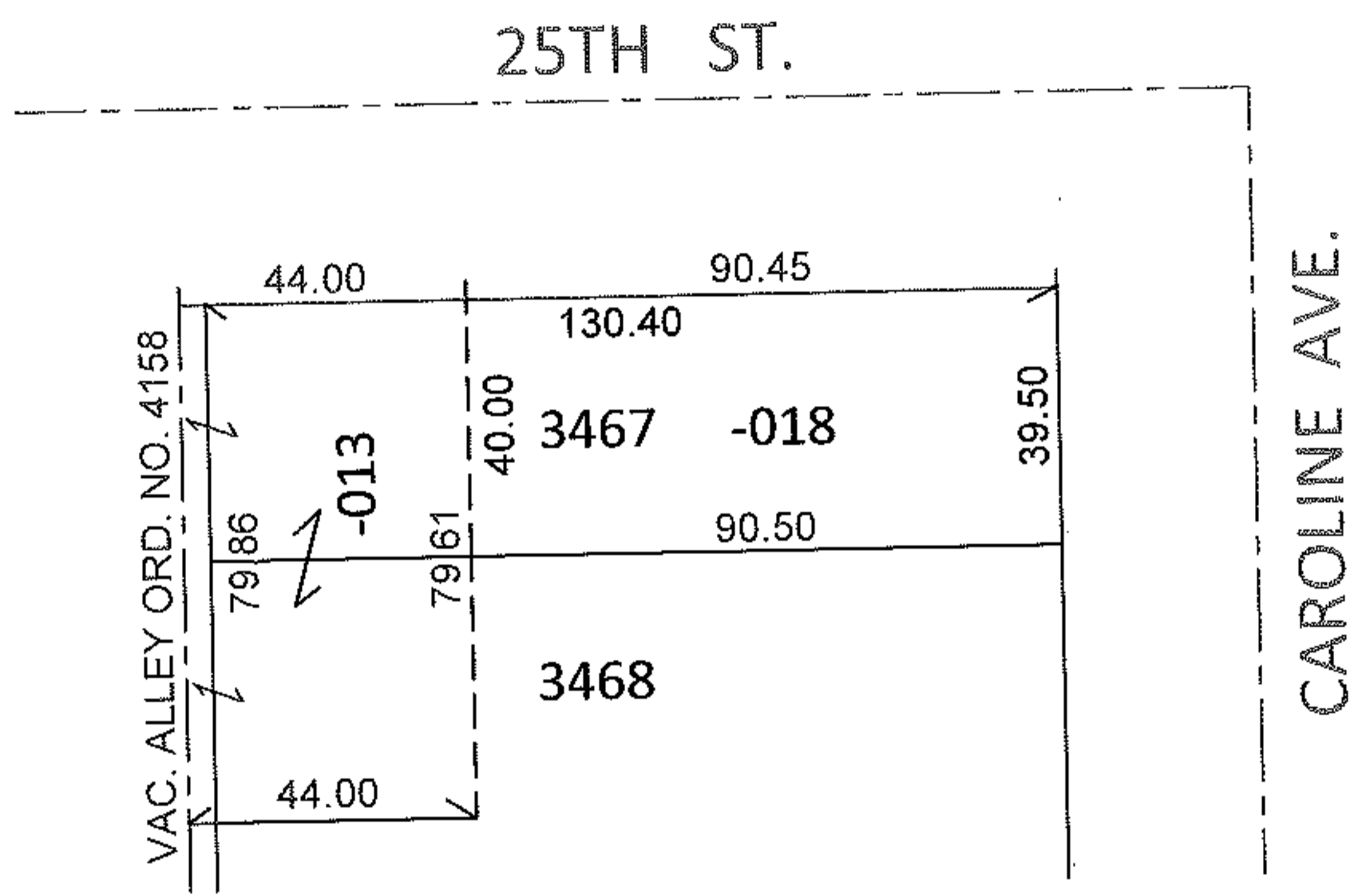
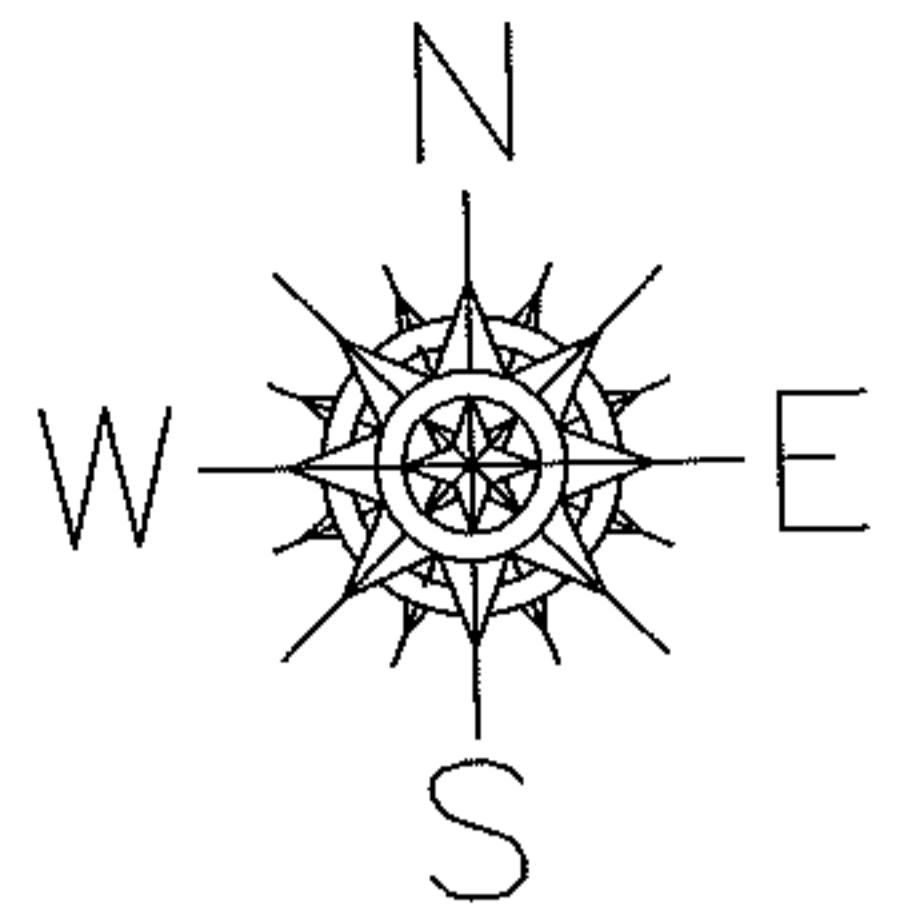


RASTER

PARENT PARCEL: 02-00-093-113-013, -018
CHILD PARCEL: _____
STARTING POINT: PART OF S/L'S 3467 & 3468 IN SHEFFIELD LAND & IMP. CO.SUB. NO. 6(VOL.6 PG.12)

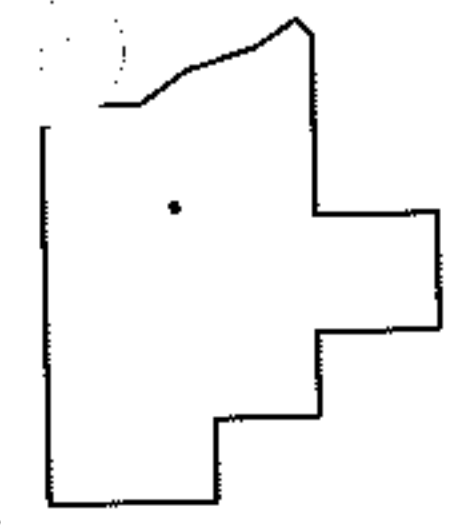
11-02339-C



FRONTAGE & DEPTH CORRECTION

02-00-093-113-013
44 X 79.86
~~39.90 X 79~~

PER SURV. R. HOLLIS AND VAC. ORD. 4158



SPLITS/DEEDS PROCESSED
LORAIN COUNTY TAX MAP DEPARTMENT
226 MIDDLE AVE. ELYRIA, OHIO

SURVEYED BY: RAY E. HOLLIS
CLOSURE: N/A
MAP PAGE(S): 2-00-093-B
APPROVED BY: RRM DATE: 8-23-11
SCALE: 1" = 50' PRIOR INST.: 20080261285