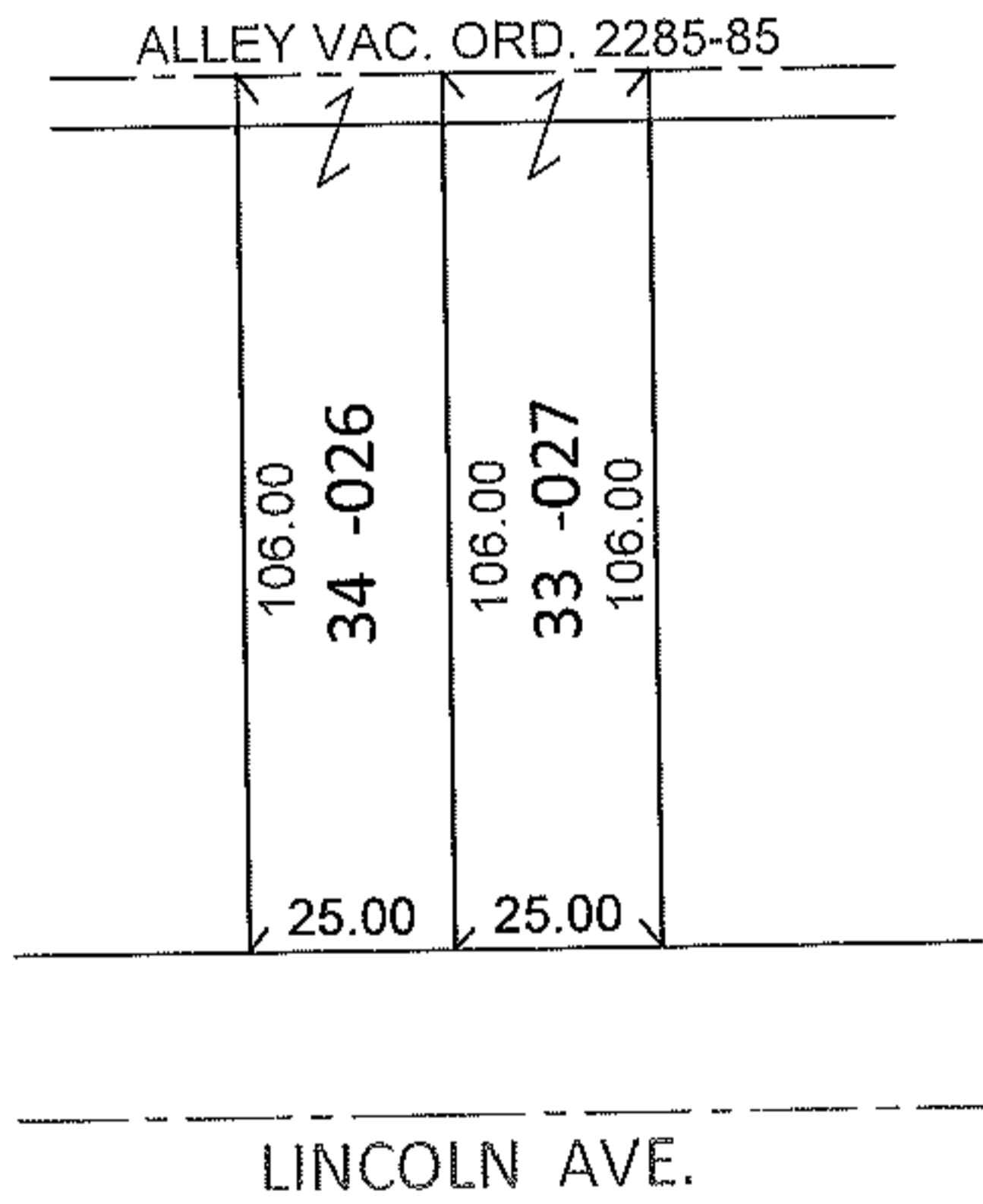
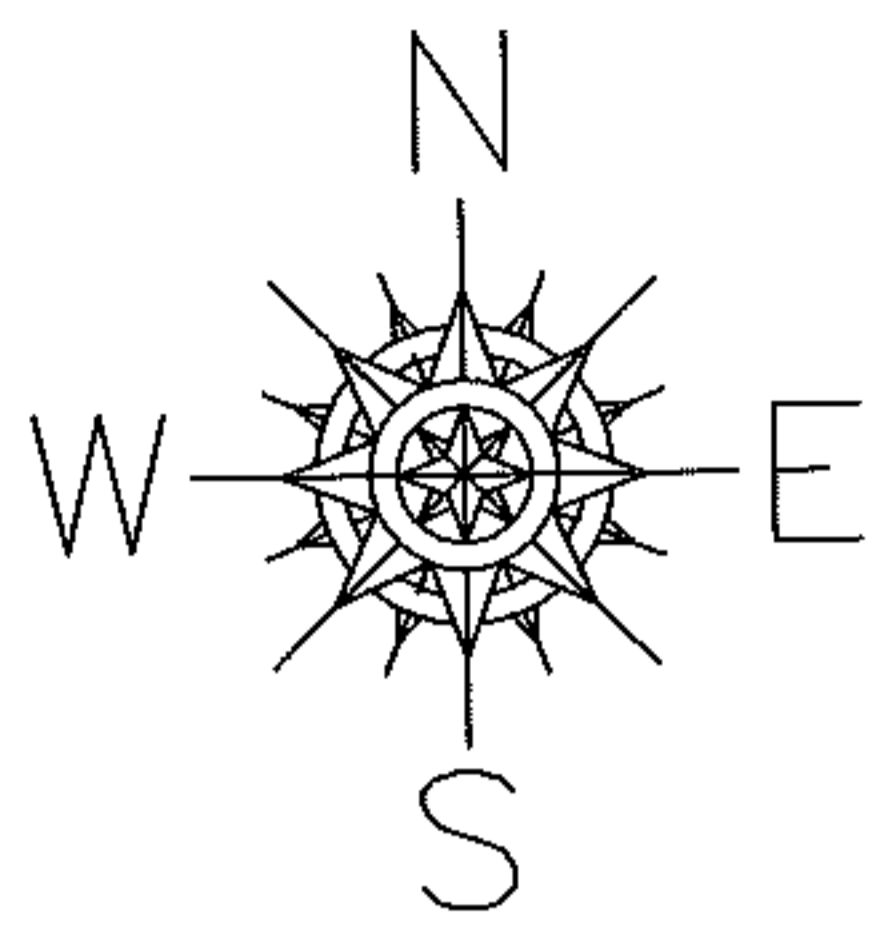


RASTER

PARENT PARCEL: 07-00-009-103-026, -027
CHILD PARCEL:
STARTING POINT: S/L'S 33 & 34 IN BLOCK 4 OF RIDGEVILLE HEIGHTS SUB. NO.2 (VOL. 11 PG.15)

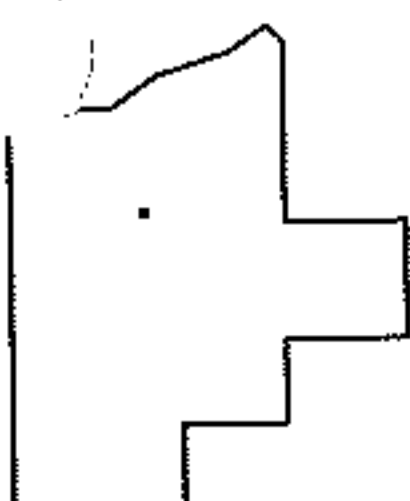
11-02337-C



DEPTH CORRECTION

07-00-009-103-026	07-00-009-103-027
106	106
25 X 100	25 X 100

CORRECTION PER DEED AND VAC ORD. 2285-85



SPLITS/DEEDS PROCESSED

LORAIN COUNTY TAX MAP DEPARTMENT
226 MIDDLE AVE. ELYRIA, OHIO

SURVEYED BY: N/A
 CLOSURE: N/A
 MAP PAGE(S): 7-00-009-A
 APPROVED BY: RRM DATE: 8-18-11
 SCALE: 1"= 50' PRIOR INST.: 20020818109