

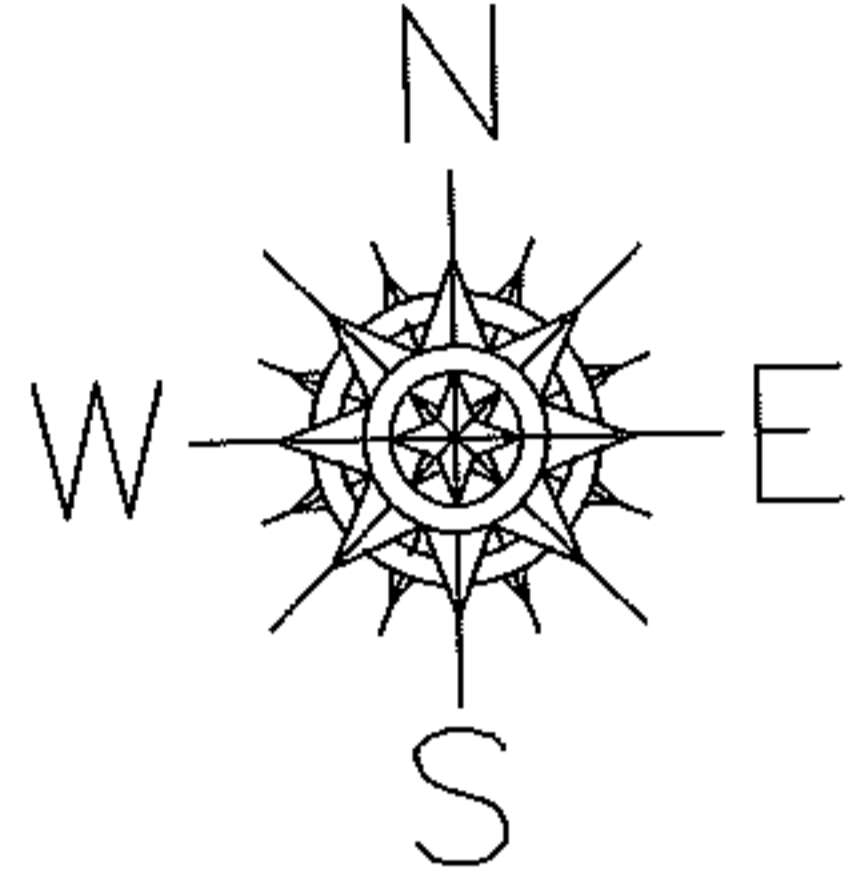
RASTER

PARENT PARCEL: 01-00-022-104-038

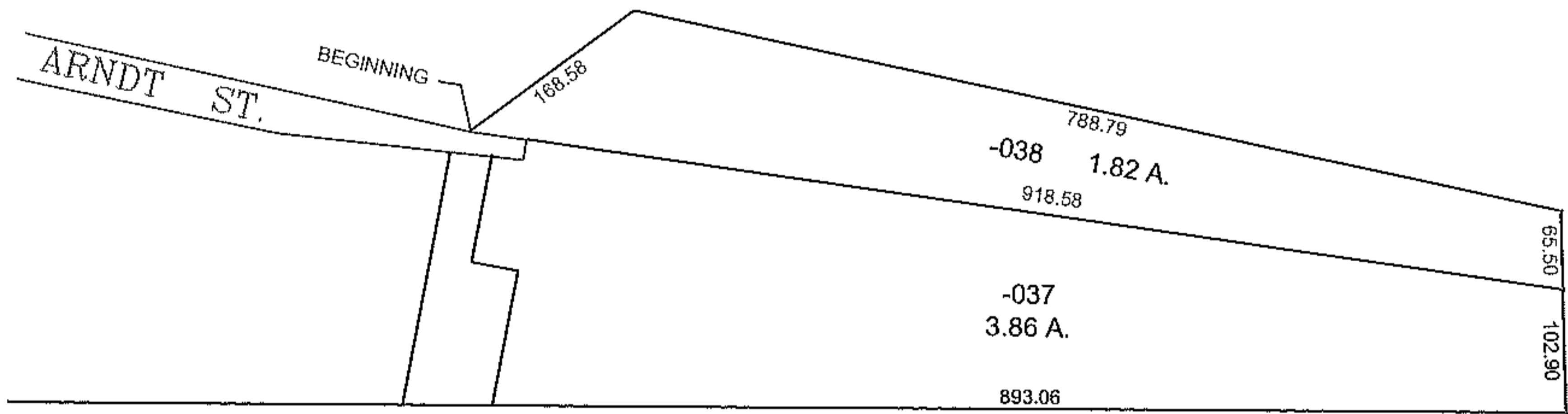
CHILD PARCEL: XX-XX-XXX-XXX-XXX

STARTING POINT: I.P. S.E. CORNER ON JOHN URSEM PROPERTY

11-02335-C



MAP CORRECTION



SPLITS/DEEDS PROCESSED

LORAIN COUNTY TAX MAP DEPARTMENT
226 MIDDLE AVE. ELYRIA, OHIO

SURVEYED BY: JOSEPH F. O'DONNELL JR.

CLOSURE: 0.01 : 10,000

MAP PAGE(S): 01-00-022-A

APPROVED BY: TJS DATE: 8/11/11

SCALE: 1" = 200 PRIOR INSTRUMENT: 20100334056