

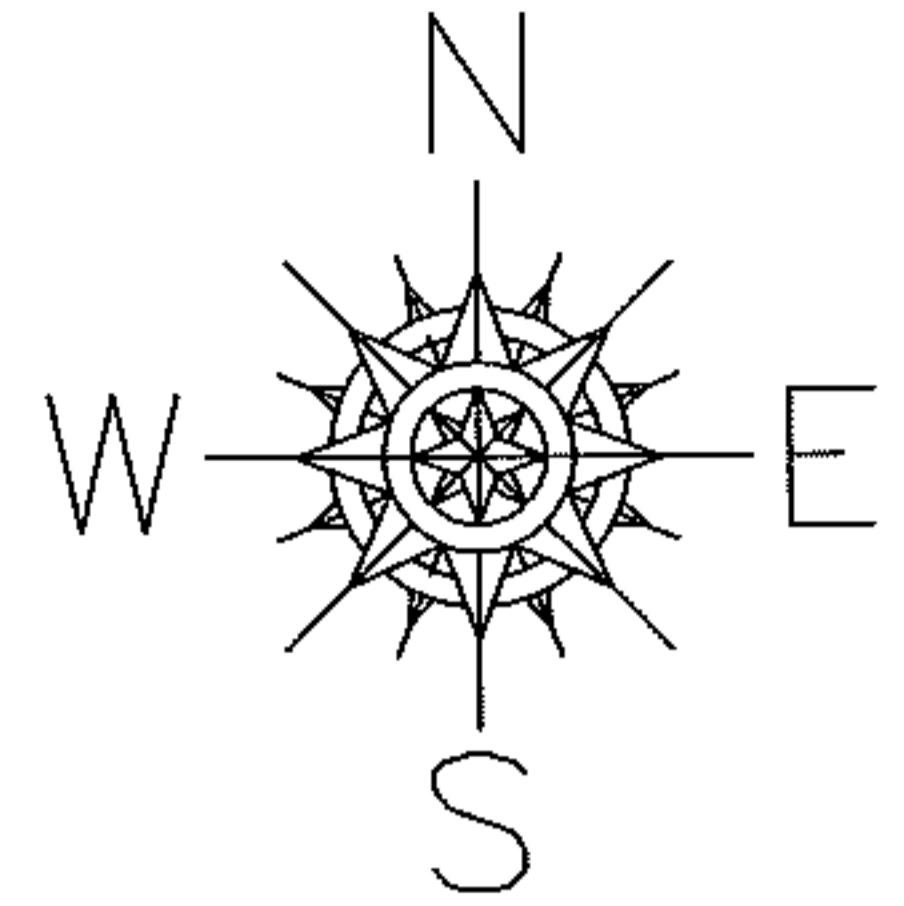
RASTER

PARENT PARCEL: 06-25-036-103-005

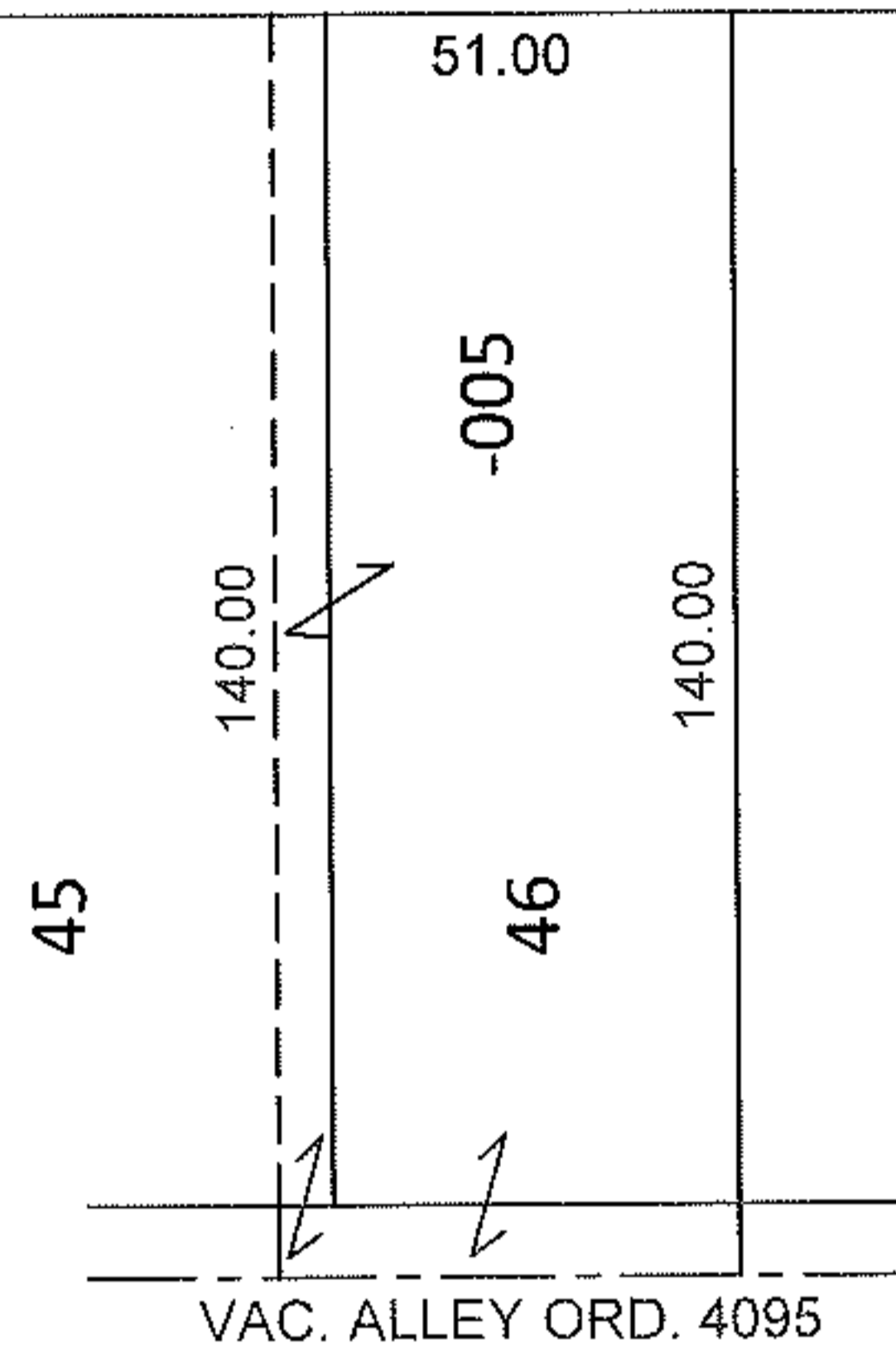
CHILD PARCEL:

STARTING POINT: S/L'S 45 AND 46 IN DILWORTH'S EAST ELYRIA SUB. (VOL. 6 PG. 32)

11-02329-C



DILWORTH ST.



DEPTH CORRECTION

06-25-036-103-005

140
51 X ~~132~~

PER DEED AND ORD. NO. 4095

SPLITS/DEEDS PROCESSED

LORAIN COUNTY TAX MAP DEPARTMENT
226 MIDDLE AVE. ELYRIA, OHIO

SURVEYED BY: N/A

CLOSURE: N/A

MAP PAGE(S): 6-86

APPROVED BY: RRM DATE: 7-27-11

SCALE: 1"= 50' PRIOR INST.: 20110367161