

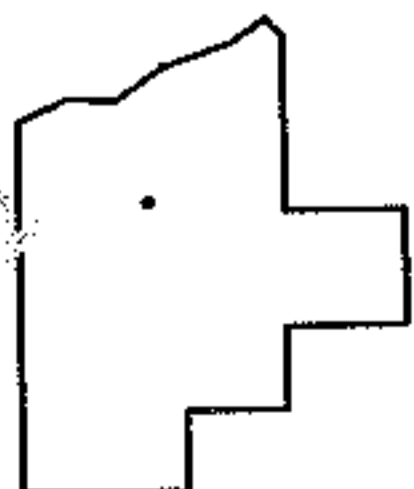
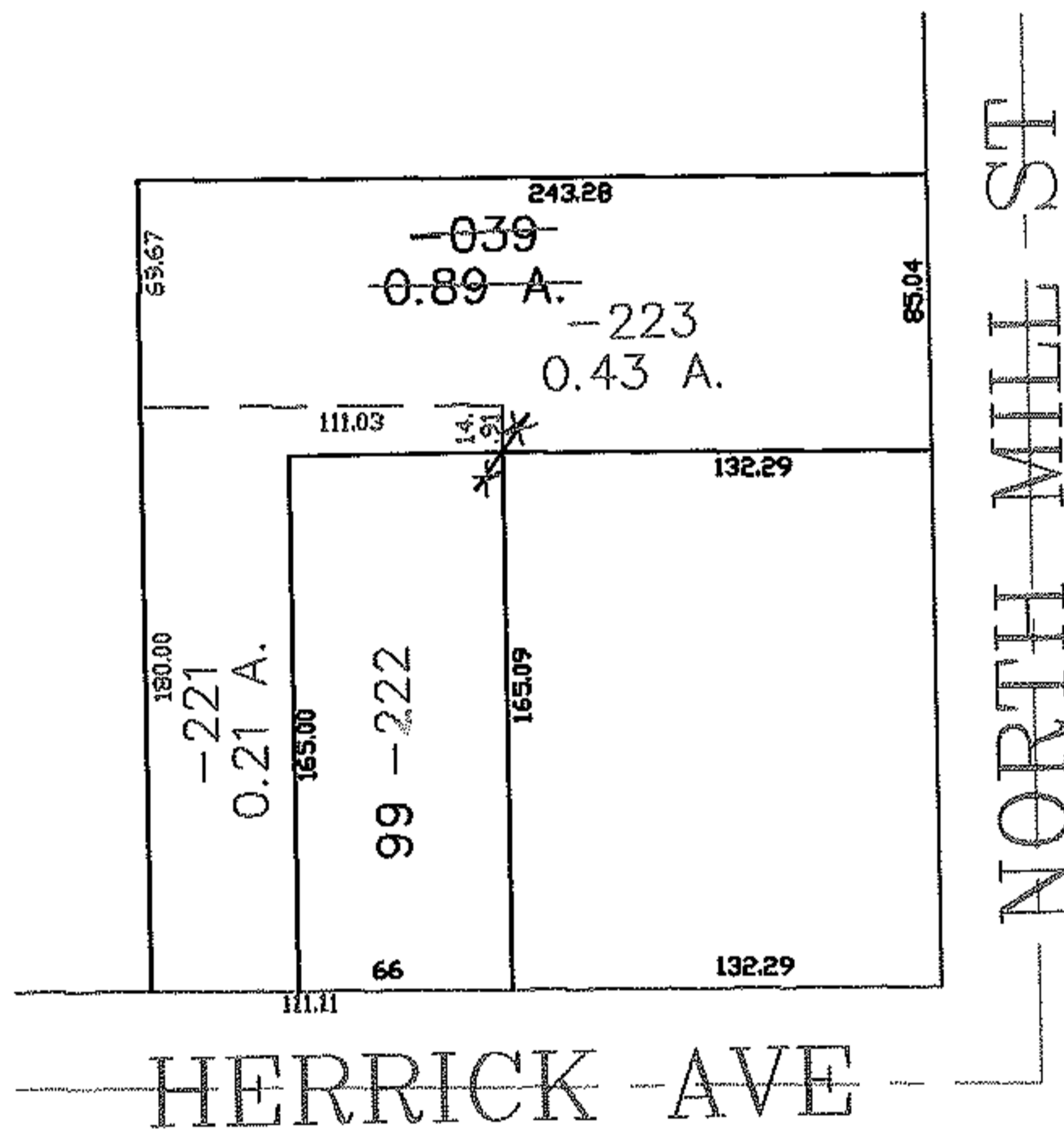
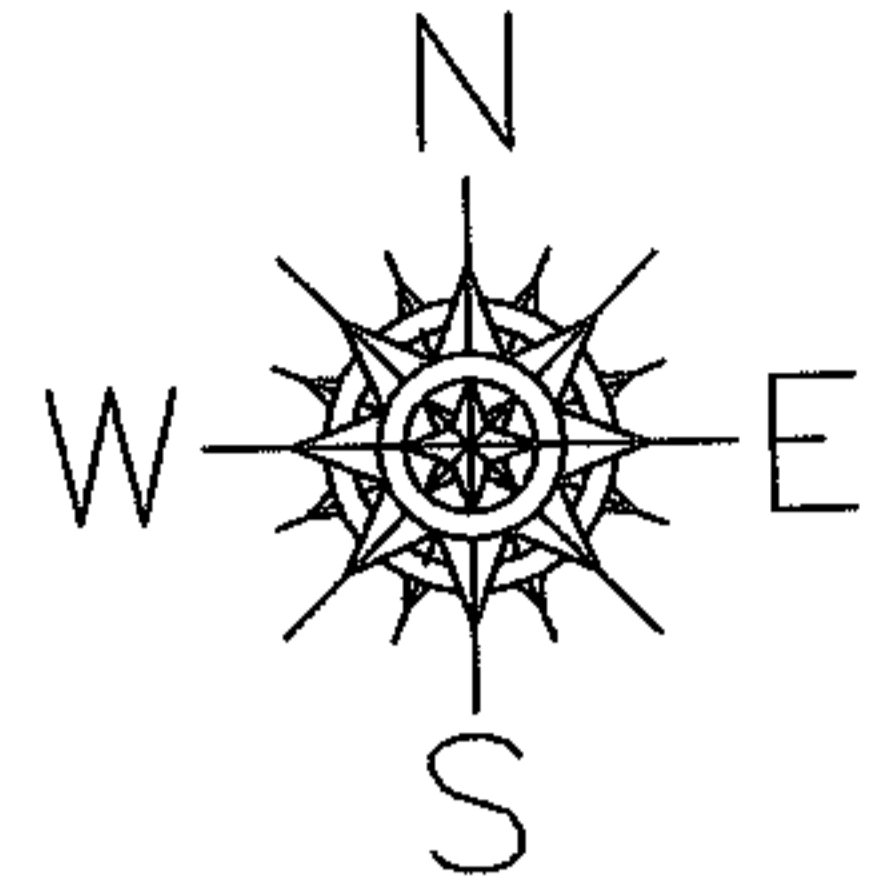
RASTER

PARENT PARCEL: 18-00-028-101-039

CHILD PARCEL: 18-00-028-101-221 THRU -223

STARTING POINT: SIDELINE OF HERRICK AVE & NORTH MILL ST

07-02325



SPLITS/DEEDS PROCESSED

LORAIN COUNTY TAX MAP DEPARTMENT
226 MIDDLE AVE. ELYRIA, OHIO

SURVEYED BY: JAMES B ROOT

CLOSURE: 0.00 : 10.000

MAP PAGE(S): 18-00-028-C

APPROVED BY: JAH DATE: 2-13-07

SCALE: 1" = 100 PRIOR INSTRUMENT: 20060176897