

RASTER

PARENT PARCEL: 09-00-085-108-020

CHILD PARCEL: XX-XX-XXX-XXX-XXX

STARTING POINT: I.P. FD, CL OF ELMS ST. & INT. OF EAST SIDE OF S.CEDAR ST.

11-02318-C

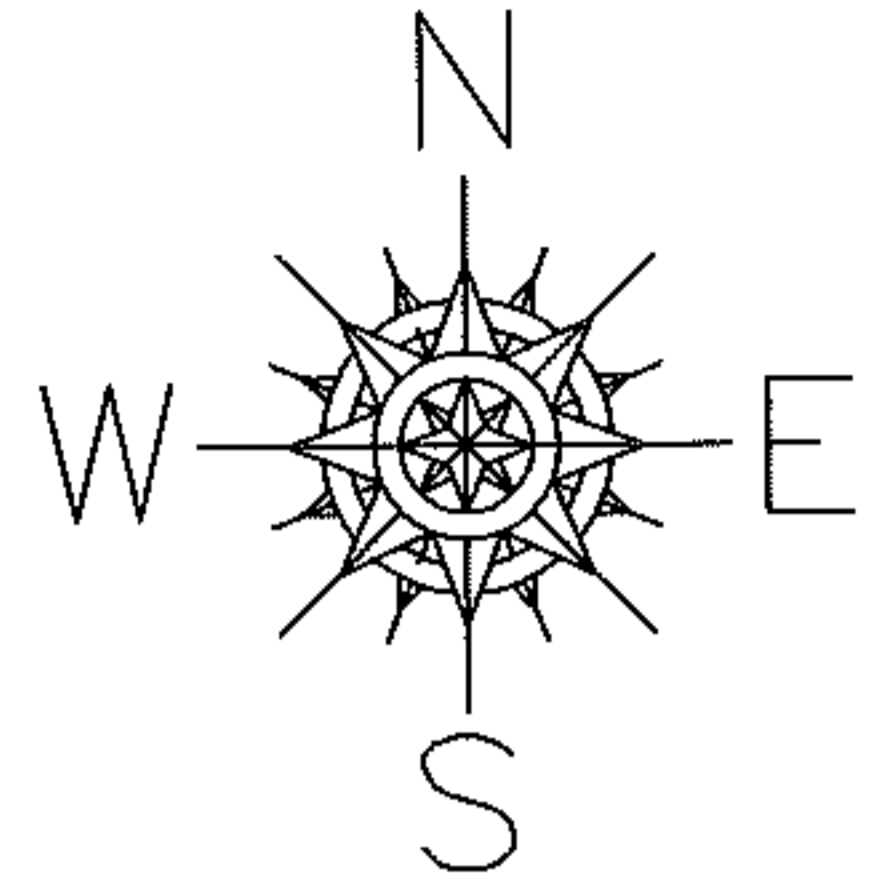
FRONTAGE CORRECTION

09-00-085-108-020

~~54.25 X 198~~

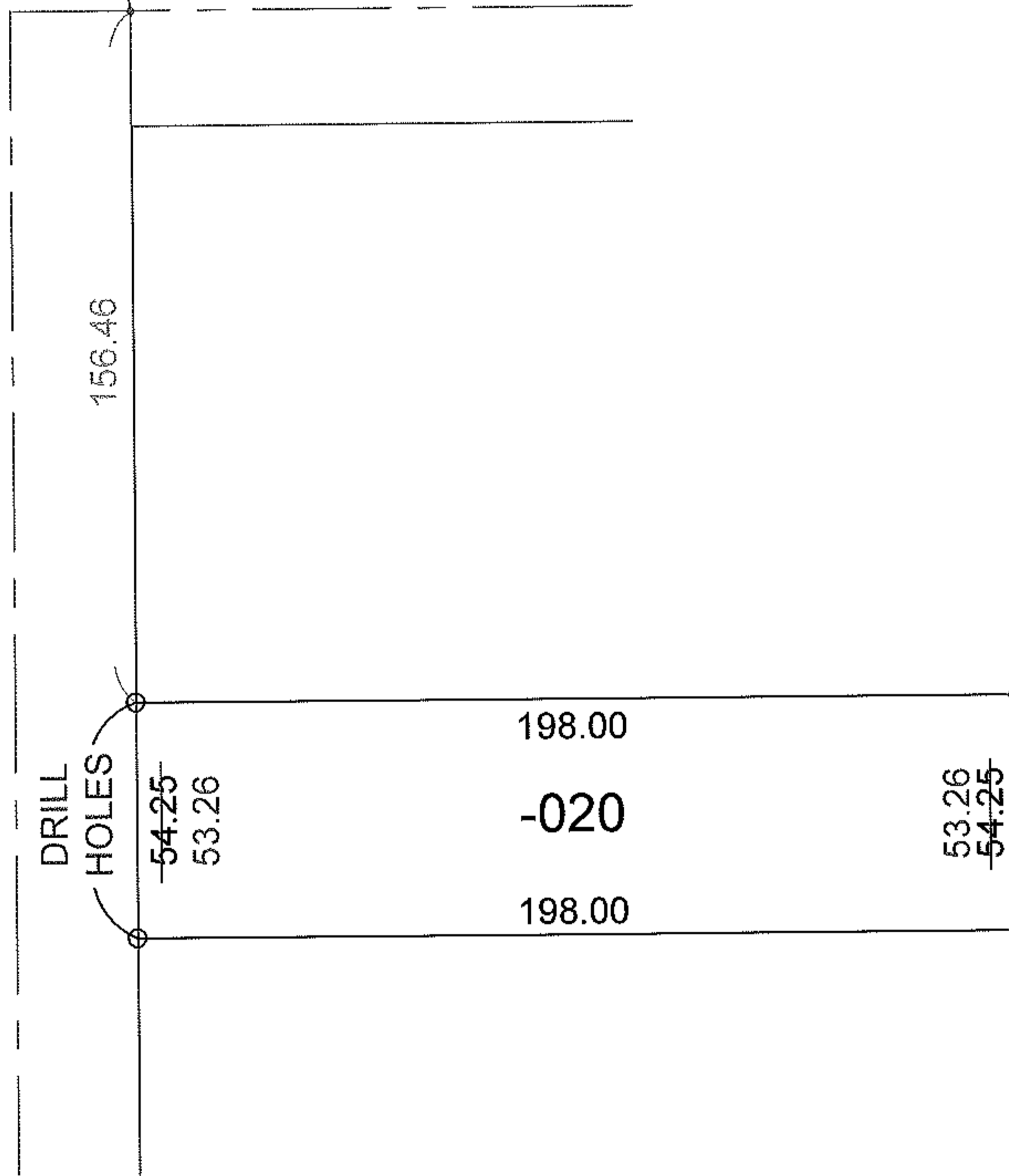
53.26 X 198

CORR. PER SURV.
WARDEN & LAUNDEN



BEGINNING ELM ST. 52'

S. CEDAR ST. 54'



SPLITS/DEEDS PROCESSED

LORAIN COUNTY TAX MAP DEPARTMENT
226 MIDDLE AVE. ELYRIA, OHIO

SURVEYED BY: WARDEN & LAUNDEN

CLOSURE: 0.00 : 10,000

MAP PAGE(S): 9-00-085-A

APPROVED BY: TJS DATE: 7/11/11

SCALE: 1" = 50' PRIOR INST.: 20090293050