

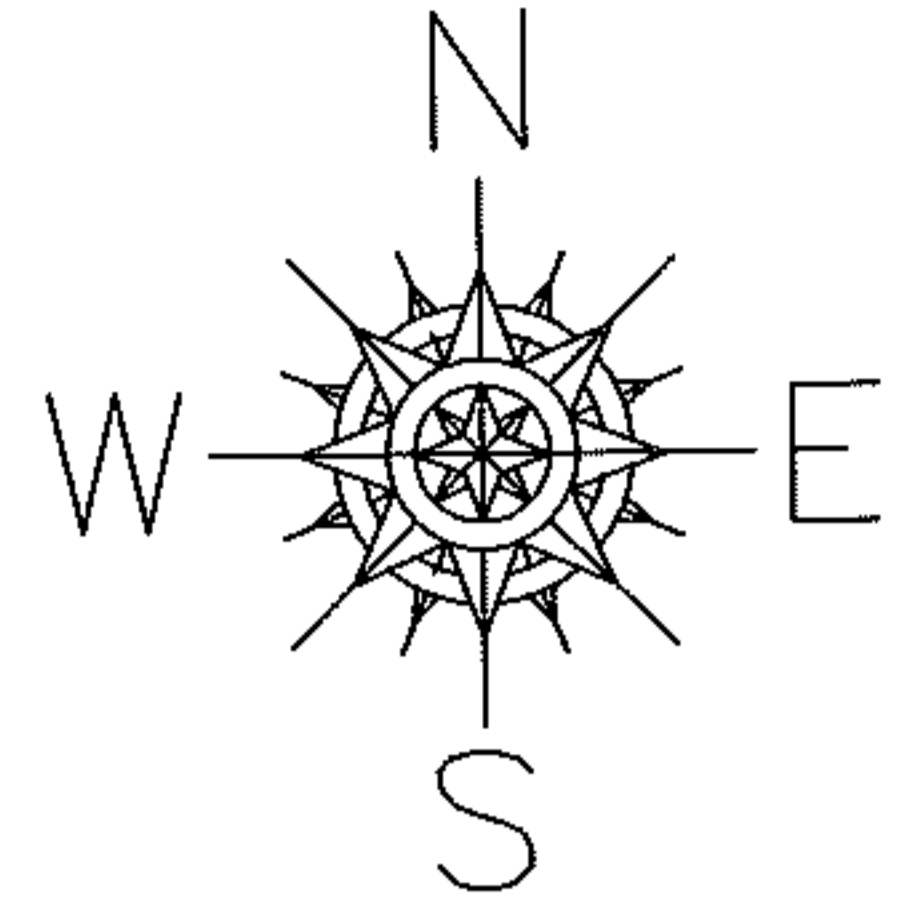
RASTER

PARENT PARCEL: 07-00-009-113-010, -011

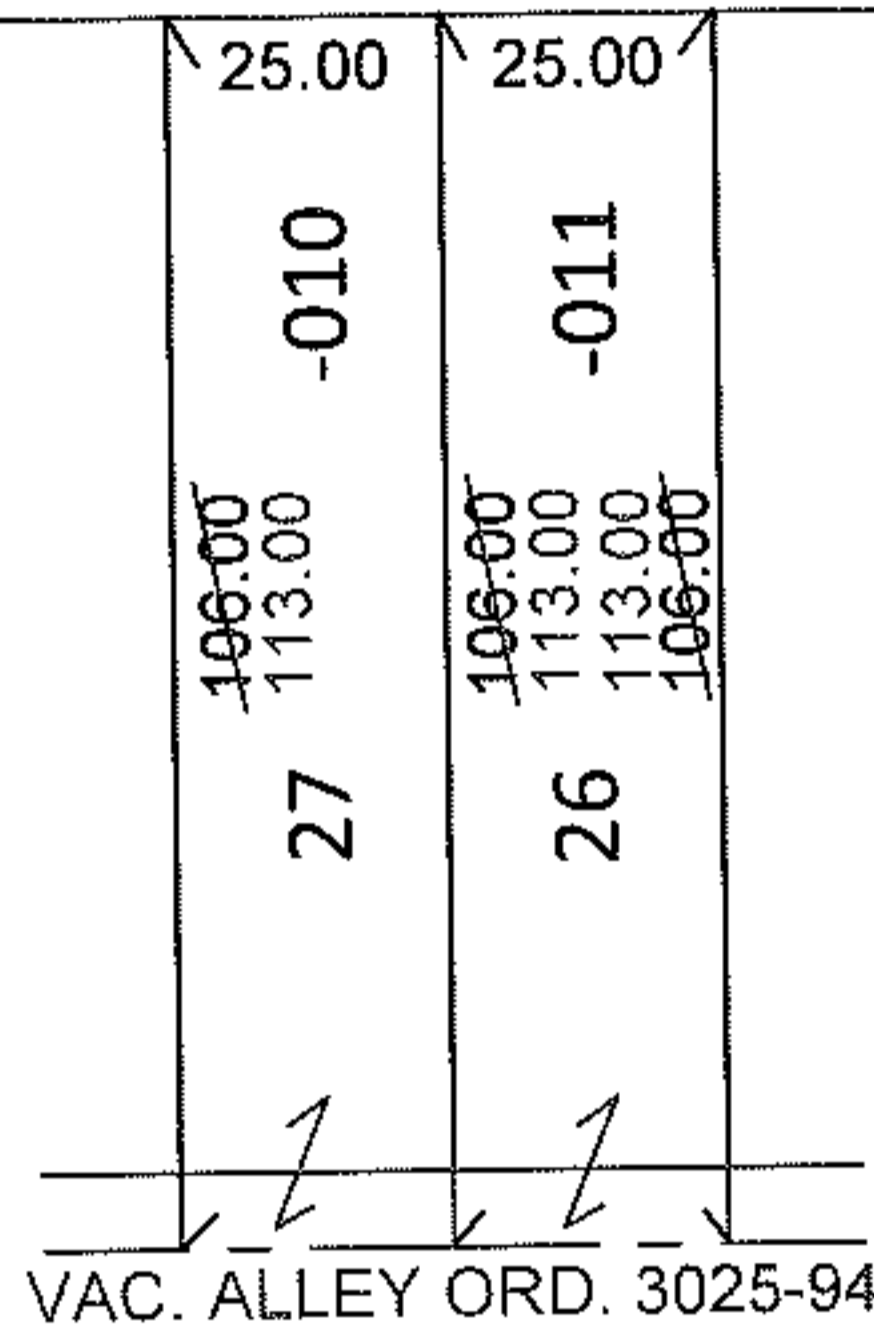
11-02304-C

CHILD PARCEL:

STARTING POINT: S/L'S 26 & 27 IN BLOCK 11 OF RIDGEVILLE HEIGHTS SUB. NO.2(VOL.11 PG.23)



ADAMS AVE.



DEPTH CORRECTION

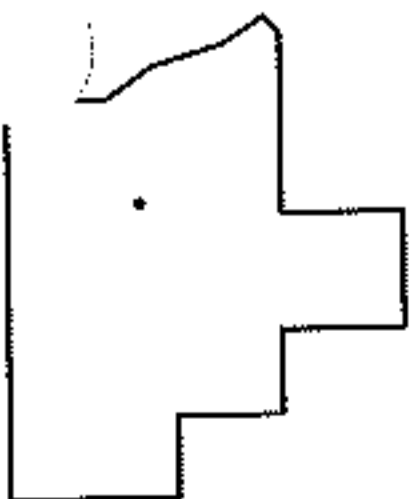
07-00-009-113-010

07-00-009-113-011

113
25 X ~~106~~

113
25 X ~~106~~

PER PRIOR DEEDS AND ORD 3025-94



SPLITS/DEEDS PROCESSED

LORAIN COUNTY TAX MAP DEPARTMENT
226 MIDDLE AVE. ELYRIA, OHIO

SURVEYED BY: N/A

CLOSURE: N/A

MAP PAGE(S): 7-00-009-B

APPROVED BY: RRM DATE: 6-14-11

SCALE: 1"= 50' PRIOR INST.: 20040029617