

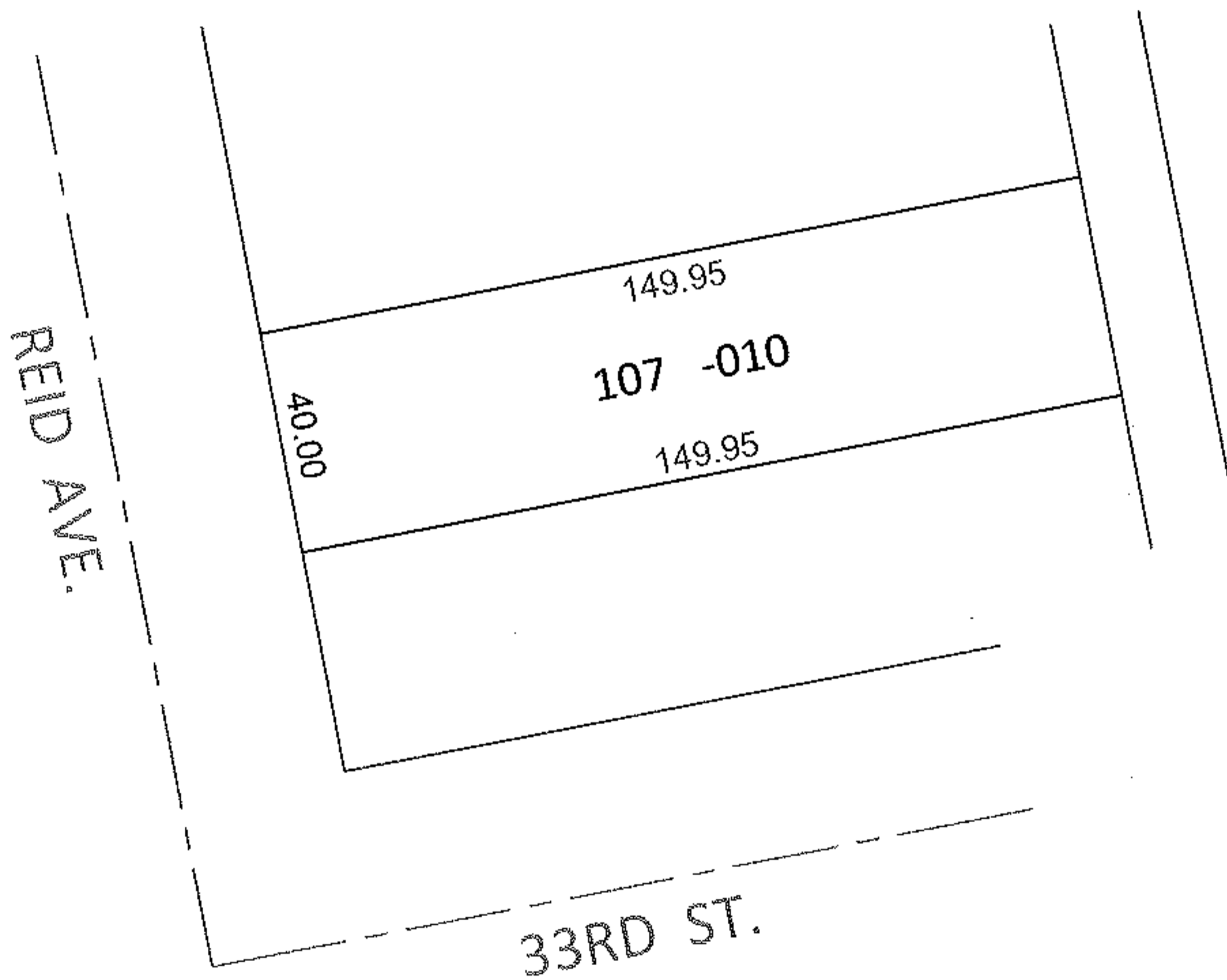
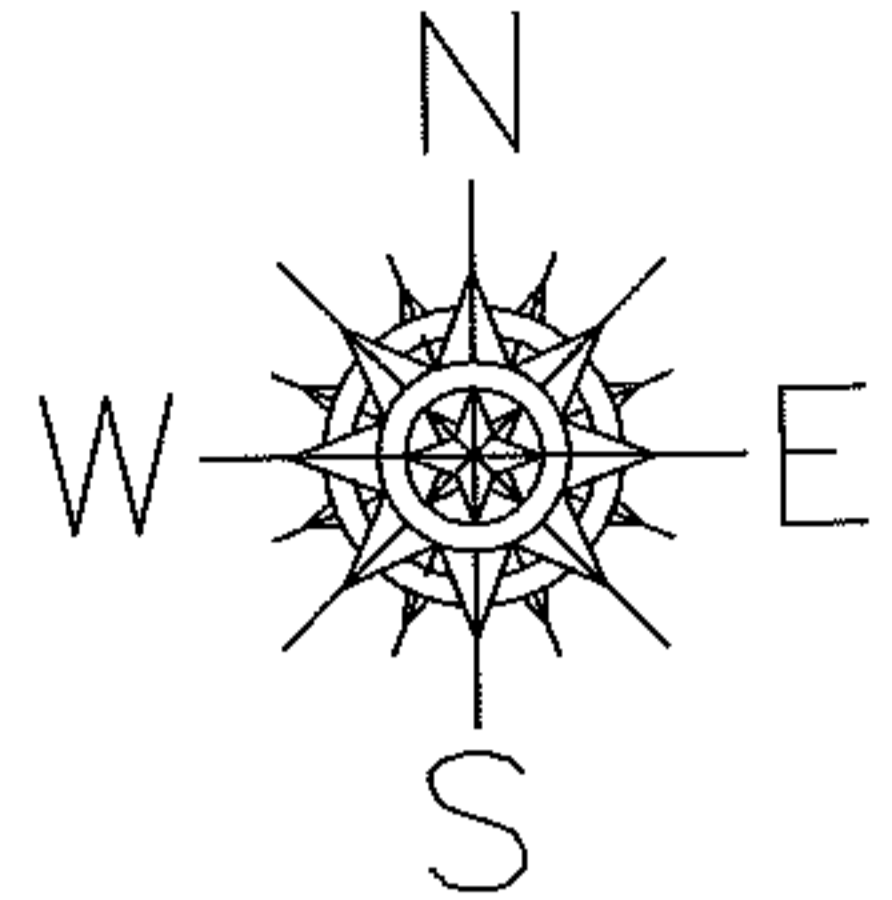
REGISTER

PARENT PARCEL: 02-01-003-220-010

CHILD PARCEL:

STARTING POINT: S/L 107 IN LORAIN STONE CO.'S SUB. NO.2 (VOL.6 PG.38)

11-02301-A

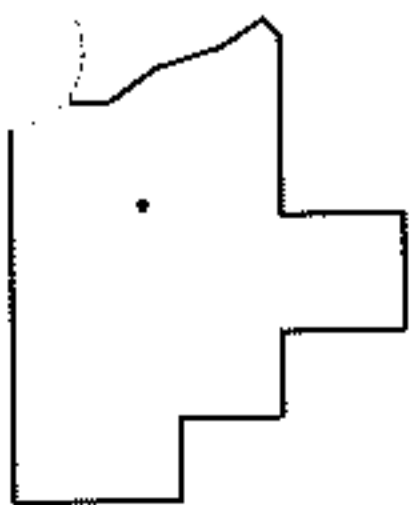


DEPTH CORRECTION

02-01-003-220-010

149.95
40 X ~~150~~

CORR. PER PRIOR DEEDS



SPLITS/DEEDS PROCESSED

LORAIN COUNTY TAX MAP DEPARTMENT
226 MIDDLE AVE. ELYRIA, OHIO

SURVEYED BY: N/A

CLOSURE: N/A

MAP PAGE(S): 2-01-003-J

APPROVED BY: RRM DATE: 9-1-11

SCALE: 1"= 50' PRIOR INST.: 20110365092