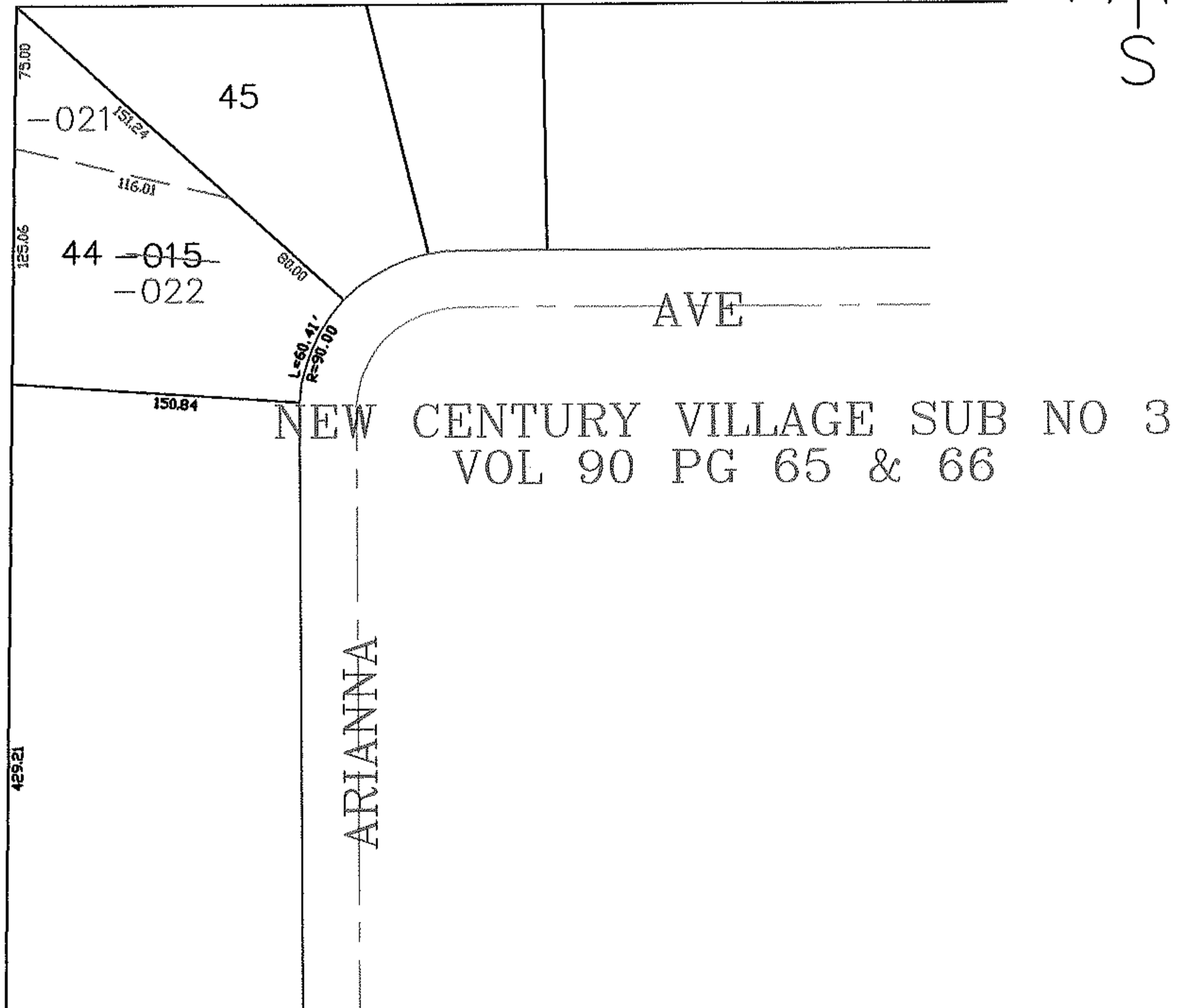
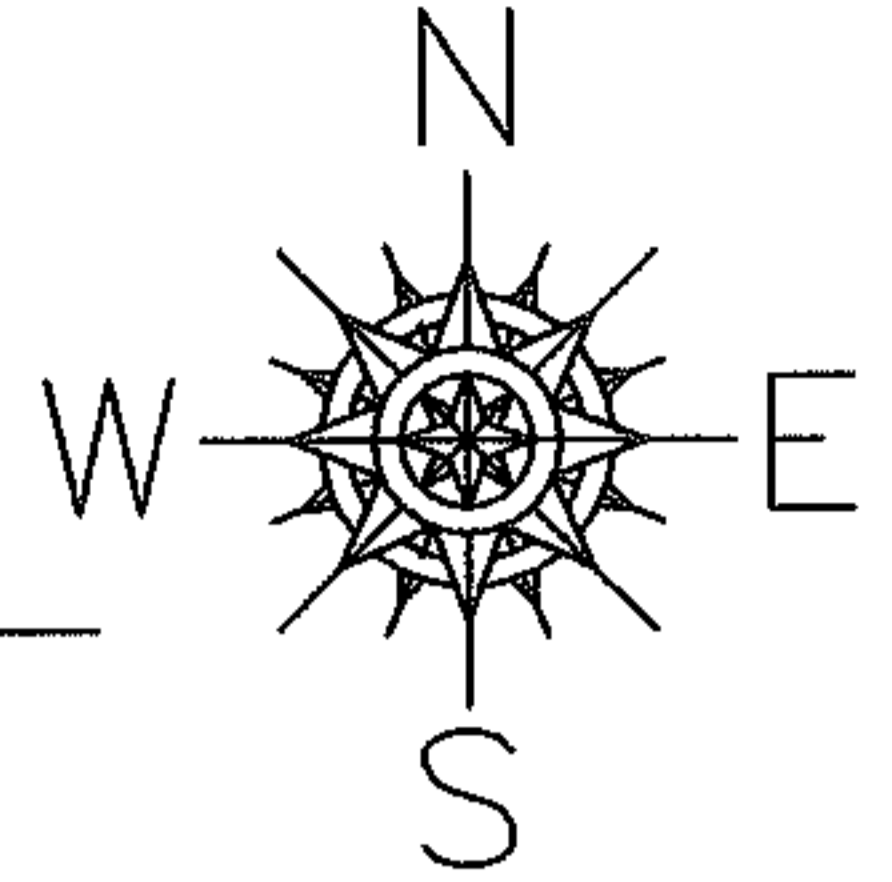


PARENT PARCEL: 02-02-024-108-015

CHILD PARCEL: 02-02-024-108-021, -022

STARTING POINT: NORTHWEST CORNER OF S/L 45 IN NEW CENTURY VILLAGE NO 3

06-02296



SPLITS/DEEDS PROCESSED

LORAIN COUNTY TAX MAP DEPARTMENT
226 MIDDLE AVE. ELYRIA, OHIO

SURVEYED BY: JAMES RESAR

CLOSURE: 0.00 : 10.000

MAP PAGE(S): VOL 90 PG 65

APPROVED BY: JAH DATE: 12-19-06

SCALE: 1" = 100 PRIOR INSTRUMENT: PL VOL 90/65