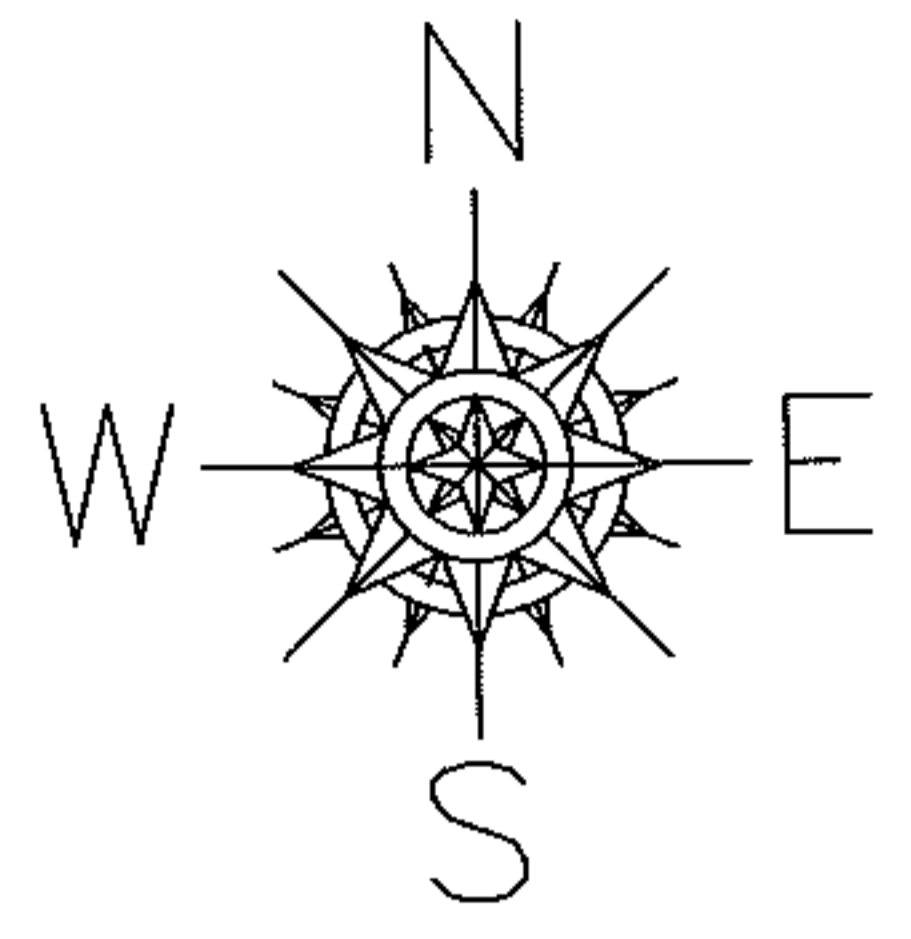


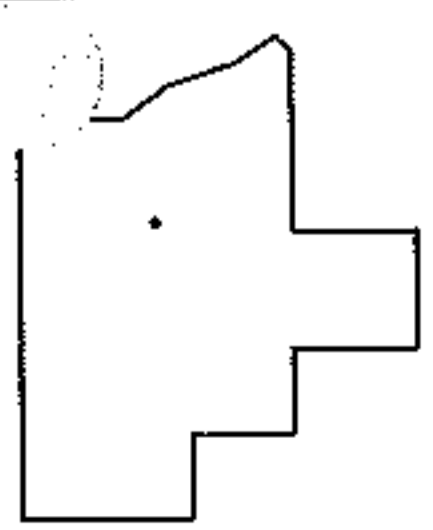
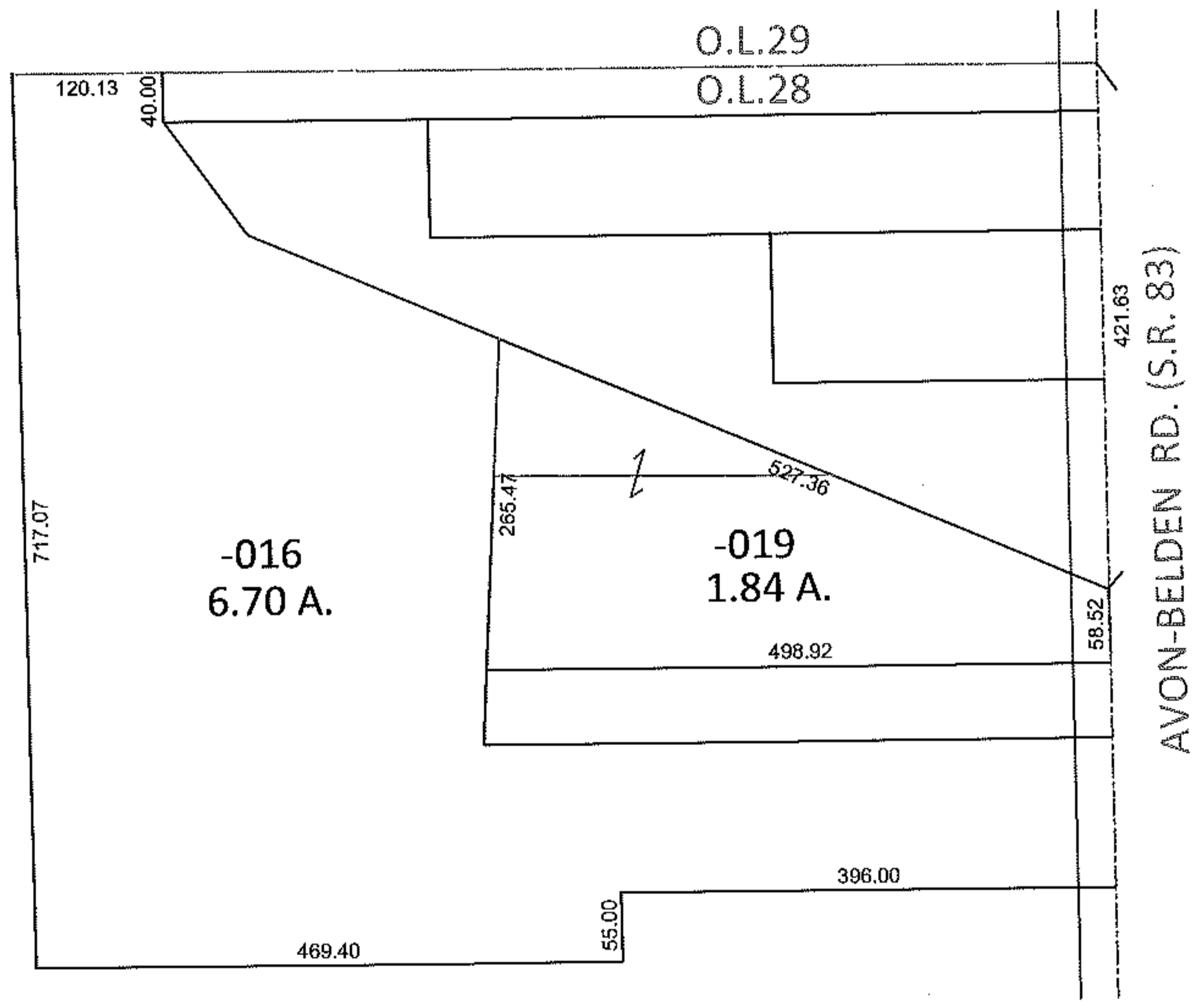
RASTER

PARENT PARCEL: 07-00-028-102-016, -019
CHILD PARCEL: _____
STARTING POINT: C/L OF AVON-BELDEN RD. AT THE NORTHEAST CORNER OF O.L. 28

11-02295-C



MAP CORRECTION ONLY



SPLITS/DEEDS PROCESSED
LORAIN COUNTY TAX MAP DEPARTMENT
226 MIDDLE AVE. ELYRIA, OHIO

SURVEYED BY: N/A
CLOSURE: .01:10,000
MAP PAGE(S): 7-00-028-B
APPROVED BY: RRM DATE: 5-6-11
SCALE: 1"= 200 PRIOR INST.: DV 576/337