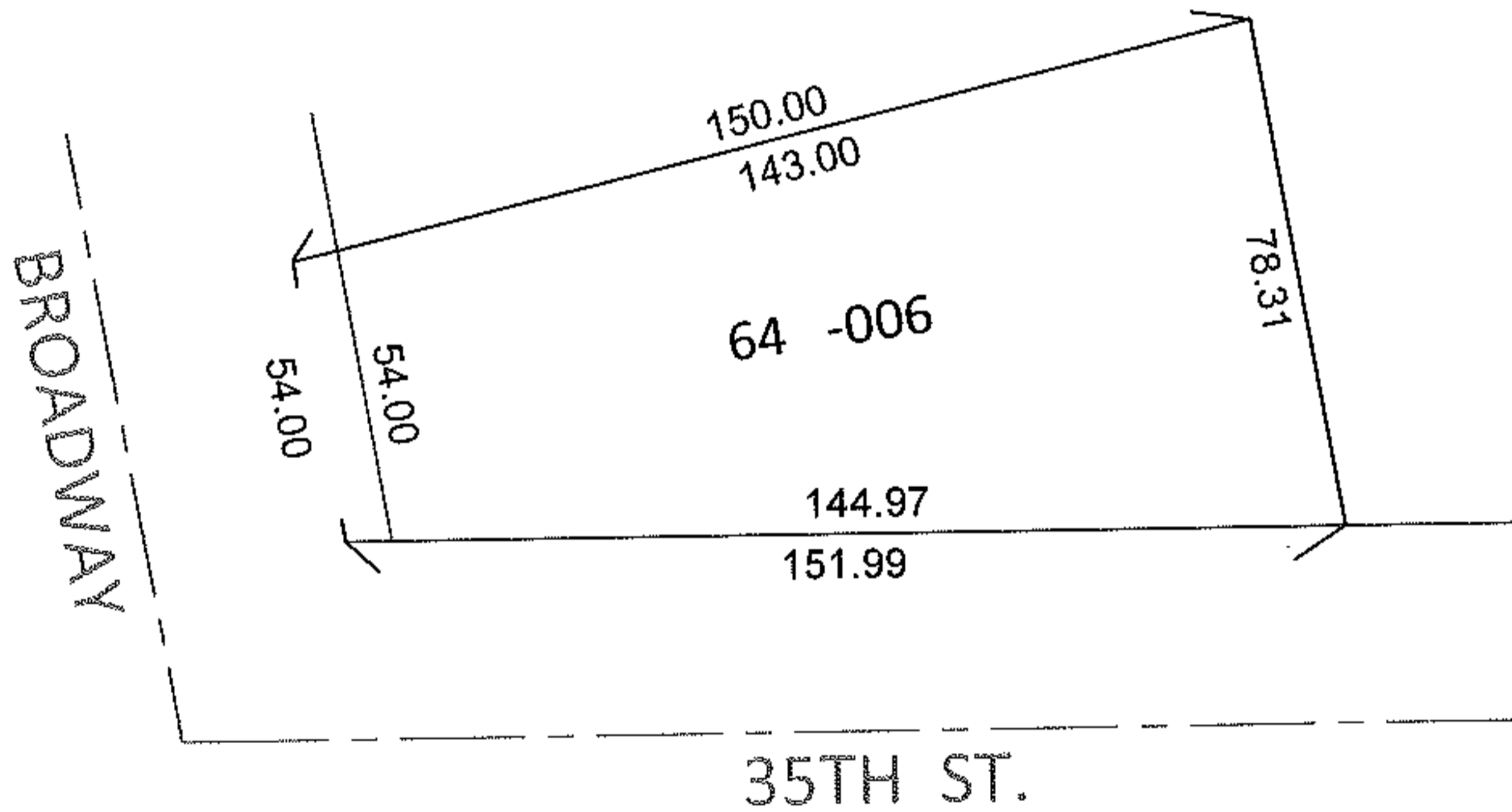
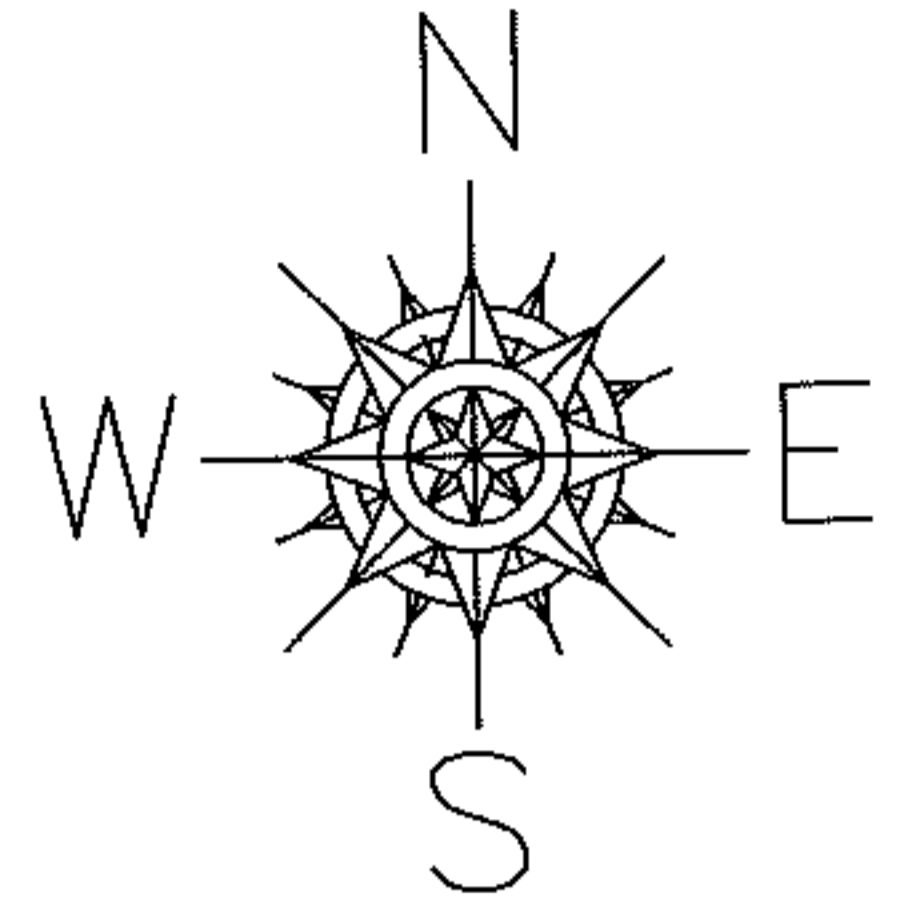


RASTER

PARENT PARCEL: 03-00-098-129-006  
CHILD PARCEL: \_\_\_\_\_  
STARTING POINT: INTERSECTION OF NORTH LINE OF 35TH ST. AND EAST LINE OF BROADWAY

11-02293-C

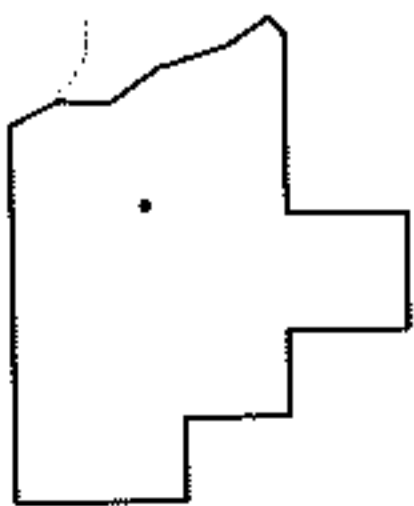


DEPTH CORRECTION

03-00-098-129-006

144.97  
54 X 150

PER PRIOR DEEDS



SPLITS/DEEDS PROCESSED

LORAIN COUNTY TAX MAP DEPARTMENT  
226 MIDDLE AVE. ELYRIA, OHIO

SURVEYED BY: N/A  
CLOSURE: N/A  
MAP PAGE(S): 3-00-098-A  
APPROVED BY: RRM DATE: 6-8-11  
SCALE: 1"= 50' PRIORITY INST.: 20060119954