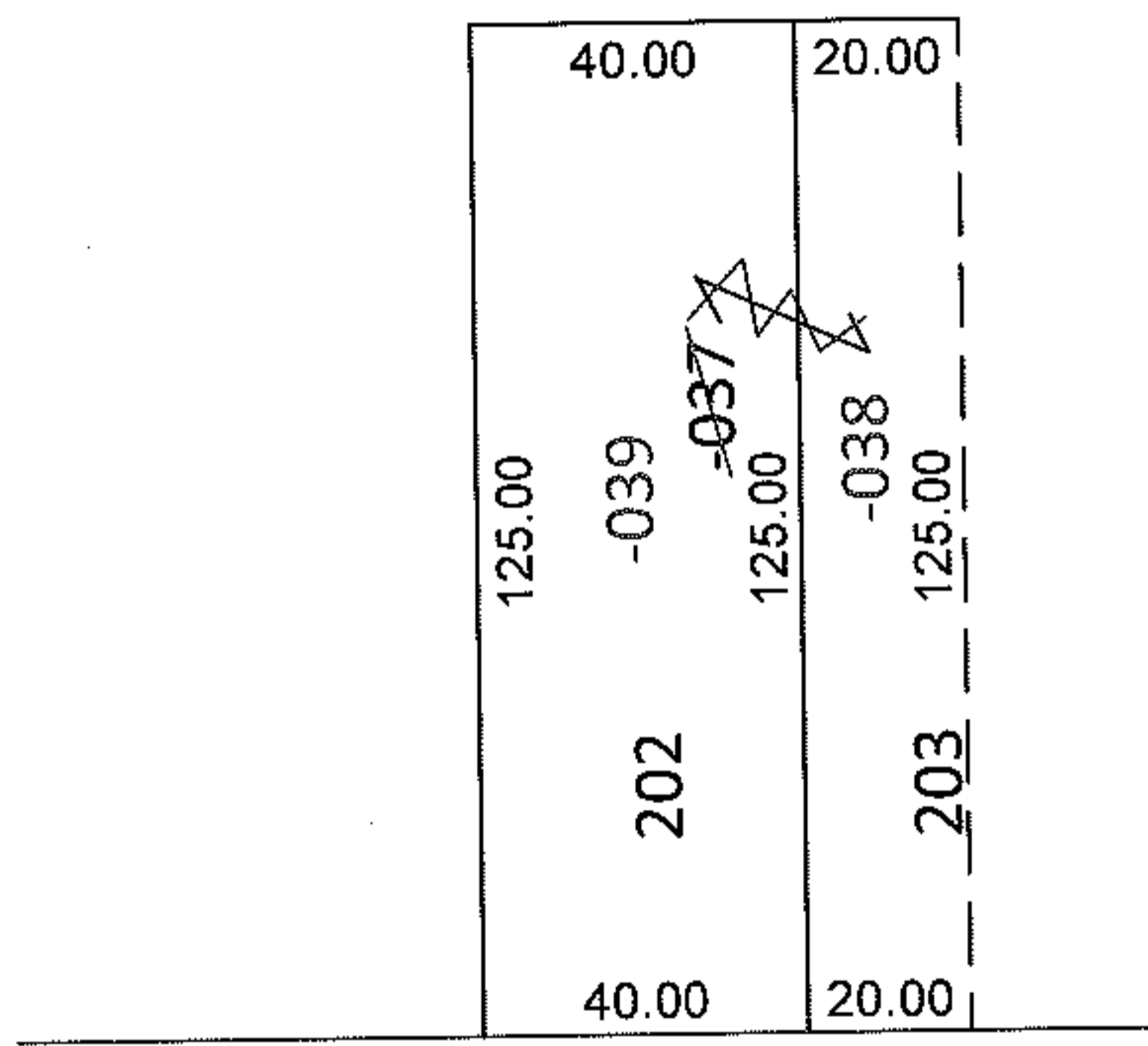
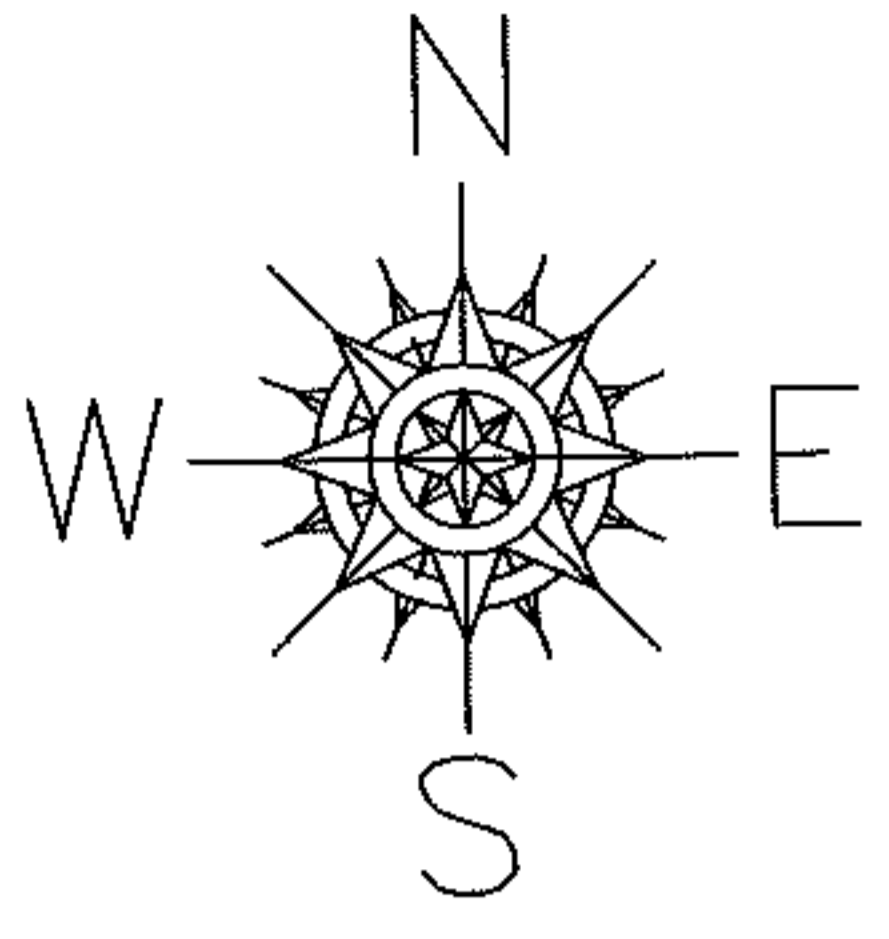


PARENT PARCEL: 06-25-005-105-037
CHILD PARCEL: 06-25-005-105-038, -039
STARTING POINT: S/L'S 202 & 203 IN EASTERN HEIGHTS LAND CO.'S SUB. NO.7(VOL.9 PG.29)

11-02289-U



DENISON AVE.

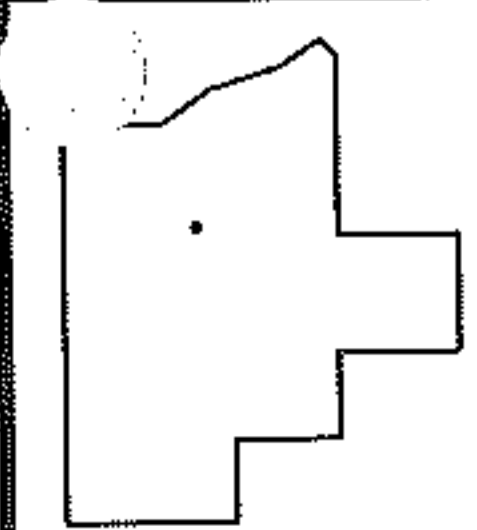
UNCOMBINATION

~~06-25-005-105-037~~
~~60 X 125~~

06-25-005-105-038
20 X 125

06-25-005-105-039
40 X 125

PER PRIOR DEEDS



SPLITS/DEEDS PROCESSED
LORAIN COUNTY TAX MAP DEPARTMENT
226 MIDDLE AVE. ELYRIA, OHIO

SURVEYED BY: N/A
CLOSURE: N/A
MAP PAGE(S): 6-121
APPROVED BY: RRM DATE: 4-21-11
SCALE: 1"= 50' PRIOR INST.: 20100343260