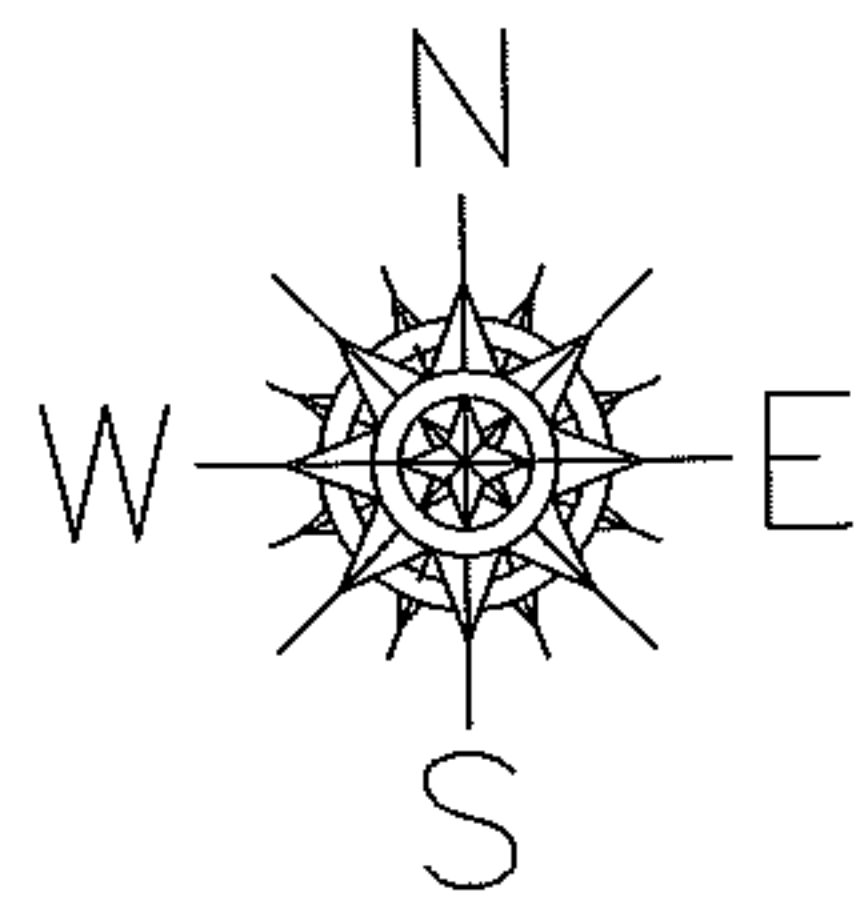
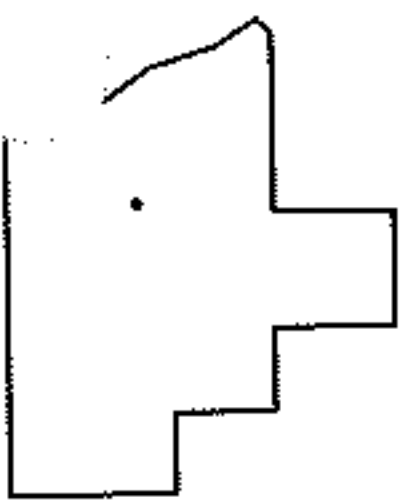
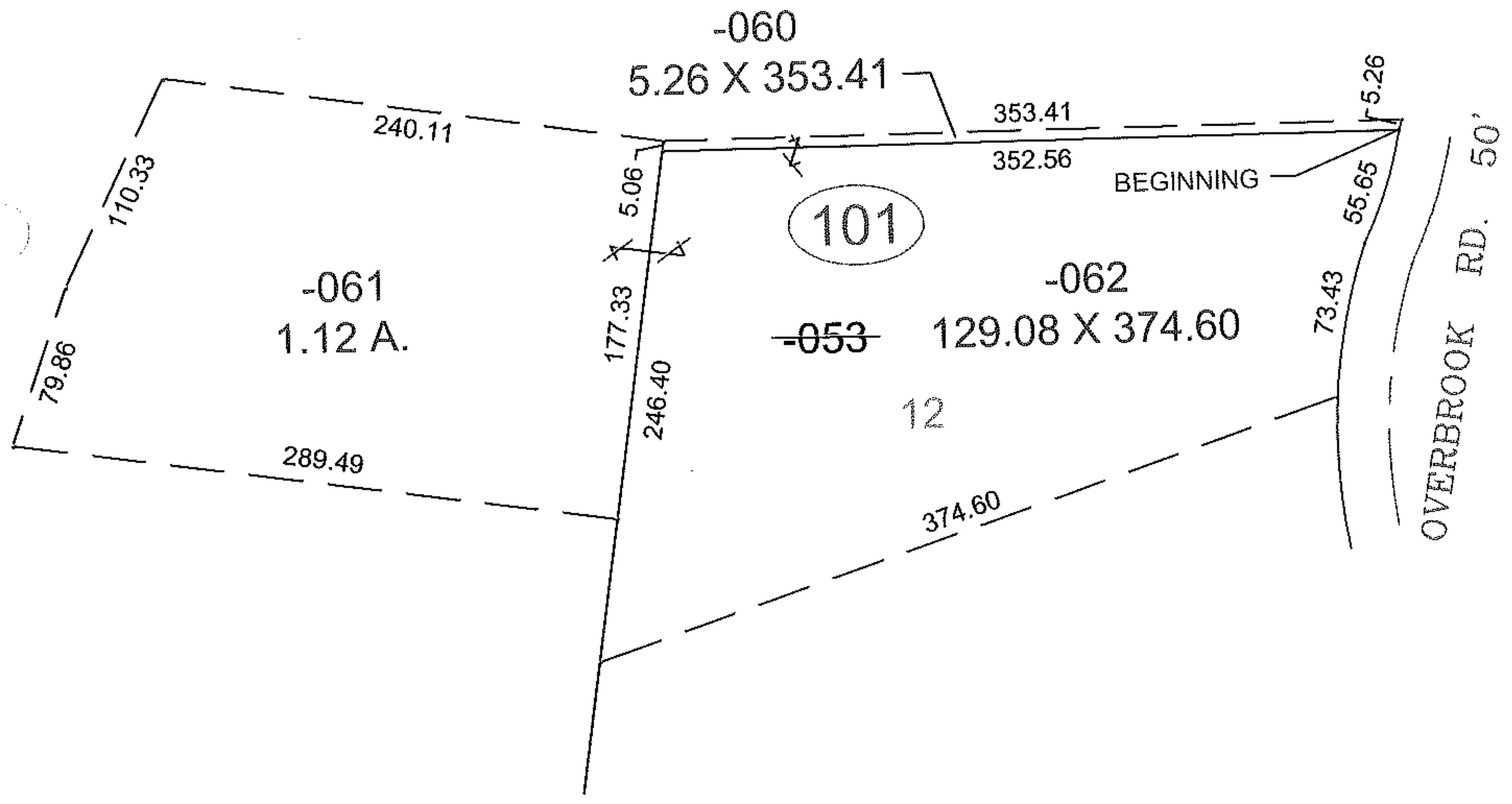


PARENT PARCEL: 06-25-162-101-053  
CHILD PARCEL: 06-25-162-101-060 THRU -062  
STARTING POINT: N.E. CORNER OF S/L 12 IN GULF FARM ALLOTMENT V. 10 PG. 24

11-02285-U



UNCOMBINATION  
PER DEED INST.# 20050119470



SPLITS/DEEDS PROCESSED  
LORAIN COUNTY TAX MAP DEPARTMENT  
226 MIDDLE AVE. ELYRIA, OHIO

SURVEYED BY: NONE  
CLOSURE: 0.01 : 10,000  
MAP PAGE(S): 6-66  
APPROVED BY: TJS DATE: 4/18/11  
SCALE: 1"= 100 PRIOR INST.: 20050119470