

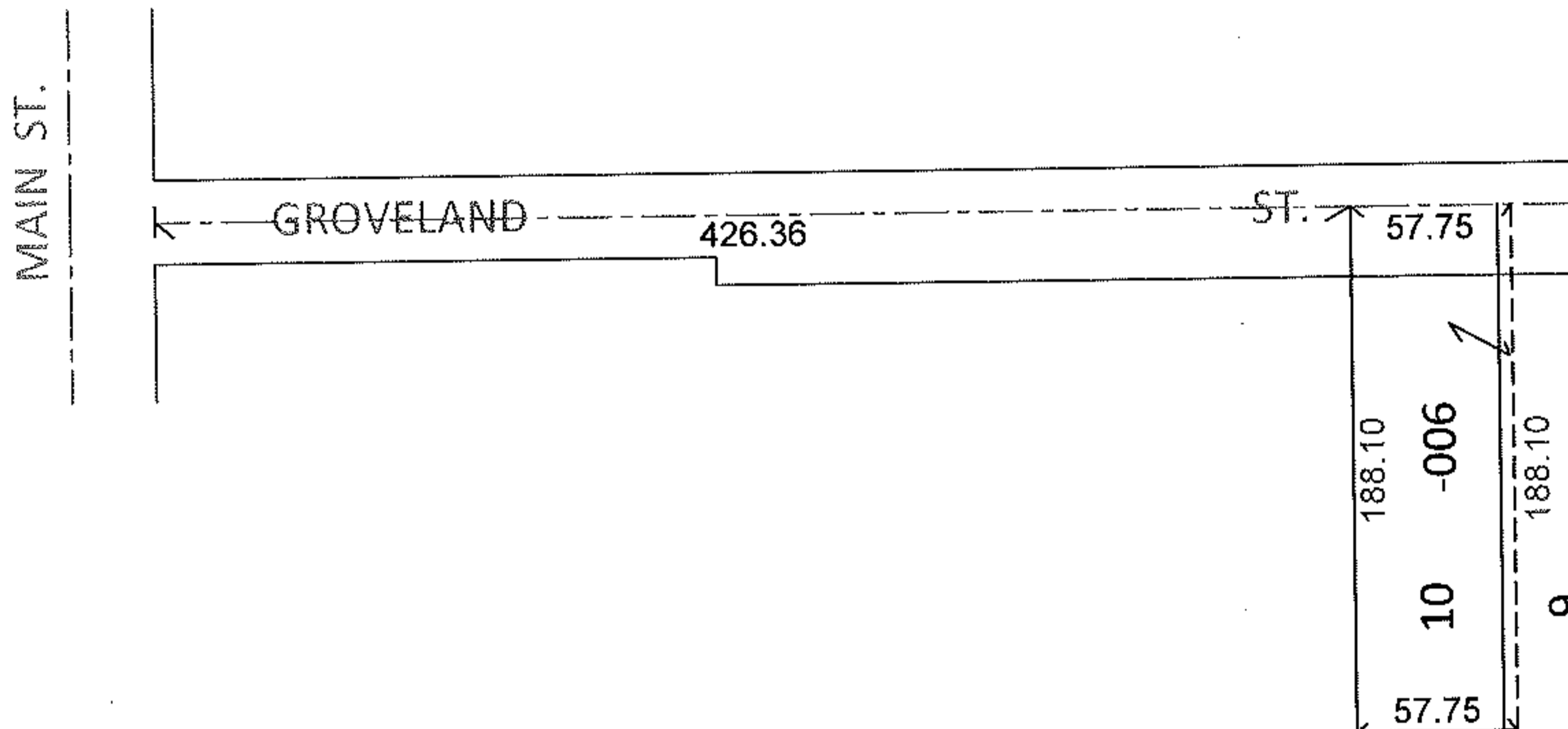
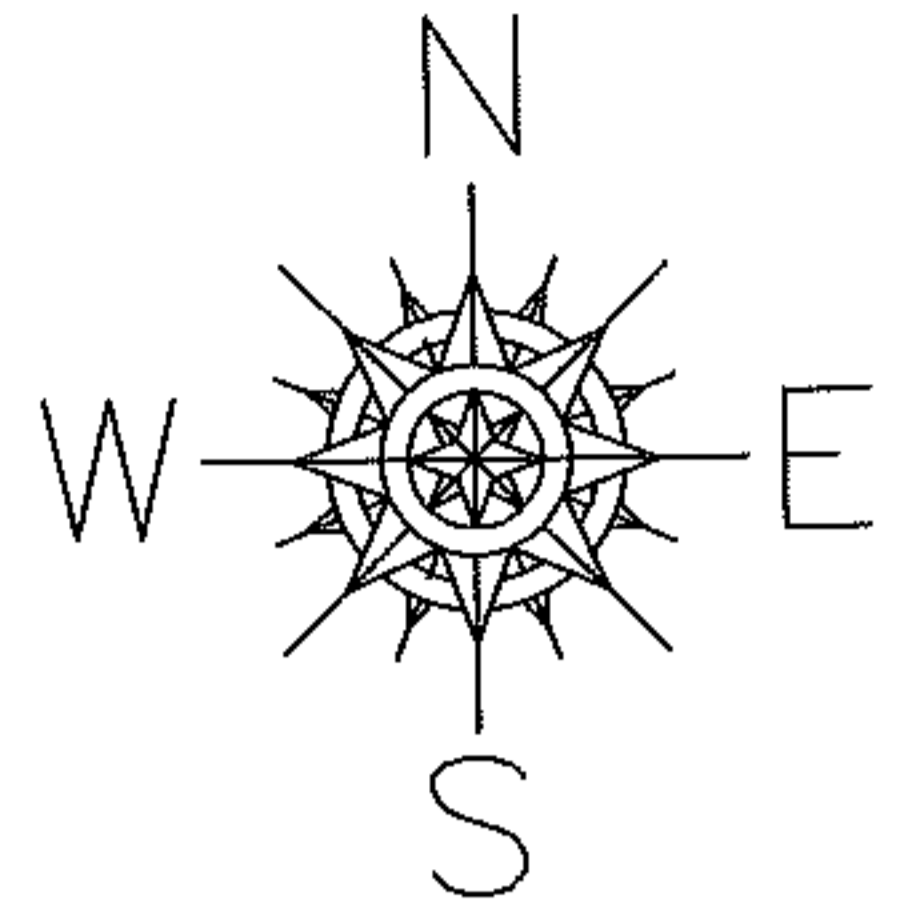
RASTER

PARENT PARCEL: 09-00-086-104-006

11-02282-C

CHILD PARCEL:

STARTING POINT: INTERSECTION OF C/L OF GROVELAND ST. AND EAST LINE OF MAIN ST.



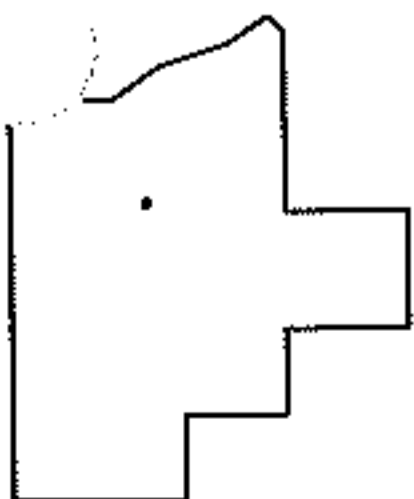
ACREAGE TO FRONTAGE AND DEPTH CORRECTION

09-00-086-104-006

57.75 X 188.10

~~0.20 A.~~

PER PRIOR DEEDS



SPLITS/DEEDS PROCESSED

LORAIN COUNTY TAX MAP DEPARTMENT
226 MIDDLE AVE. ELYRIA, OHIO

SURVEYED BY: N/A

CLOSURE: N/A

MAP PAGE(S): 9-00-086-A

APPROVED BY: RRM DATE: 5-24-11

SCALE: 1"= 100 PRIOR INST.: 20040005089