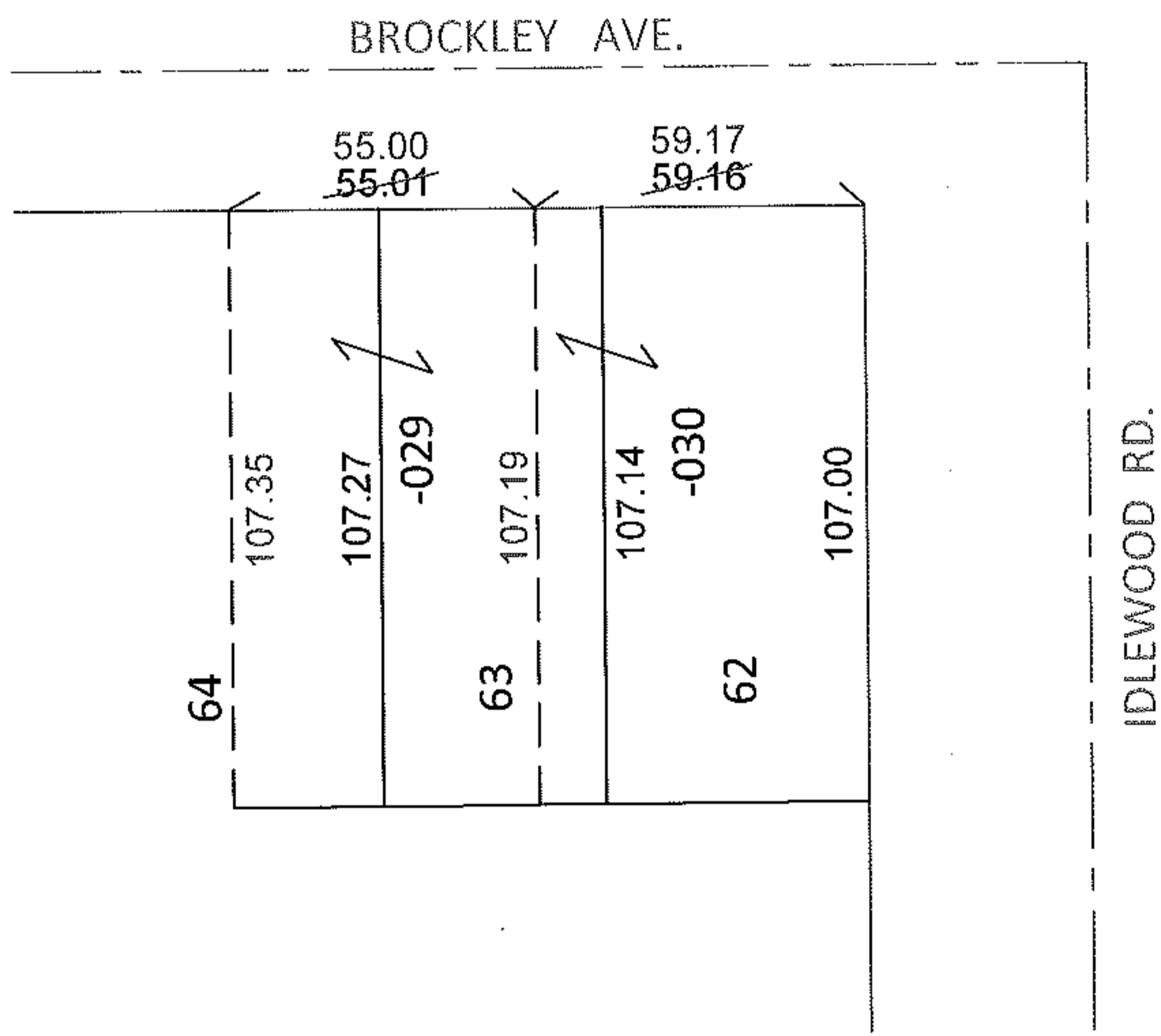
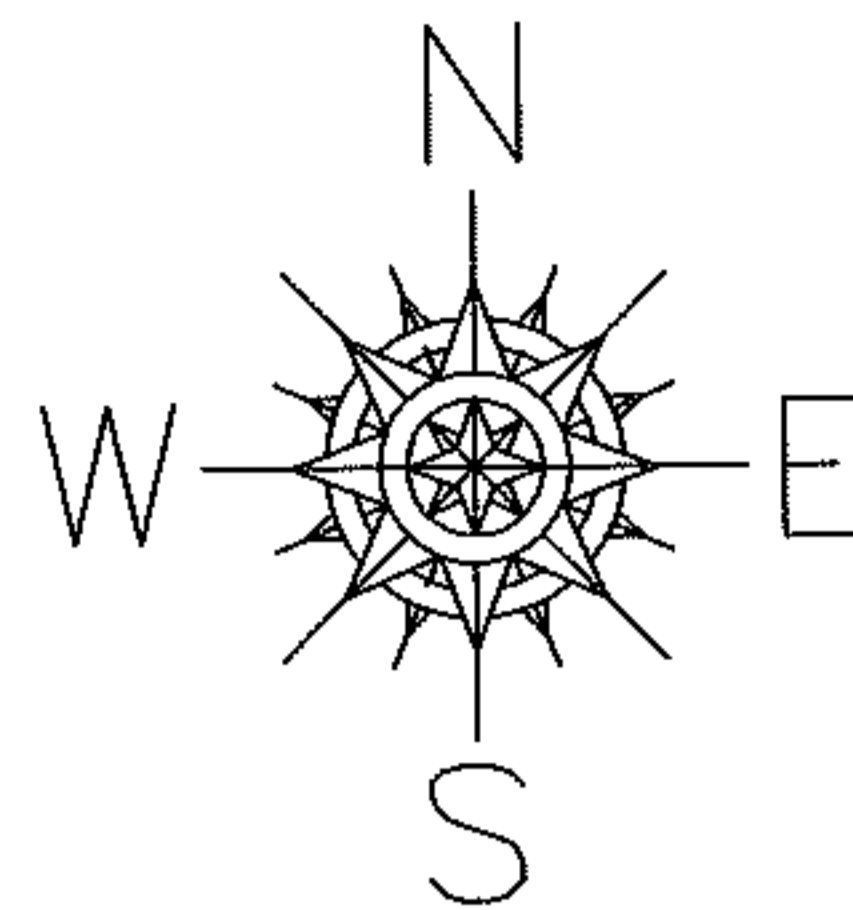


PARENT PARCEL: 03-00-029-106-029, -030

CHILD PARCEL: _____

STARTING POINT: S/L'S 62-64 IN KNICKERBOCKER SUB. NO.2 (VOL.12 PG.16)

11-02276-C



FRONTAGE AND DEPTH CORRECTION

03-00-029-106-029

03-00-029-106-030

55.00 X 107.35

59.17 X 107.19

~~55.01 X 107~~

~~59.16 X 107~~

CORR. PER PRIOR DEEDS AND SURVEY BY TKACH AND WUNDERLICH

*20100330968

*20050104823

SPLITS/DEEDS PROCESSED

LORAIN COUNTY TAX MAP DEPARTMENT
226 MIDDLE AVE. ELYRIA, OHIO

SURVEYED BY: TKACH AND WUNDERLICH

CLOSURE: N/A

MAP PAGE(S): 3-00-029-B

APPROVED BY: RRM DATE: 4-4-11

SCALE: 1" = 50' PRIOR INST.: *SEE ABOVE