

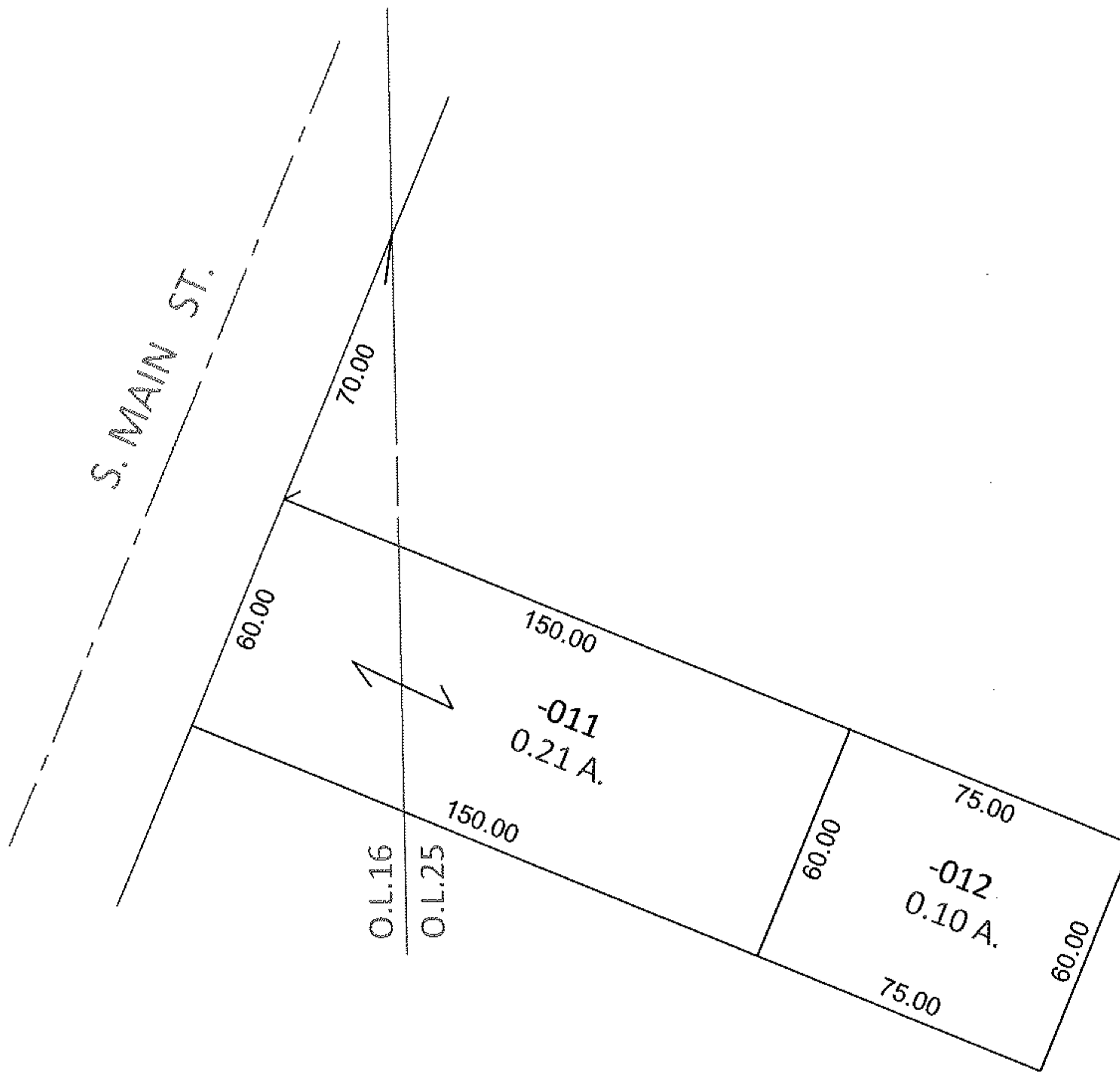
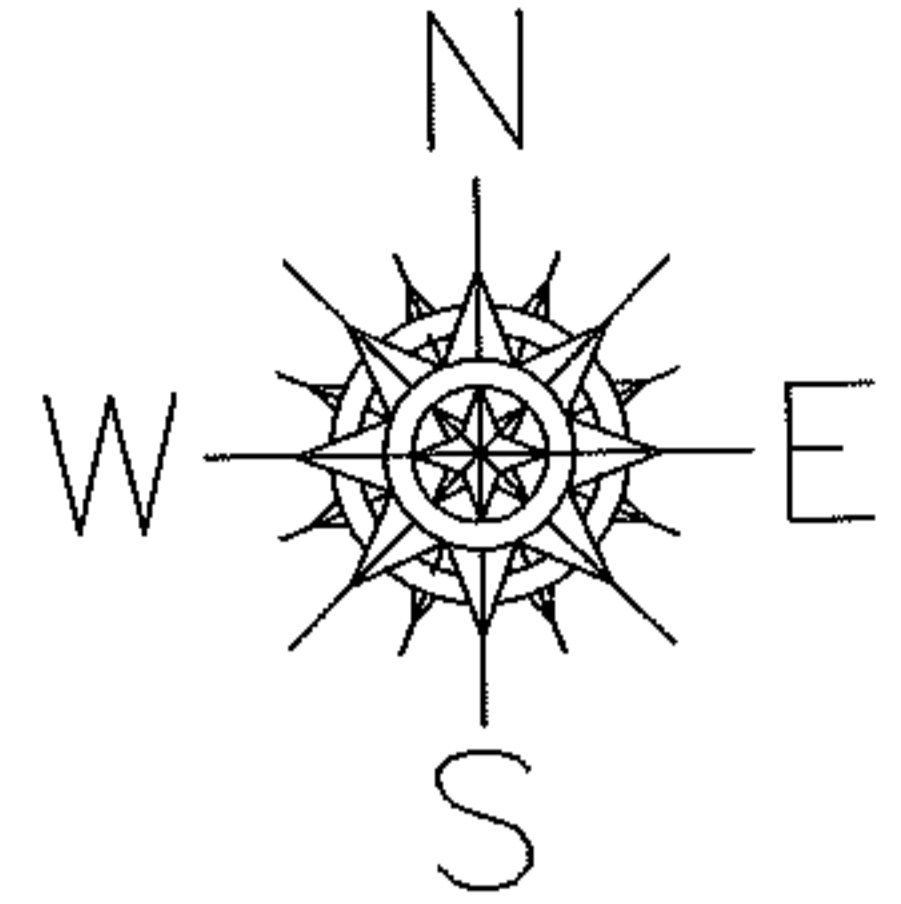
RASTER

PARENT PARCEL: 05-00-025-101-011, -012

11-02274-C

CHILD PARCEL:

STARTING POINT: INTERSECTION OF EAST LINE OF S. MAIN ST. AND O.L. LINE BETWEEN O.L.'S 16 & 25



FRONTAGE AND DEPTH TO ACERAGE CORRECTION

05-00-025-101-011

05-00-025-101-012

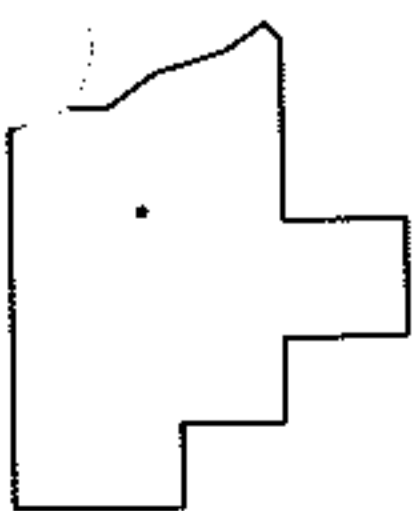
0.21 A.

0.10 A.

~~60 X 150~~

~~60 X 75~~

PER PRIOR DEEDS AND SURV. BY C.T. BIGGS



SPLITS/DEEDS PROCESSED

LORAIN COUNTY TAX MAP DEPARTMENT
226 MIDDLE AVE. ELYRIA, OHIO

SURVEYED BY: C.T. BIGGS

CLOSURE: .00:10,000

MAP PAGE(S): 5-00-025-A

APPROVED BY: RRM DATE: 5-19-11

SCALE: 1"= 50' PRIOR INST.: 20050057940