

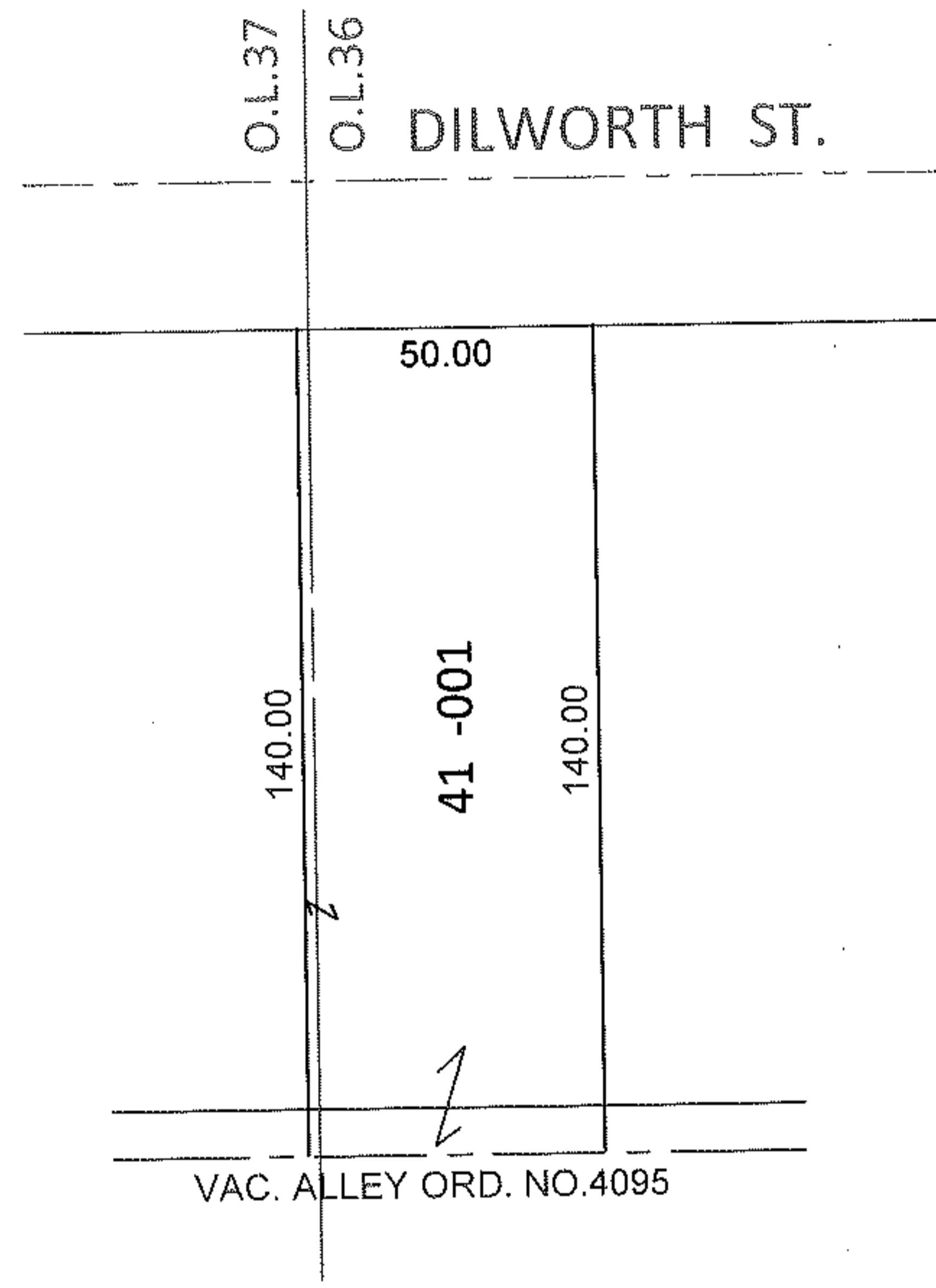
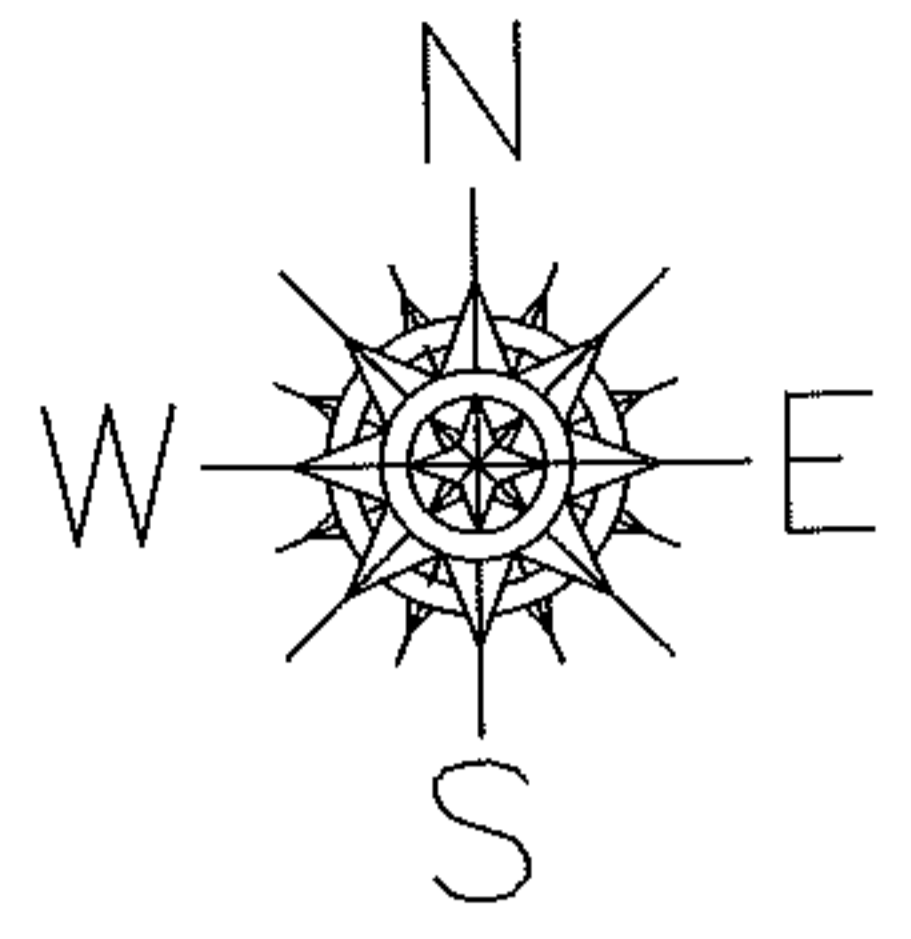
RASTER

PARENT PARCEL: 06-25-036-103-001

11-02273-C

CHILD PARCEL:

STARTING POINT: S/L 41 IN DILWORTH'S EAST ELYRIA SUB.(VOL.6 PG.32)

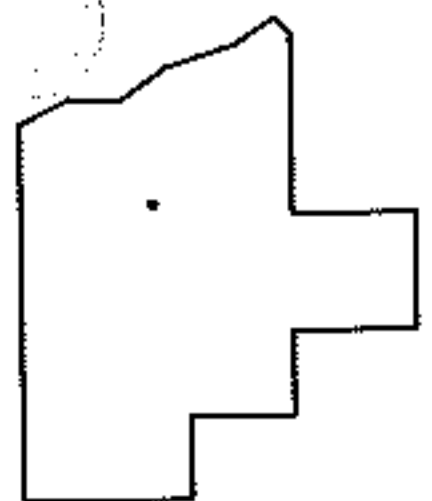


DEPTH CORRECTION

06-25-036-103-001

140
50 X ~~132~~

PER DEEDS & VAC. ORD. 4095



SPLITS/DEEDS PROCESSED

LORAIN COUNTY TAX MAP DEPARTMENT
226 MIDDLE AVE. ELYRIA, OHIO

SURVEYED BY: N/A
 CLOSURE: N/A
 MAP PAGE(S): 6-86
 APPROVED BY: RRM DATE: 11-8-11
 SCALE: 1"= 50' PRIOR INST.: 20080240377