

PARENT PARCEL: 06-25-038-107-007

CHILD PARCEL: XX-XX-XXX-XXX-XXX

STARTING POINT: XXXXXX

11-02269-C

### FRONTAGE & DEPTH CORRECTION

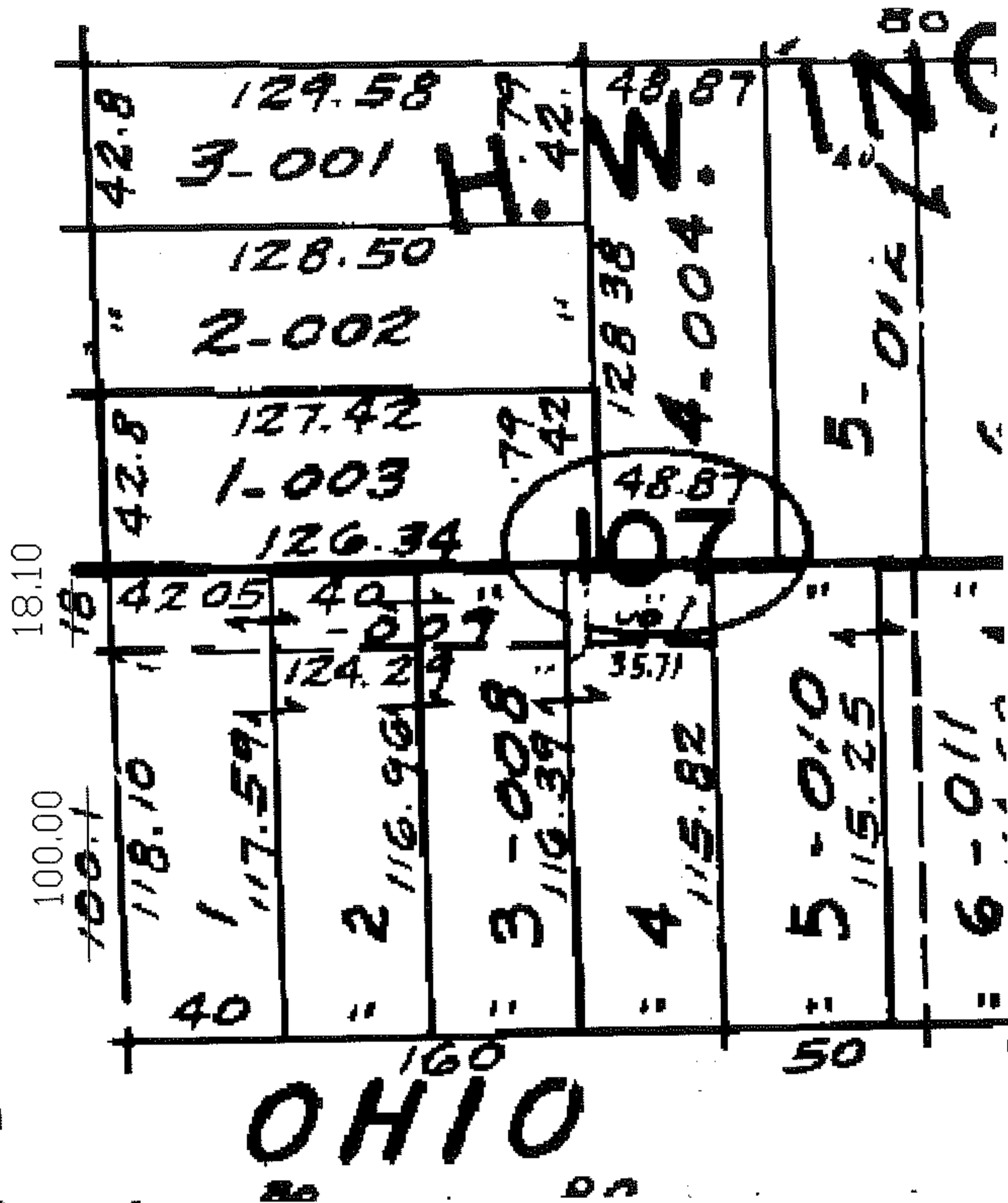
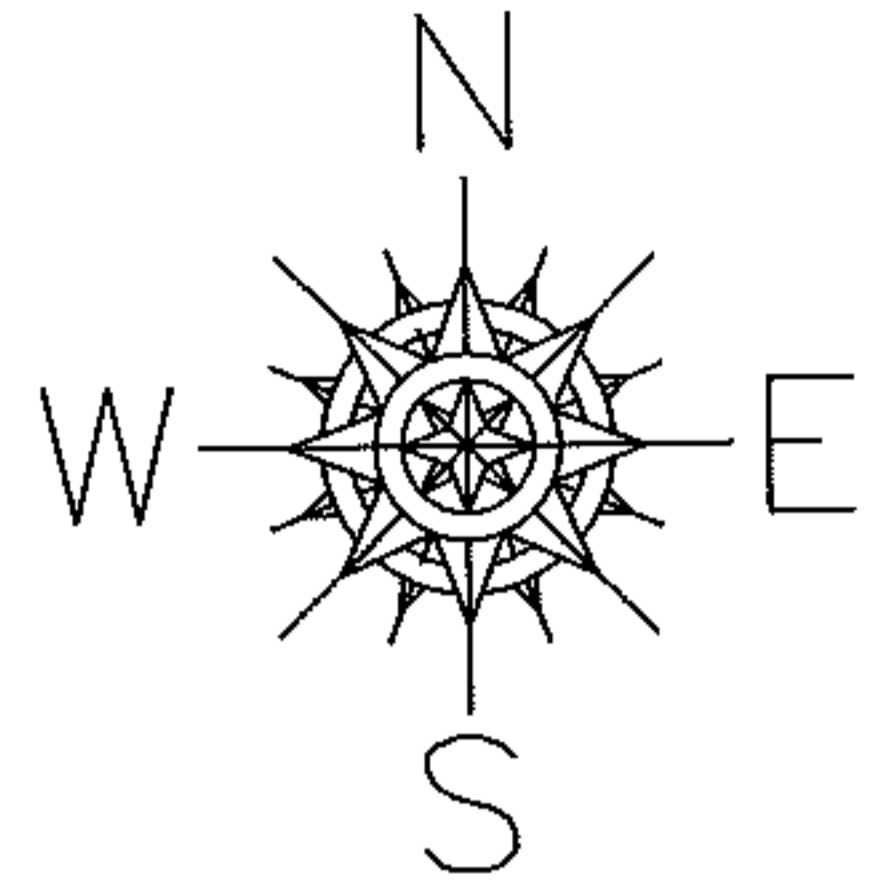
06-25-038-107-007

~~18 X 124.29~~

18.10 X 124.29

PER INST. #20030892253

& DV 638/447



# OHIO

### SPLITS/DEEDS PROCESSED

LORAIN COUNTY TAX MAP DEPARTMENT  
226 MIDDLE AVE. ELYRIA, OHIO

SURVEYED BY: NONE

CLOSURE: NONE

MAP PAGE(S): 6-104

APPROVED BY: TJS DATE: 3/24/11

SCALE: 1"= 50' PRIOR INST.: OR 109/40