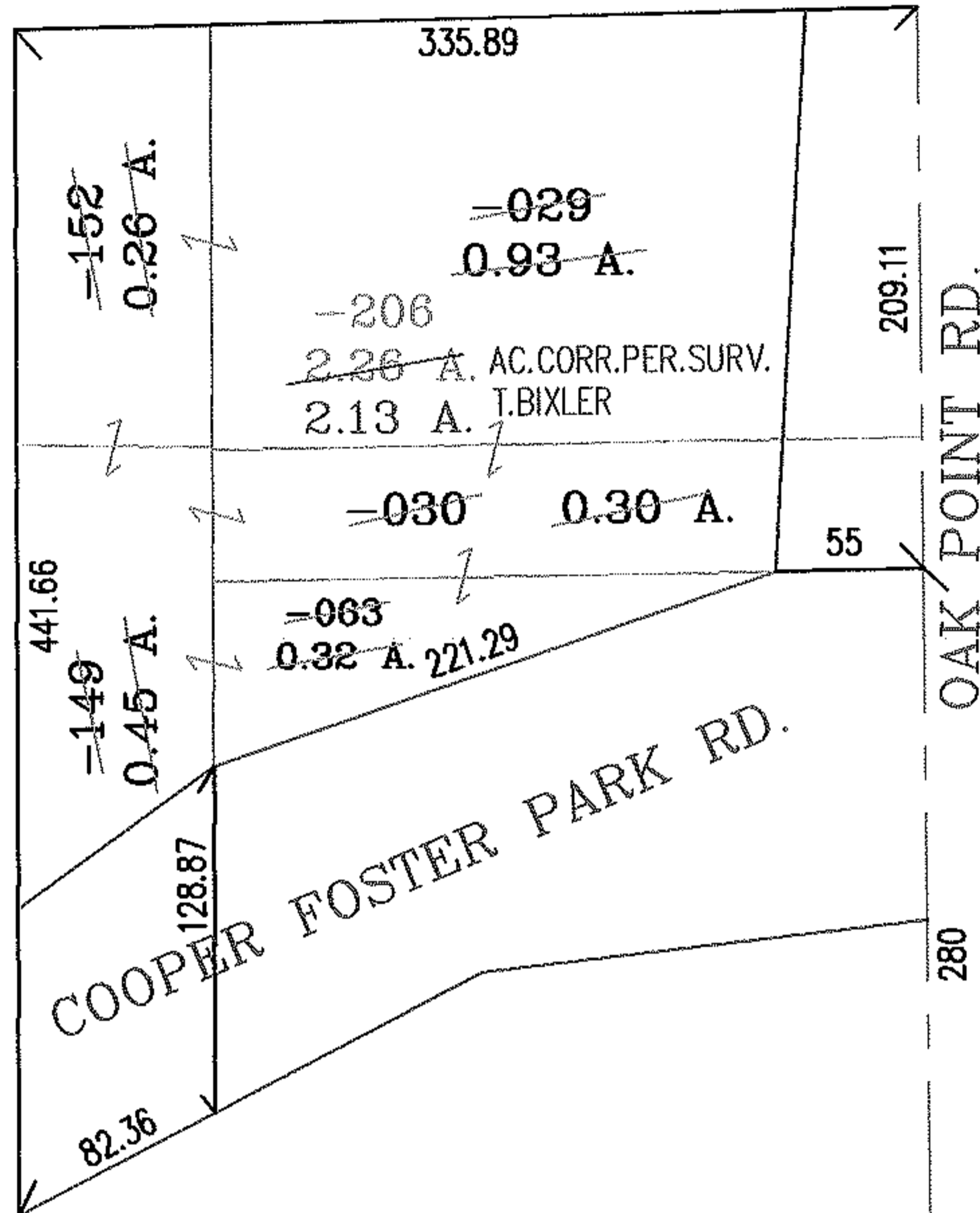
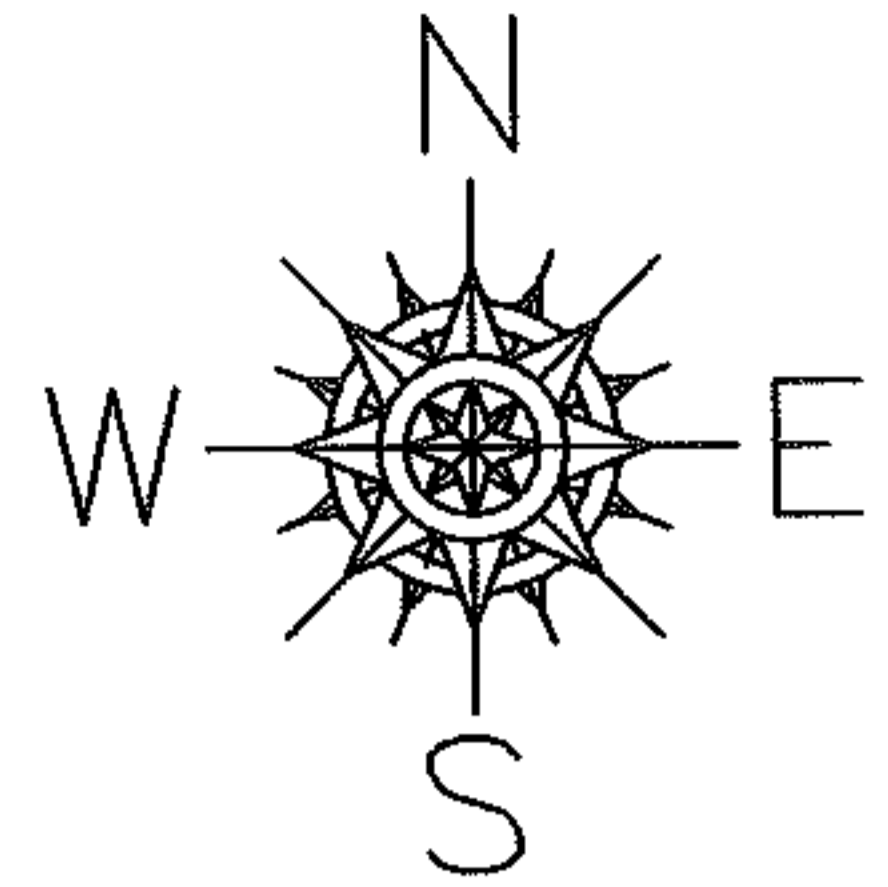


PARENT PARCEL: 05-00-001-000-029,-030,-063,-149,-152

CHILD PARCEL: 05-00-001-000-206

STARTING POINT: SOUTHEAST CORNER OF O.L.1

06-02265



O.L.1	O.L.20
O.L.2	O.L.19

* 20000694113
20050077869

SPLITS/DEEDS PROCESSED

LORAIN COUNTY TAX MAP DEPARTMENT
226 MIDDLE AVE. ELYRIA, OHIO

SURVEYED BY: TREVOR A. BIXLER
 CLOSURE: .01:10.000
 MAP PAGE(S): 05-00-001-B
 APPROVED BY: RRM DATE: 11-9-06
 SCALE: 1" = 100 PRIOR INSTRUMENT: SEE ABOVE *