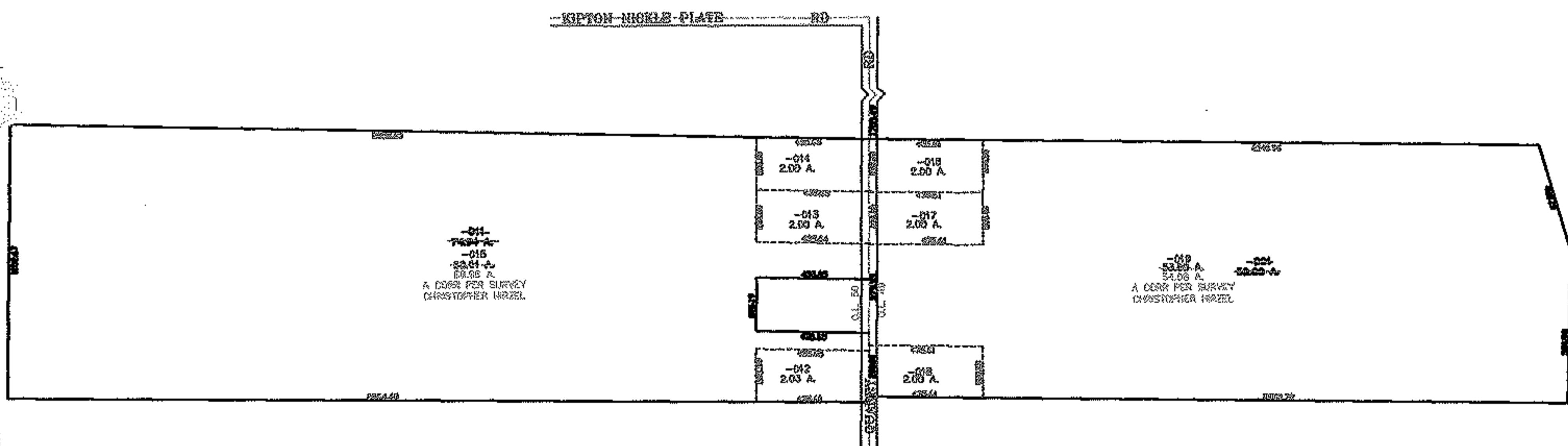
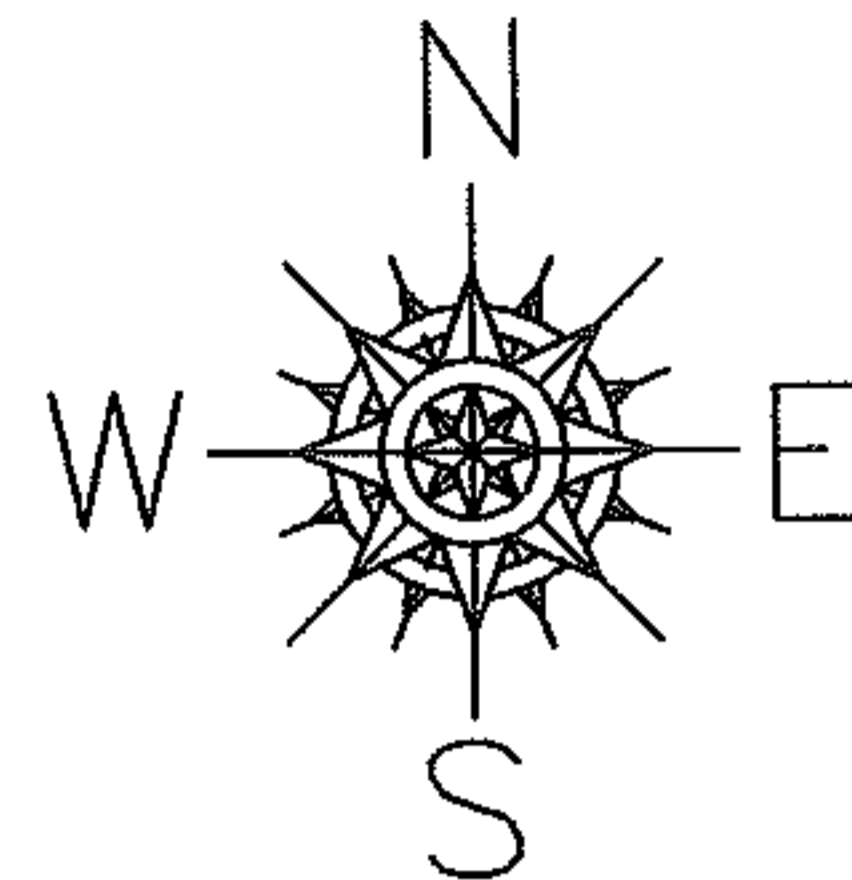


PARENT PARCEL: 14-00-049-000-001, 14-00-050-000-011

CHILD PARCEL: 14-00-049-000-016 THRU -019 14-00-050-000-012 THRU -015

STARTING POINT: CENTERLINE OF KIPTON NICKEL PLATE RD & QUARRY RD

06-02259



SPLITS/DEEDS PROCESSED

LORAIN COUNTY TAX MAP DEPARTMENT
226 MIDDLE AVE. ELYRIA, OHIO

SURVEYED BY: CHRISTOPHER HIRZEL

CLOSURE: 0.00 : 10.000

MAP PAGE(S): 14-00-049-A, 14-00-050-B

APPROVED BY: JAH DATE: 11-8-06

SCALE: 1" = 800 PRIOR INSTRUMENT: 2004004217