

RASSER

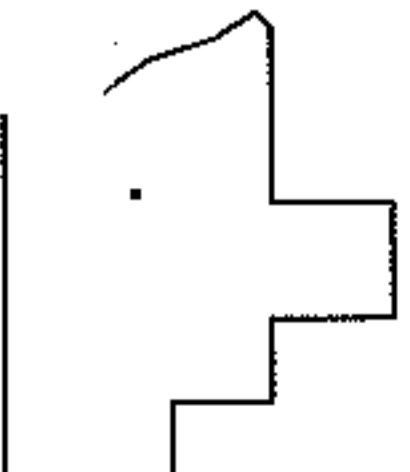
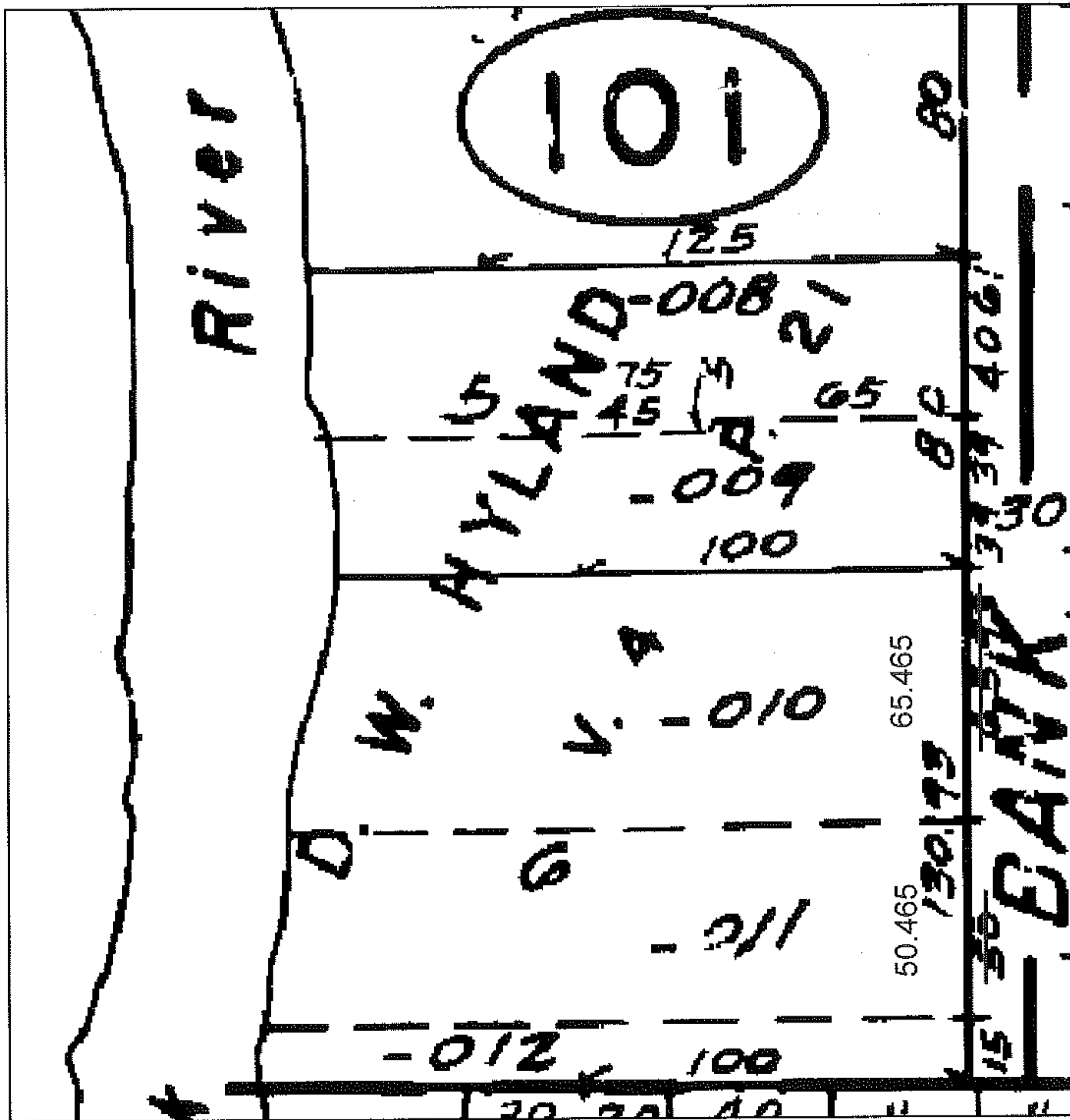
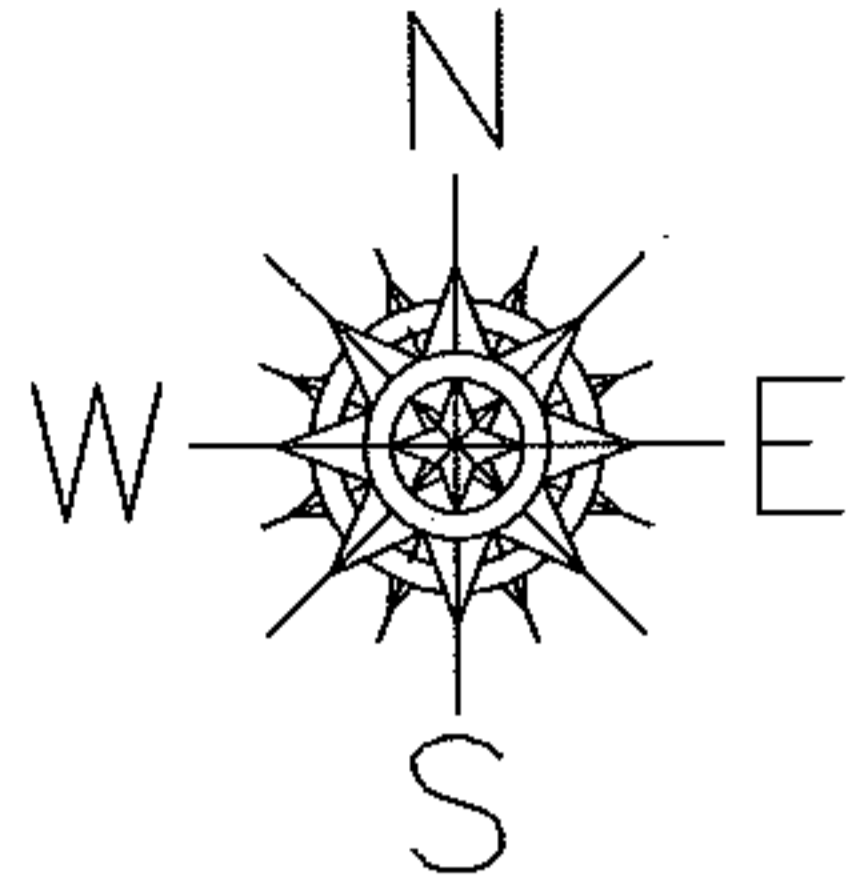
PARENT PARCEL: 06-26-008-101-010 & -011
CHILD PARCEL: XX-XX-XXX-XXX-XXX
STARTING POINT: XXXXXX

11-02258-C

FRONTAGE CORRECTION

06-26-008-101-010
~~65.93 X ?~~
65.465 X ?
PER INST. # 20070188336

06-26-008-101-011
~~50 X ?~~
50.465 X ?
PER INST. # 20040977796



SPLITS/DEEDS PROCESSED

LORAIN COUNTY TAX MAP DEPARTMENT
226 MIDDLE AVE. ELYRIA, OHIO

SURVEYED BY: NONE
CLOSURE: NONE
MAP PAGE(S): 6-137
APPROVED BY: TJS DATE: 3/10/11
SCALE: 1" = 50' PRIOR INST.: 20070188336