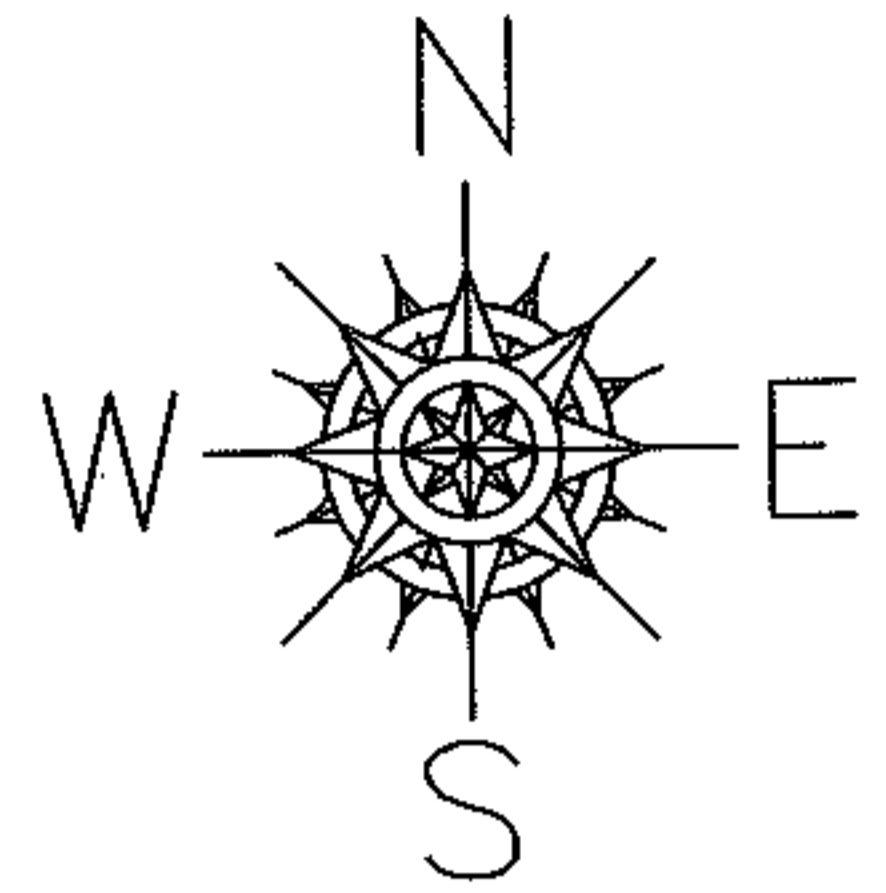
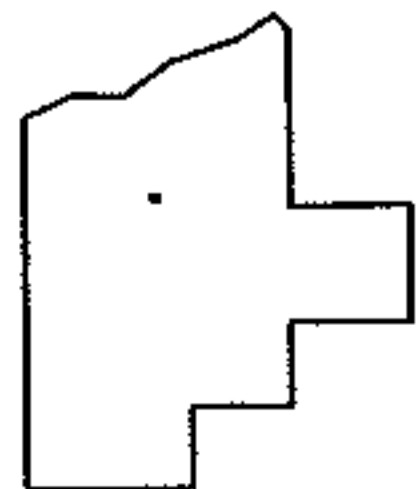
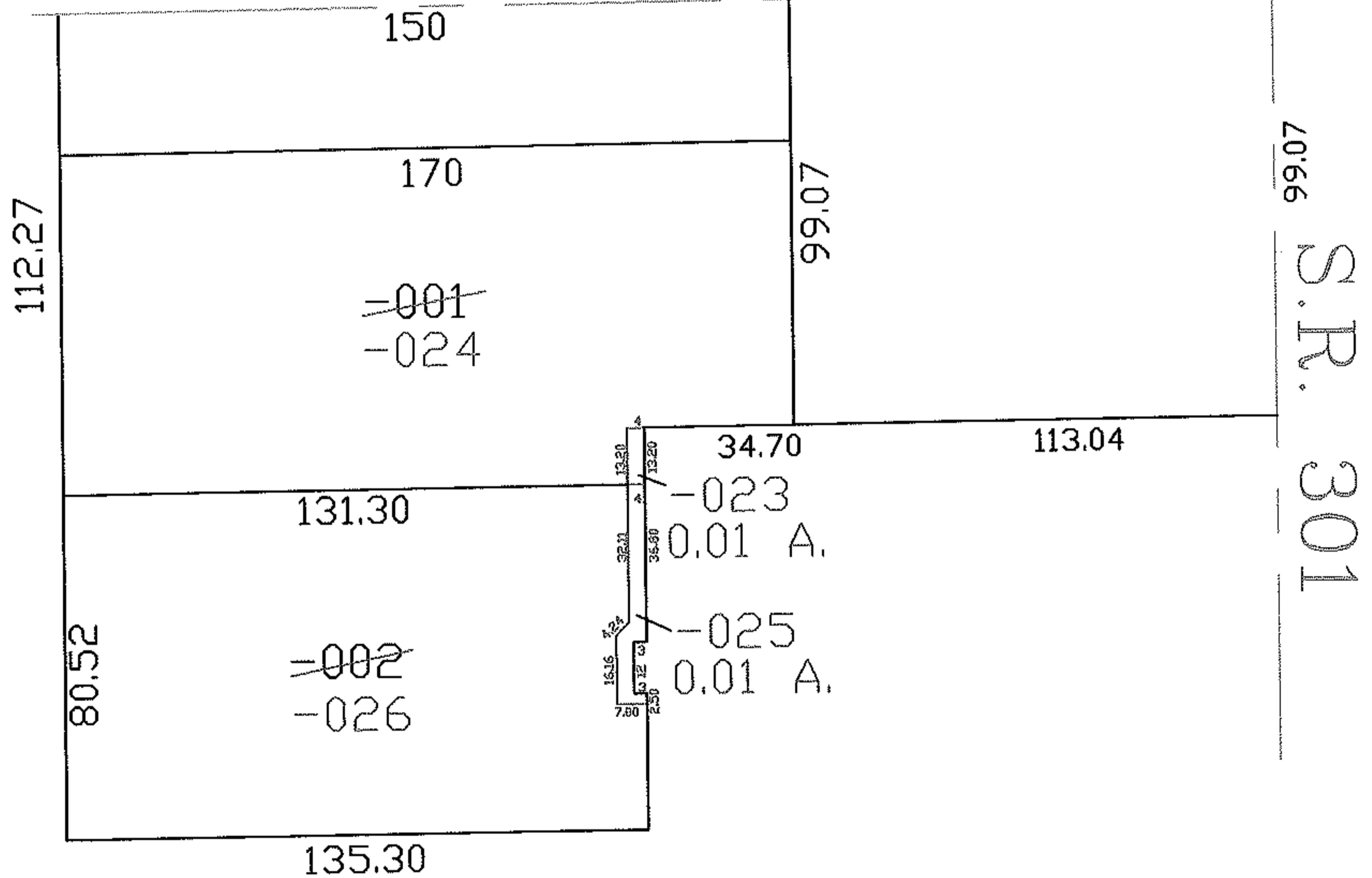


PARENT PARCEL: 15-00-056-103-001, & -002
CHILD PARCEL: 15-00-056-103-024 thru -026
STARTING POINT: INT CL SR 303 AND CL OF 301

06-02247



S.R. 303



SPLITS/DEEDS PROCESSED

LORAIN COUNTY TAX MAP DEPARTMENT
226 MIDDLE AVE. ELYRIA, OHIO

SURVEYED BY: CHRISTOPHER HIRZEL
CLOSURE: 1:10,000
MAP PAGE(S): 15-00-056-B
APPROVED BY: DRH DATE: 12/12/2006
SCALE: 1" = 50' PRIOR INSTRUMENT: