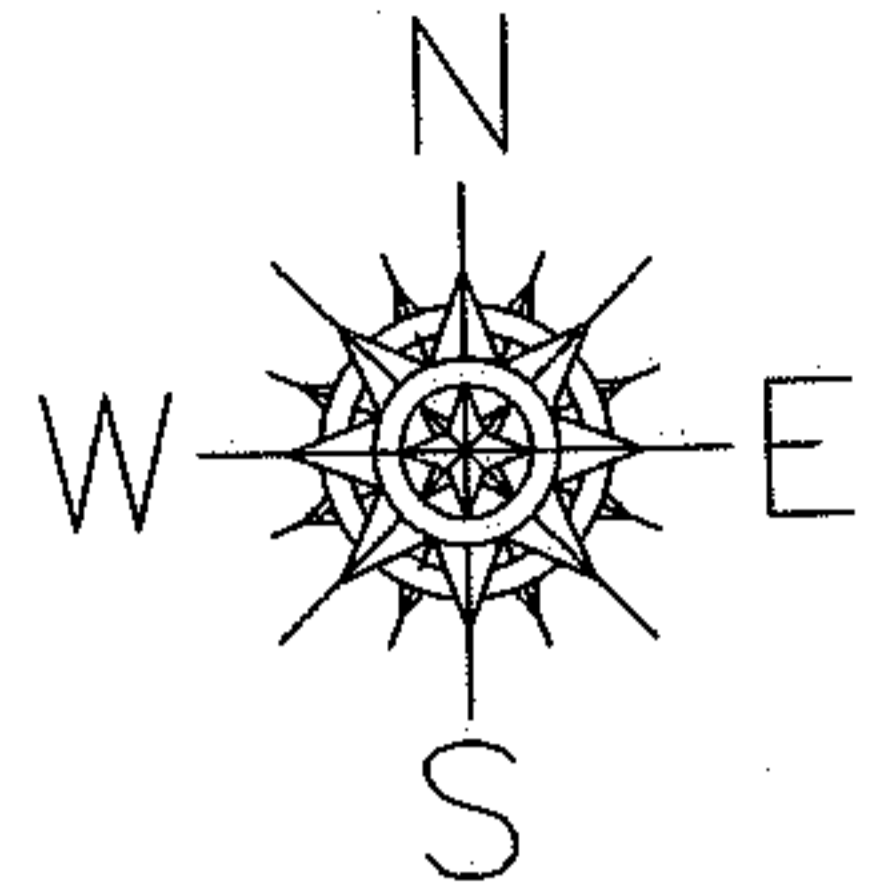


PARENT PARCEL: 02-02-020-101-001

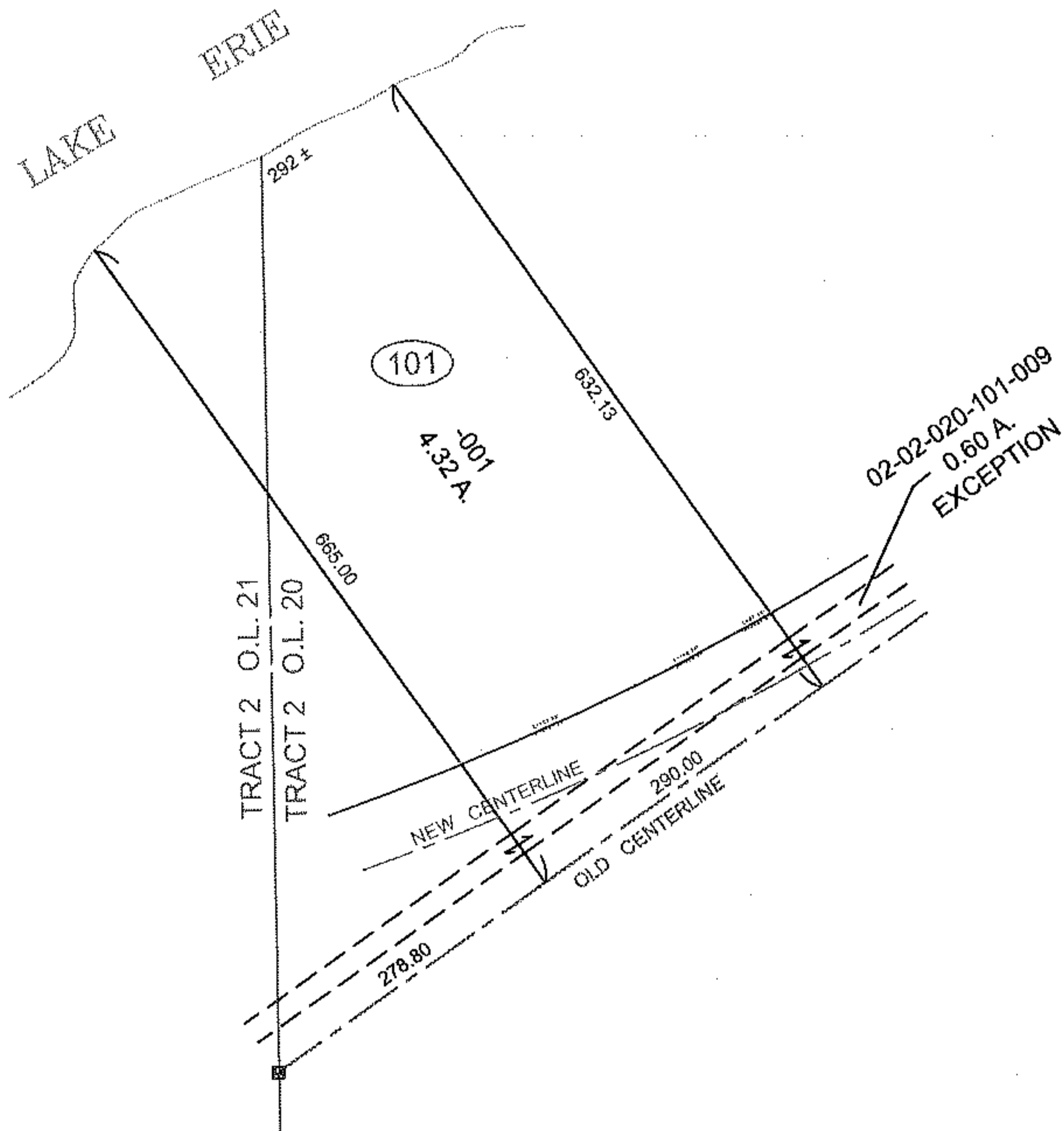
CHILD PARCEL: XX-XX-XXX-XXX-XXX

STARTING POINT: MON. BOX, OLD CL OF WEST ERIE AVE. (S.R. 6) & WEST LINE OF O.L. 20

11-02241-D



MAP CORRECTION ONLY



SPLITS/DEEDS PROCESSED
LORAIN COUNTY TAX MAP DEPARTMENT
226 MIDDLE AVE. ELYRIA, OHIO

SURVEYED BY:	EDWARD B. DUDLEY
CLOSURE:	0.01 : 10.000
MAP PAGE(S):	02-02-020-A
APPROVED BY:	IJS DATE: 2/23/11
SCALE:	1" = 200 PRIOR INSTRUMENT: 20050072841