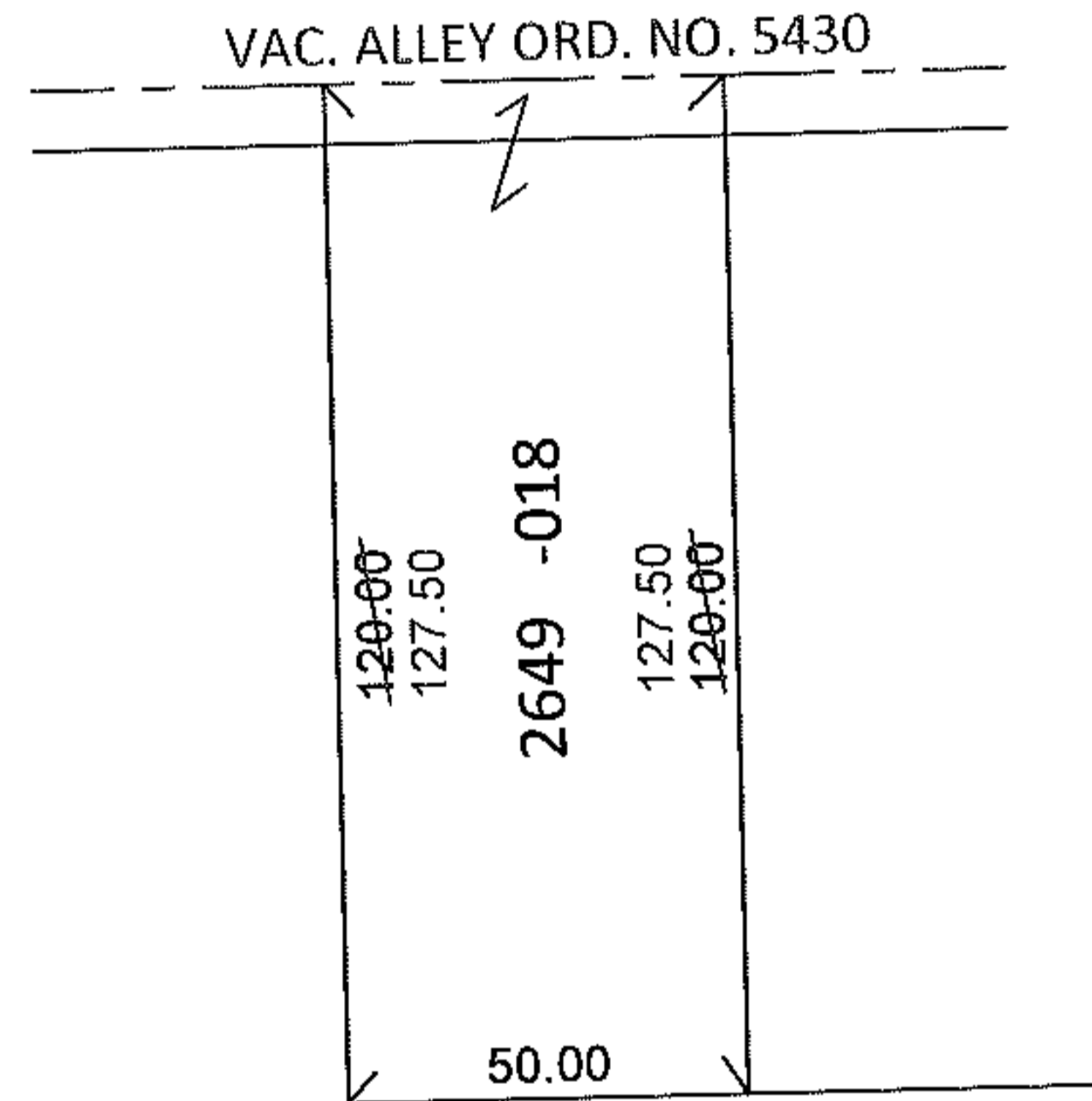
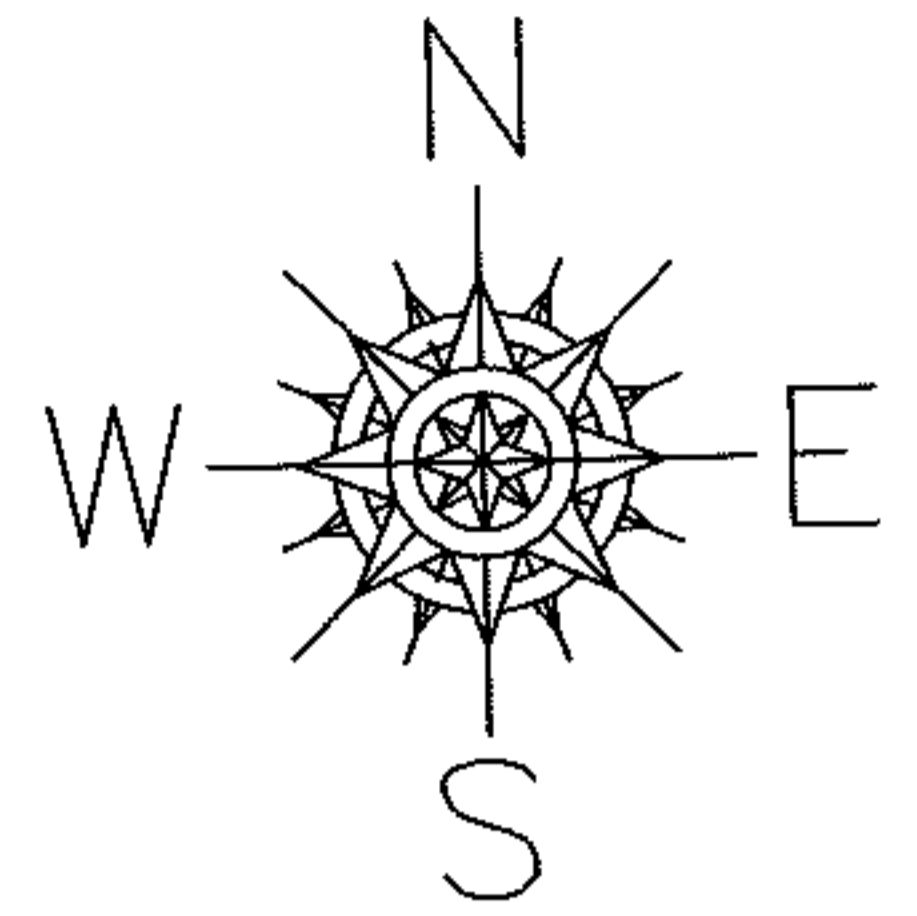


PARENT PARCEL: 03-00-094-114-018

CHILD PARCEL:

STARTING POINT: S/L 2649 IN SHEFFIELD LAND AND IMPROVEMENT CO SUB. NO. 4(VOL. 6 PG. 3)

11-02240-C



35TH ST.

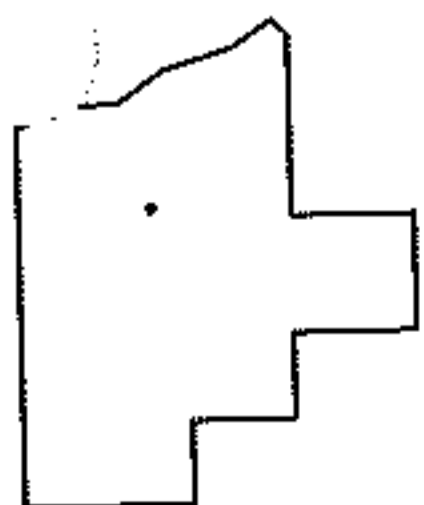
DEPTH CORRECTION

03-00-094-114-018

127.50

50 X 120

PER DEED & VAC. ORD. 5430



SPLITS/DEEDS PROCESSED

LORAIN COUNTY TAX MAP DEPARTMENT  
226 MIDDLE AVE. ELYRIA, OHIO

SURVEYED BY: N/A

CLOSURE: N/A

MAP PAGE(S): 3-00-094-B

APPROVED BY: RRM DATE: 3-30-11

SCALE: 1"= 50' PRIOR INST.: 20070211088