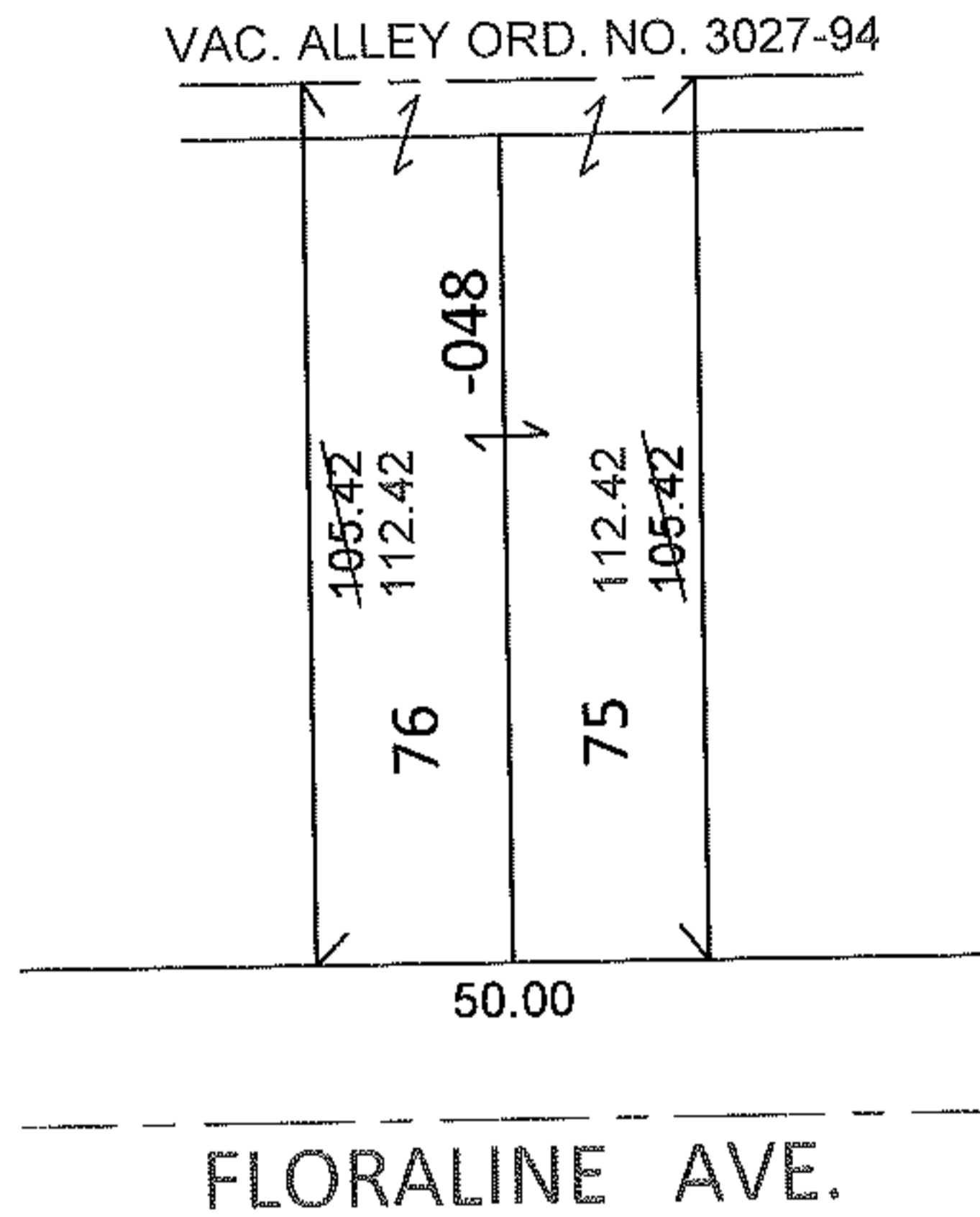
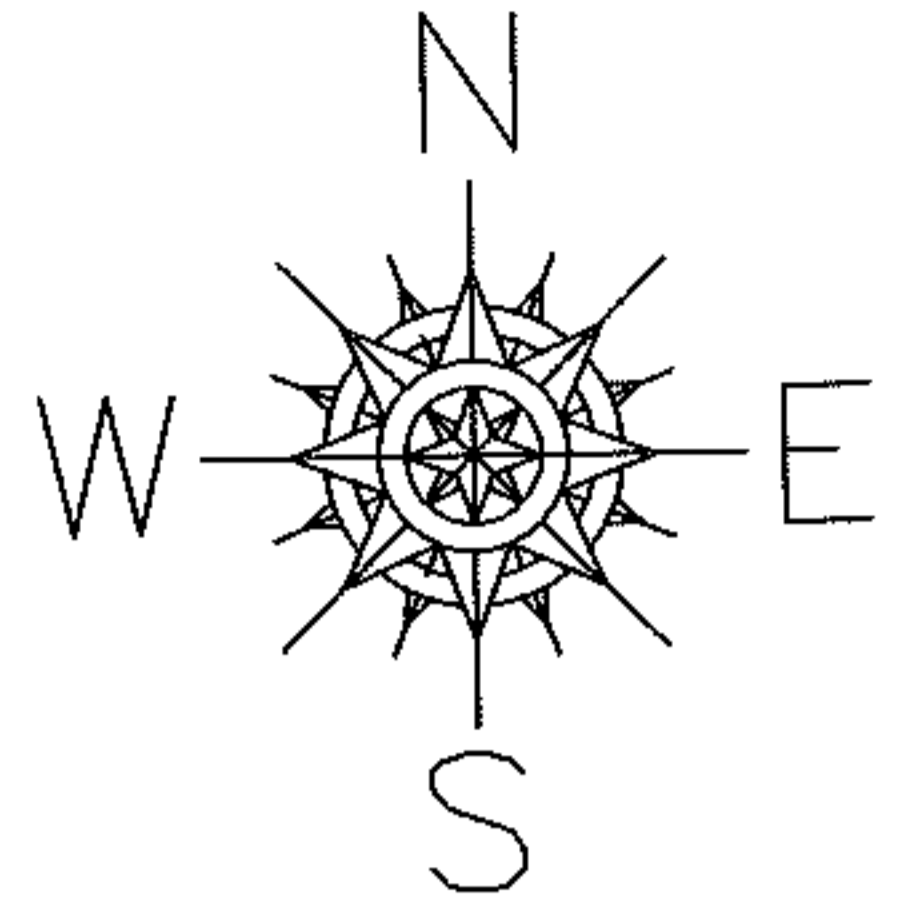


PARENT PARCEL: 07-00-009-116-048

11-02237-C

CHILD PARCEL:

STARTING POINT: S/L 75 & 76 IN BLOCK 12 OF RIDGEVILLE HEIGHTS NO.2 (VOL.11 PG.23)

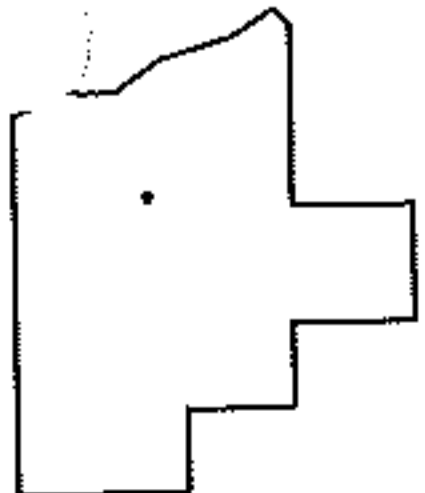


DEPTH CORRECTION

07-00-009-116-048

112.42
50 X ~~105.00~~

PER DEED & VAC. ORD. 3027-94



SPLITS/DEEDS PROCESSED

LORAIN COUNTY TAX MAP DEPARTMENT
226 MIDDLE AVE. ELYRIA, OHIO

SURVEYED BY: N/A

CLOSURE: N/A

MAP PAGE(S): 7-00-009-B

APPROVED BY: RRM DATE: 4-1-11

SCALE: 1" = 50' PRIOR INST.: 20100343304