

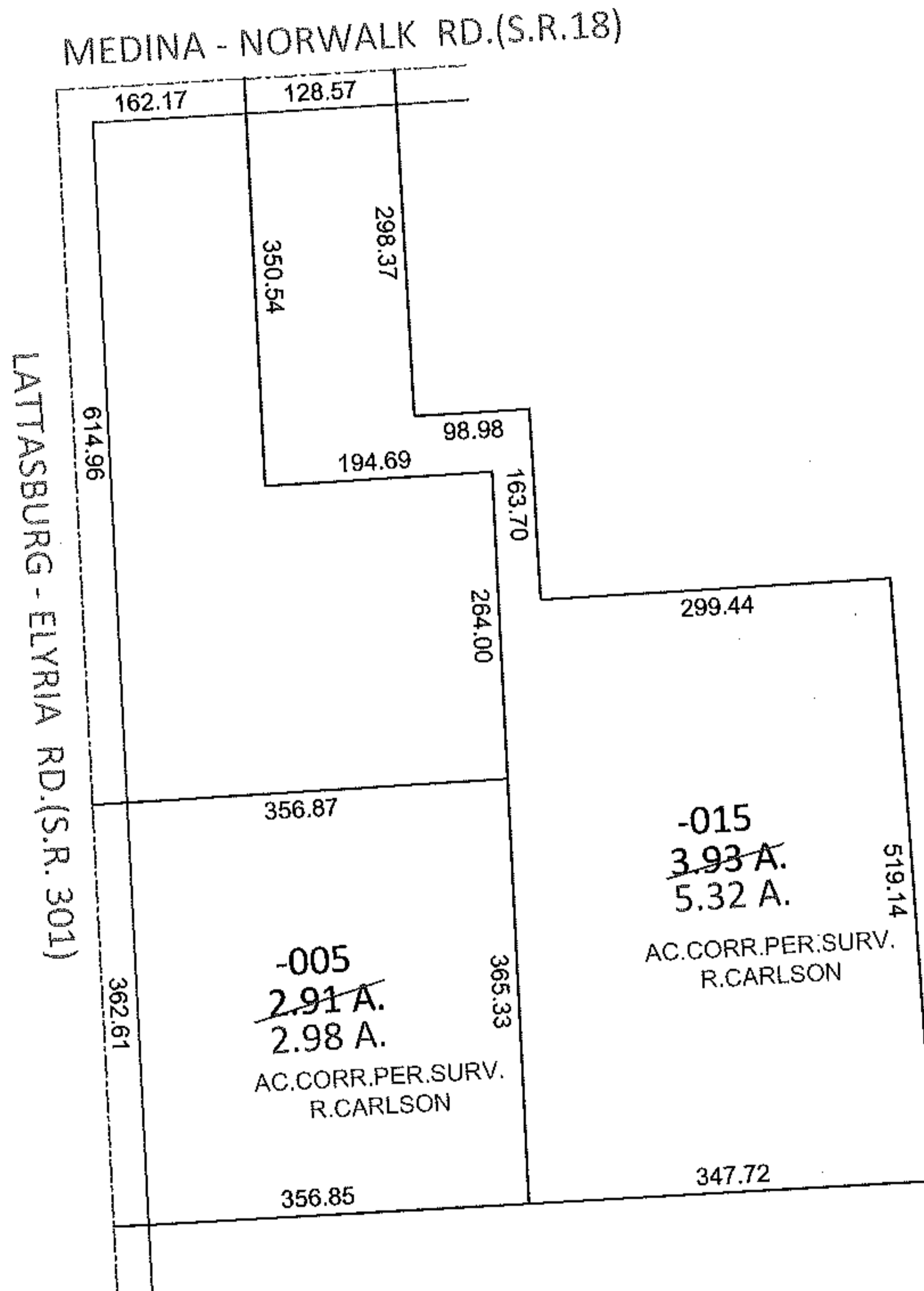
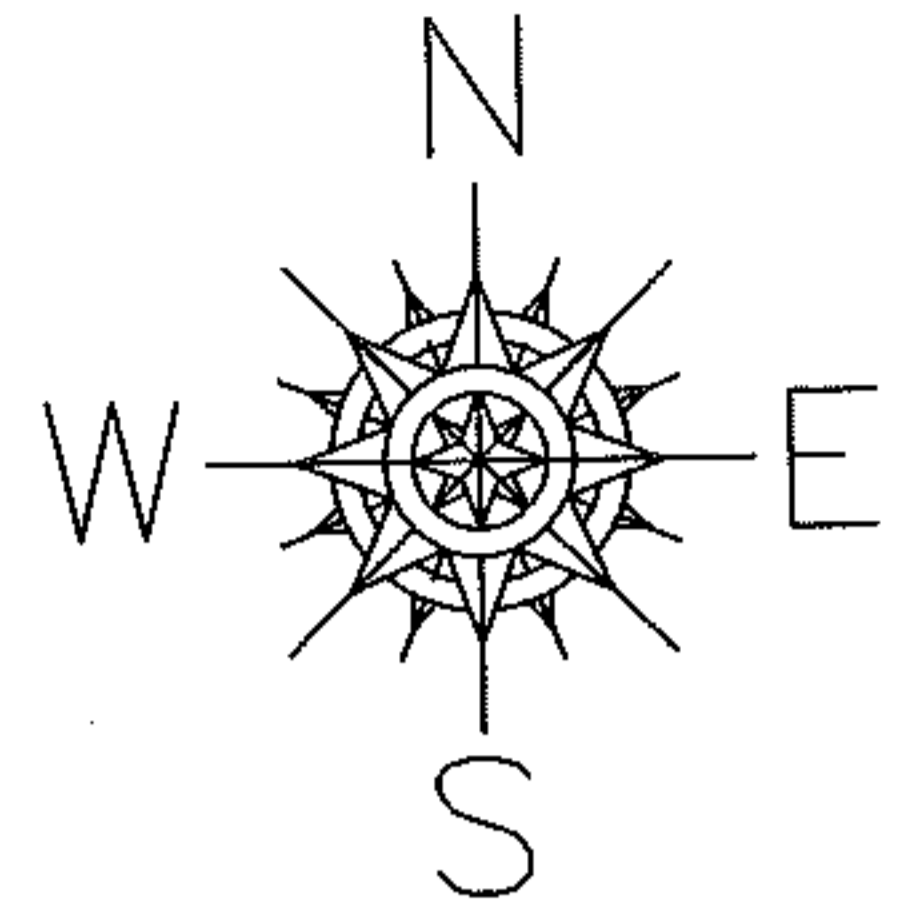
RASTER

PARENT PARCEL: 19-03-013-000-005, -015

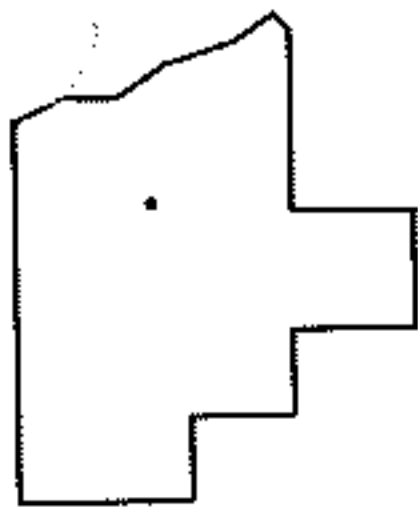
11-02227-A

CHILD PARCEL:

STARTING POINT: INTERSECTION OF C/L OF S.R.301 AND C/L OF S.R.18



*OR 1074/788
20070193355



SPLITS/DEEDS PROCESSED

LORAIN COUNTY TAX MAP DEPARTMENT
226 MIDDLE AVE. ELYRIA, OHIO

SURVEYED BY: RICHARD D. CARLSON

CLOSURE: .01:10,000

MAP PAGE(S): 19-03-013

APPROVED BY: RRM DATE: 2-7-11

SCALE: 1"= 200 PRIOR INST.: *SEE ABOVE