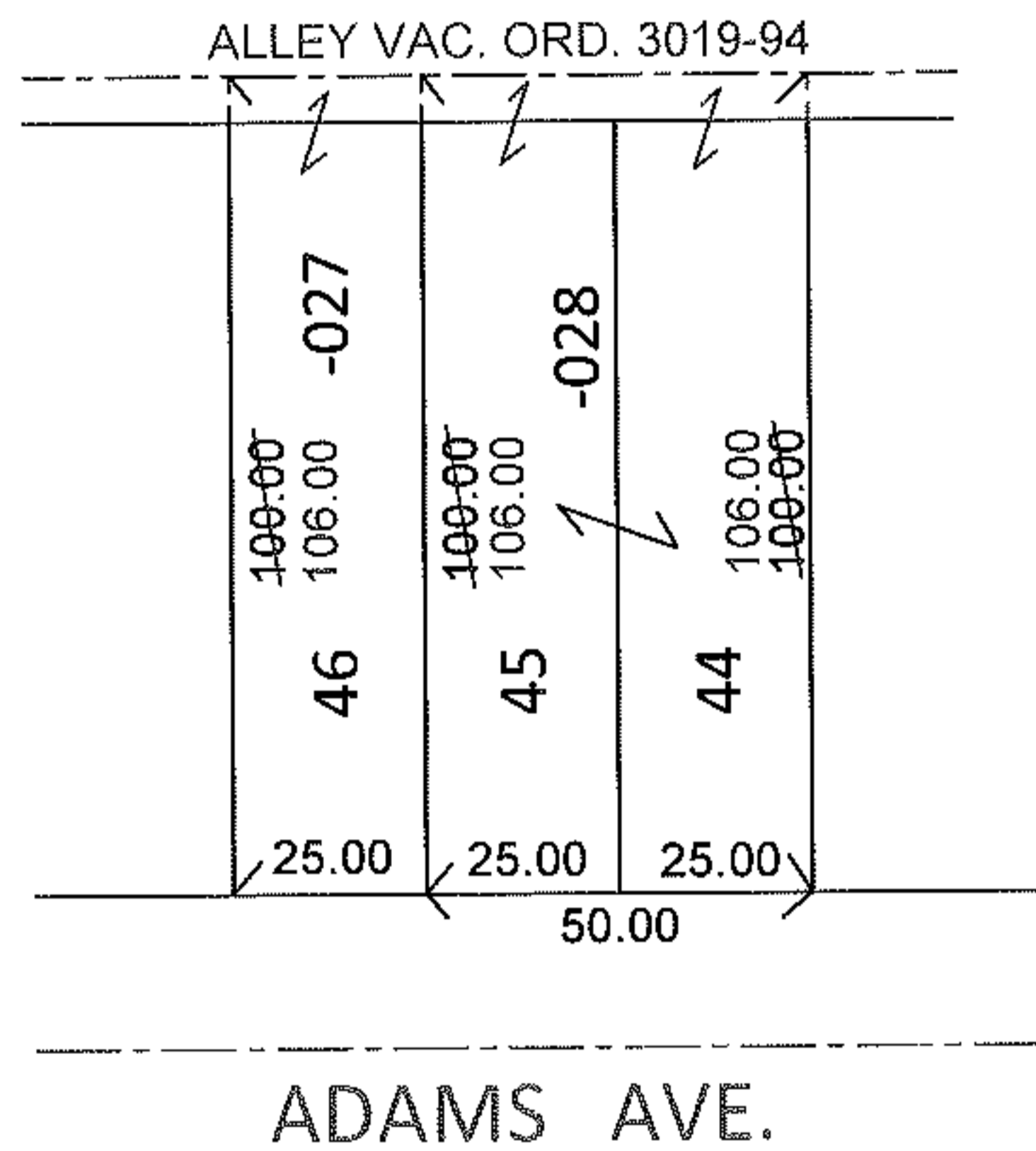
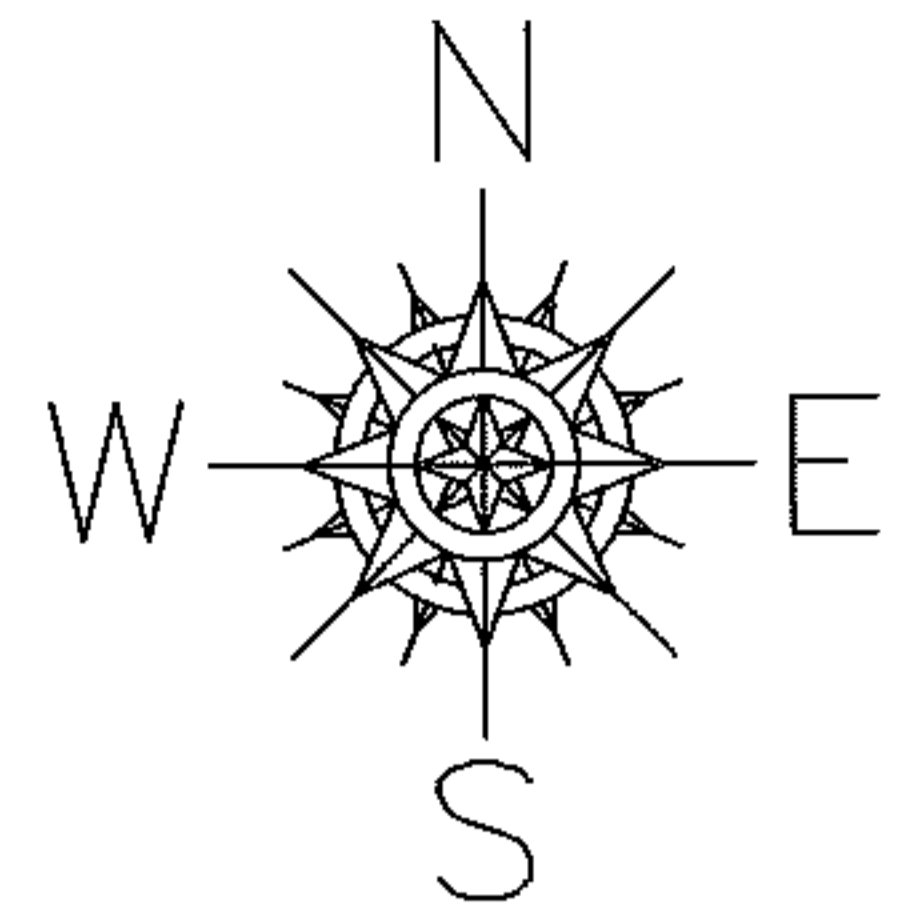


PARENT PARCEL: 07-00-009-110-027, -028

CHILD PARCEL: _____

STARTING POINT: S/L'S 44-46 IN BLOCK 3 OF RIDGEVILLE HEIGHTS ALLOT. NO.2 (VOL. 11 PG. 15)

11-02223-C



DEPTH CORRECTION

07-00-009-110-027

07-00-009-110-028

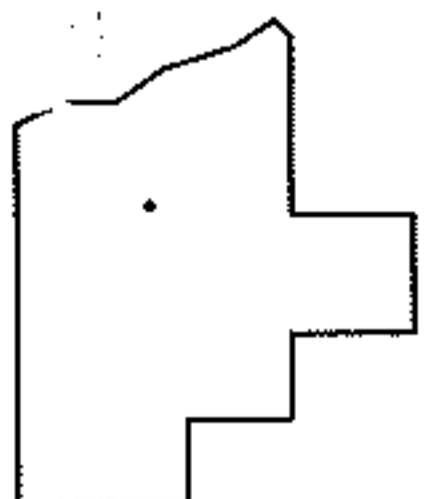
106

106

25 X 100

50 X 100

PER DEED AND VAC. ORD. 3019-94



SPLITS/DEEDS PROCESSED

LORAIN COUNTY TAX MAP DEPARTMENT
226 MIDDLE AVE. ELYRIA, OHIO

SURVEYED BY: N/A

CLOSURE: N/A

MAP PAGE(S): 7-00-009-B

APPROVED BY: RRM DATE: 4-7-11

SCALE: 1" = 50' PRIOR INST.: 20070213215