

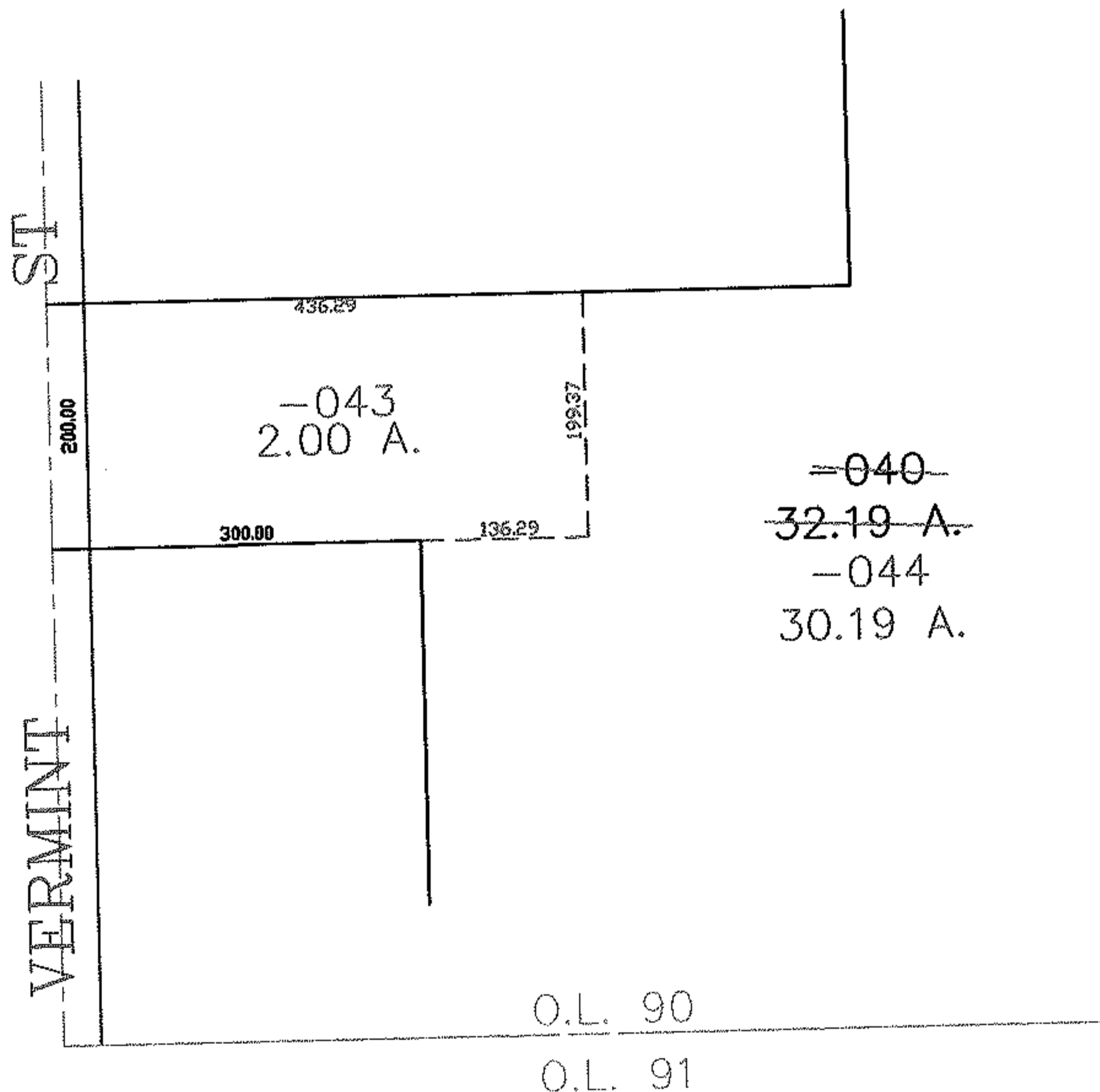
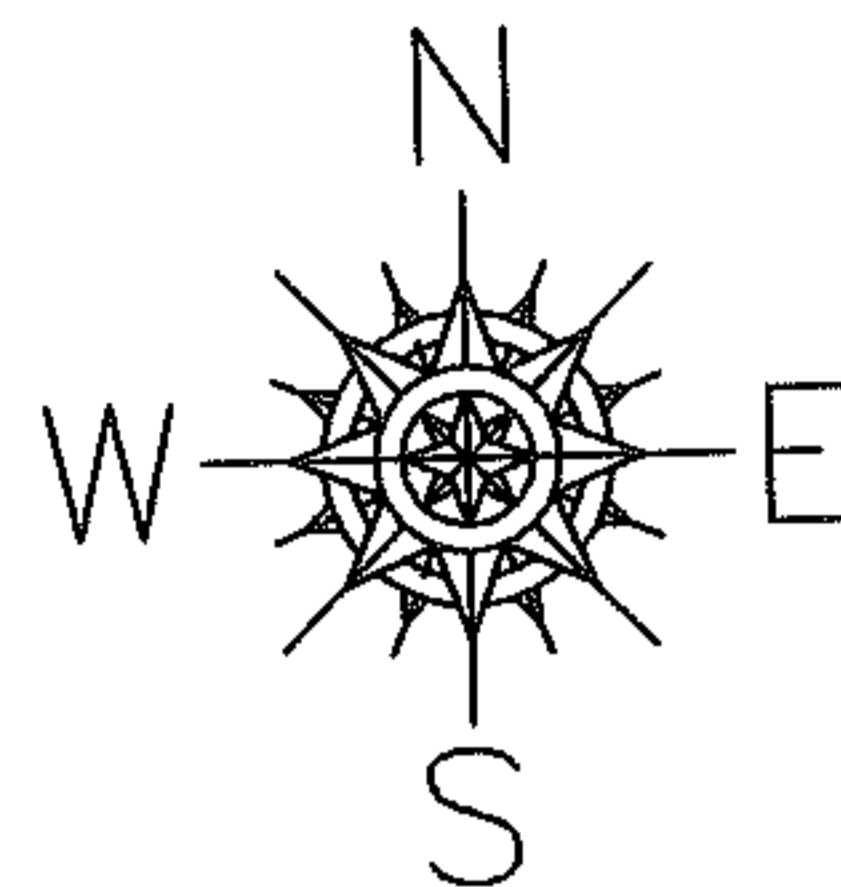
RASTER

PARENT PARCEL: 15-00-090-000-040

CHILD PARCEL: 15-00-090-000-043, -044

STARTING POINT: CENTERLINE OF VERMONT ST & O.L. 90

06-02221



**SPLITS/DEEDS PROCESSED**

LORAIN COUNTY TAX MAP DEPARTMENT  
226 MIDDLE AVE. ELYRIA, OHIO

SURVEYED BY: CHARLES FLANIGAN

CLOSURE: 0.00 : 10.000

MAP PAGE(S): 15-00-090-B

APPROVED BY: JAH DATE: 9-12-06

SCALE: 1" = 200 PRIOR INSTRUMENT: OR 729/2208