

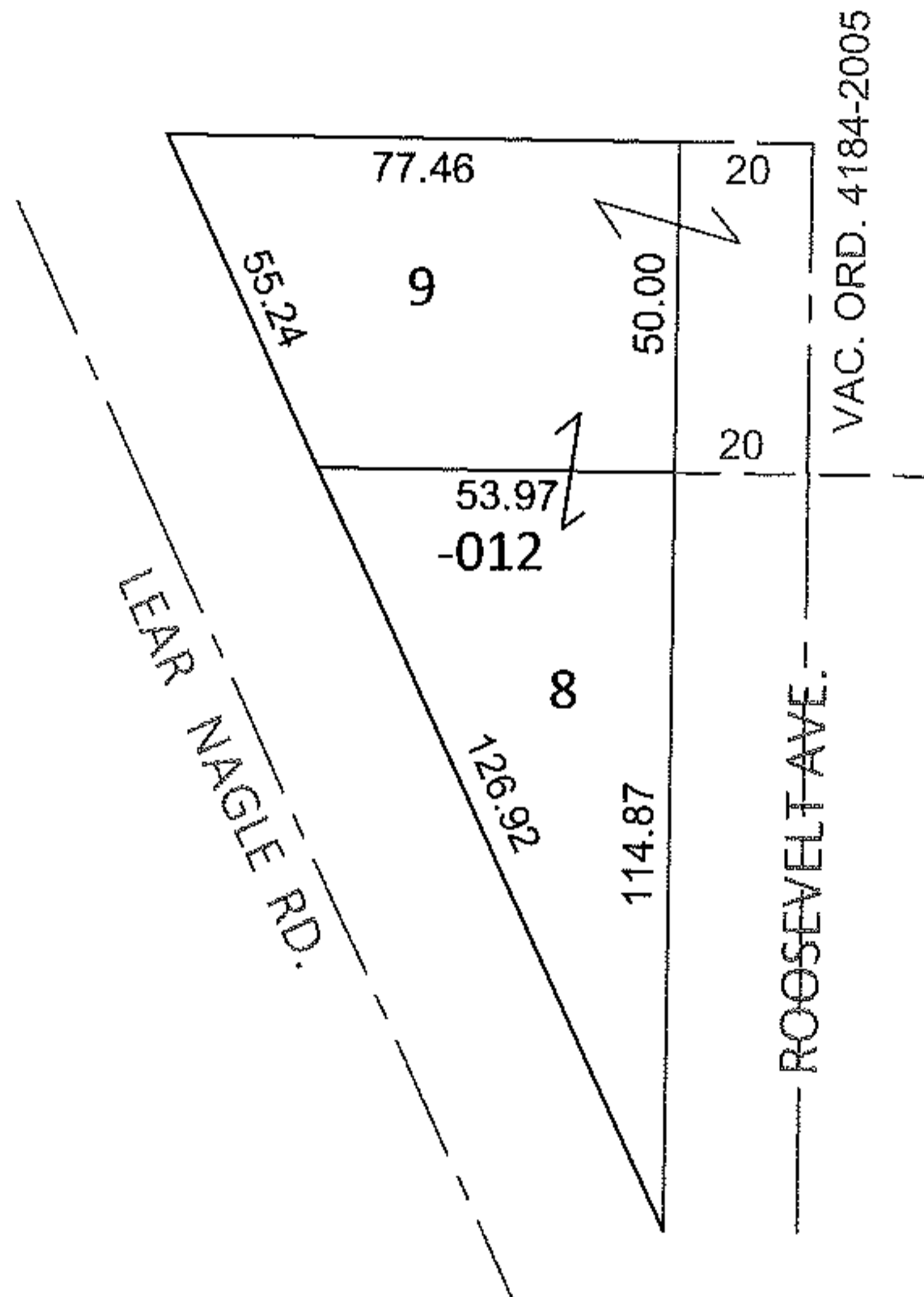
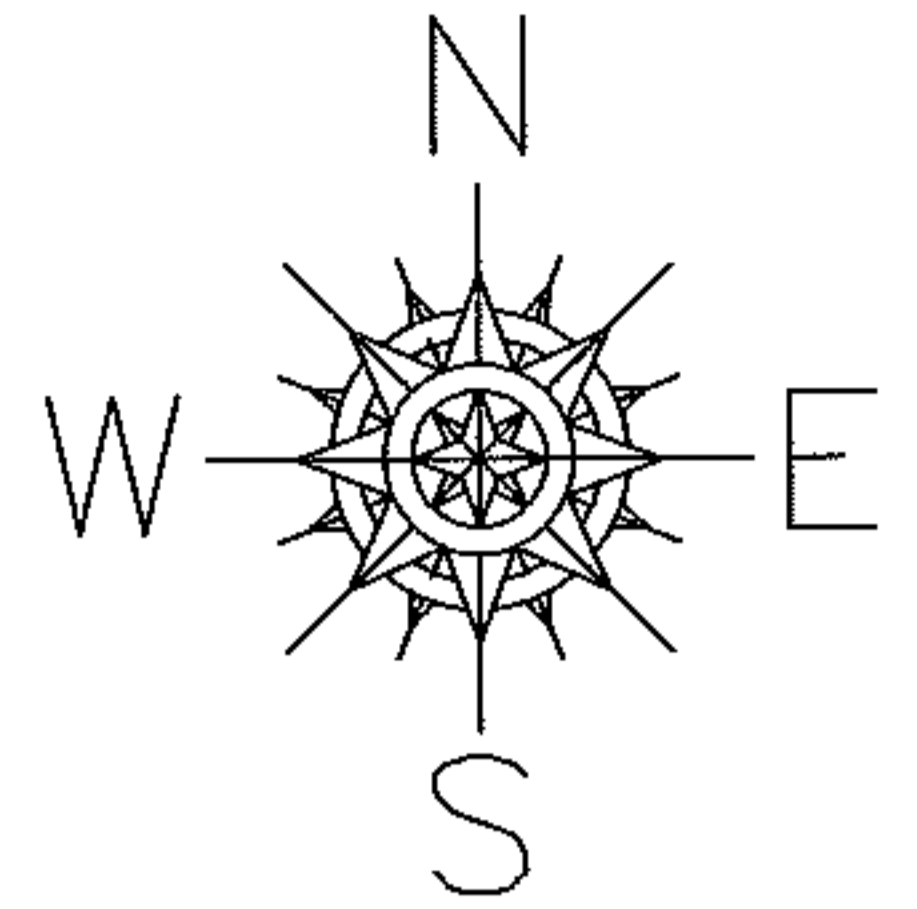
RASTER

PARENT PARCEL: 07-00-007-124-012

CHILD PARCEL: _____

STARTING POINT: S/L'S 8 & 9 IN BLOCK "Q" OF RIDGEVILLE HEIGHTS ALLOT. (VOL.10 PG.11)

11-02219-C



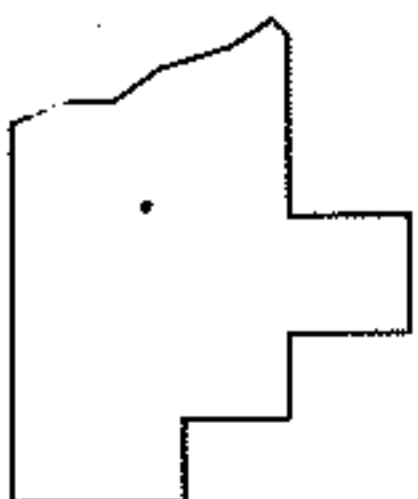
DEPTH CORRECTION

07-00-007-124-012

97.46 IRR

164.87 X ~~-----~~

PER DEED AND VAC. ORD. 4184-2005



SPLITS/DEEDS PROCESSED

LORAIN COUNTY TAX MAP DEPARTMENT
226 MIDDLE AVE. ELYRIA, OHIO

SURVEYED BY: N/A

CLOSURE: N/A

MAP PAGE(S): 7-00-007-C

APPROVED BY: RRM DATE: 3-16-11

SCALE: 1" = 50' PRIOR INST.: 20070232526