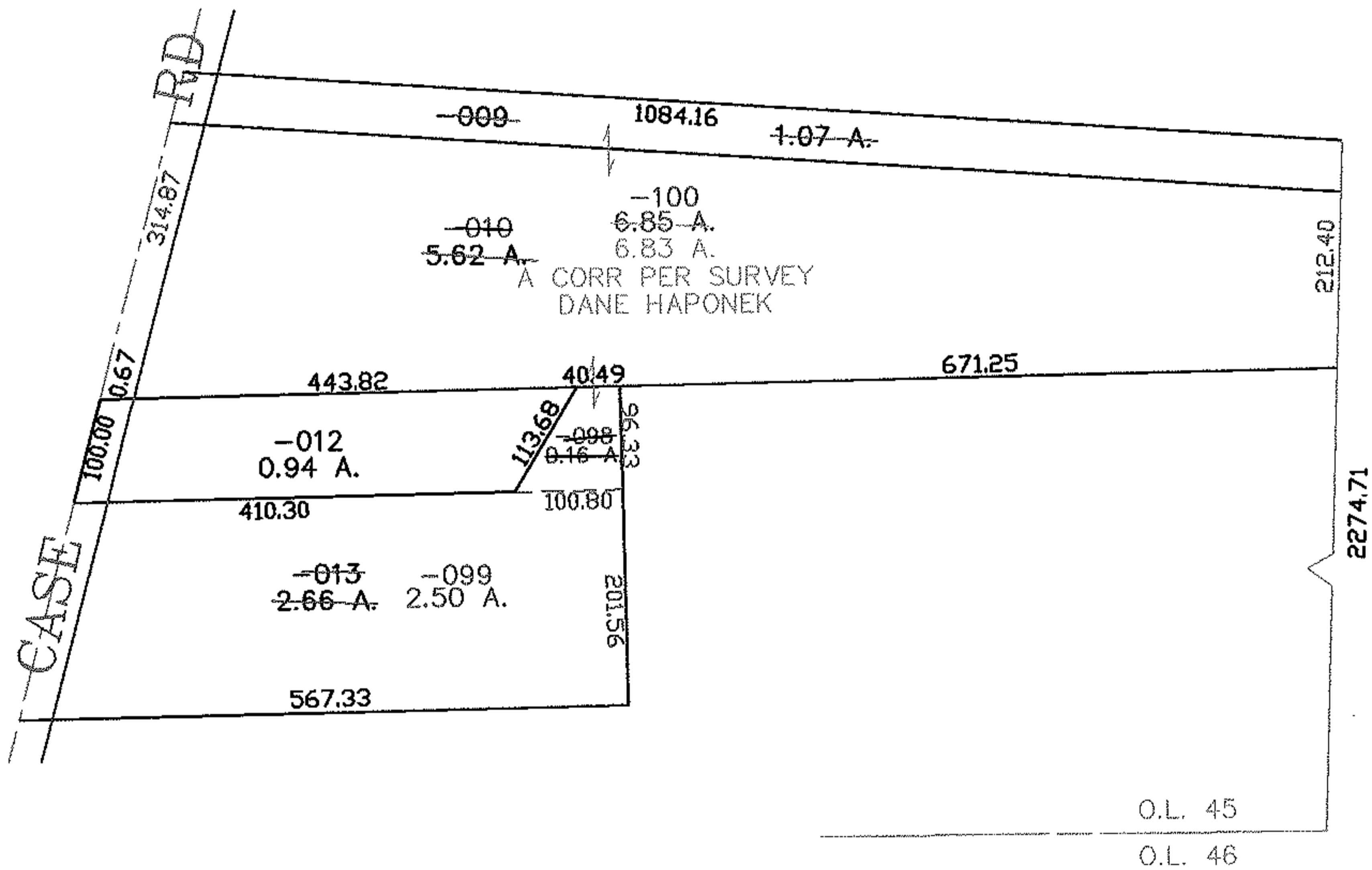
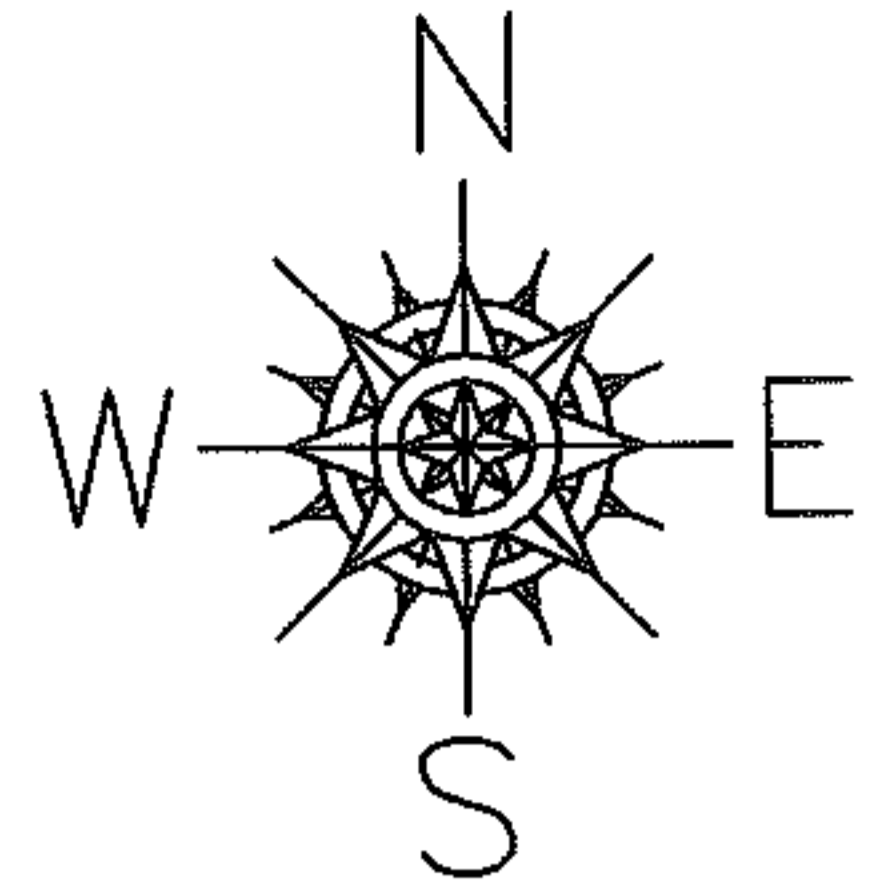


PARENT PARCEL: 07-00-045-110-013, -009, -010

CHILD PARCEL: 07-00-045-110-098 THRU -100

STARTING POINT: INTERSECTION OF O.L. 45 AND O.L. 46

06-02218



SPLITS/DEEDS PROCESSED
 LORAIN COUNTY TAX MAP DEPARTMENT
 226 MIDDLE AVE. ELYRIA, OHIO

SURVEYED BY: DANE HAPONEK
 CLOSURE: 0.00 : 10.000
 MAP PAGE(S): 07-00-045-D
 APPROVED BY: JAH DATE: 9-15-06
 SCALE: 1" = 200 PRIOR INSTRUMENT: 20060147625