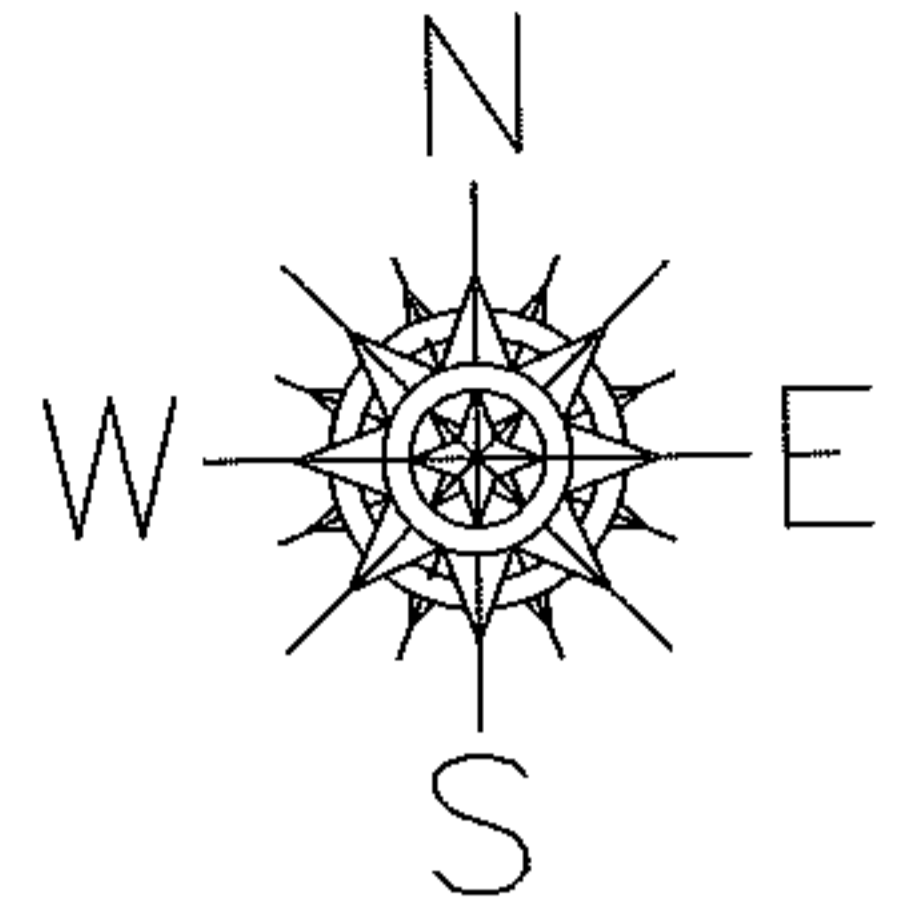


PARENT PARCEL: 16-00-025-101-008

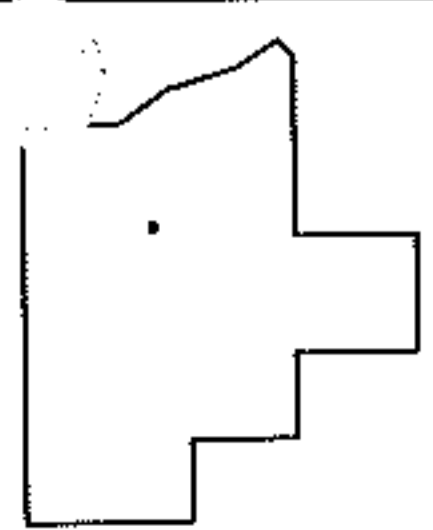
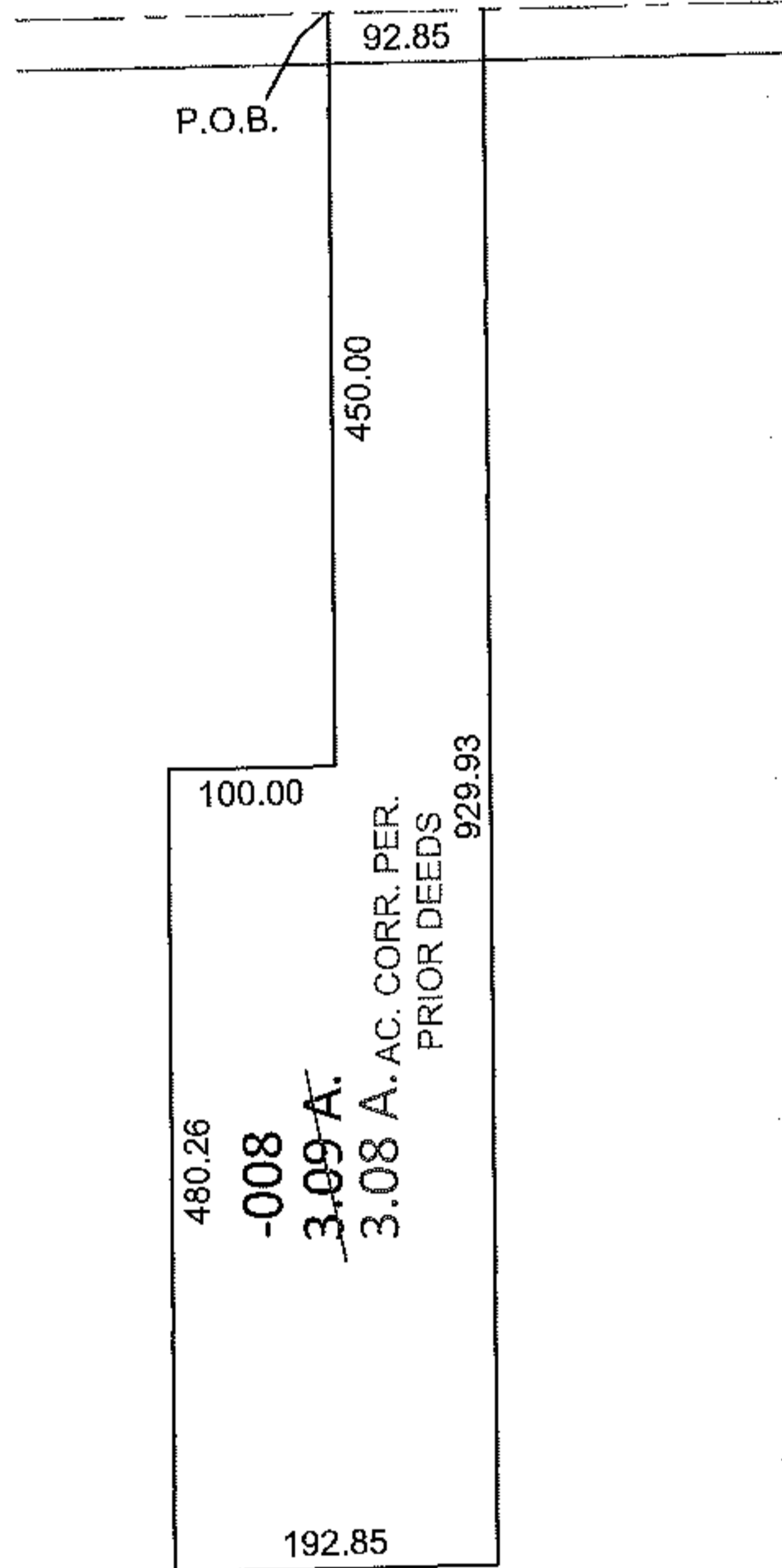
CHILD PARCEL: _____

STARTING POINT: C/L OF S.R. 57 AT THE NORTHEAST CORNER OF LAND CONVEYED TO
WILLIAM TAFT & RUBY E. DUKE (DV 702/345)

11-02211-A



MEDINA - ELYRIA RD.(S.R. 57)



SPLITS/DEEDS PROCESSED

LORAIN COUNTY TAX MAP DEPARTMENT
226 MIDDLE AVE. ELYRIA, OHIO

SURVEYED BY: N/A

CLOSURE: .01:10,000

MAP PAGE(S): 16-00-025-B

APPROVED BY: RRM DATE: 4/4/11

SCALE: 1"= 200 PRIOR INST.: 20000719319