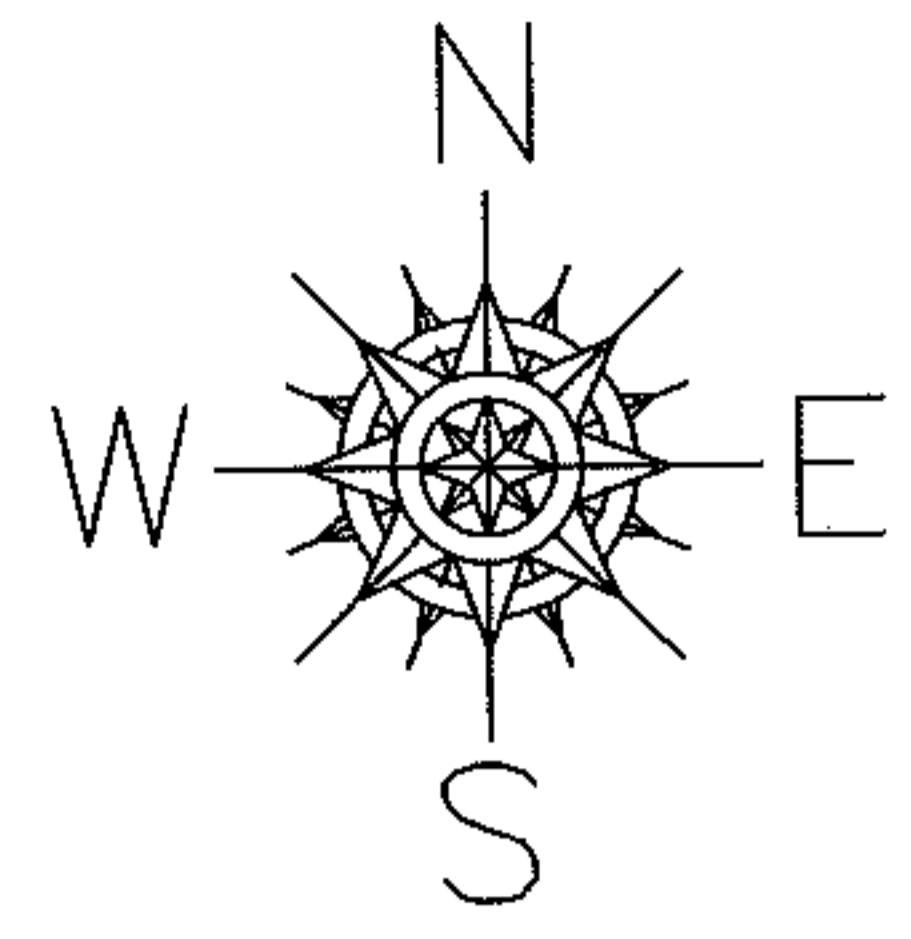


RASTER

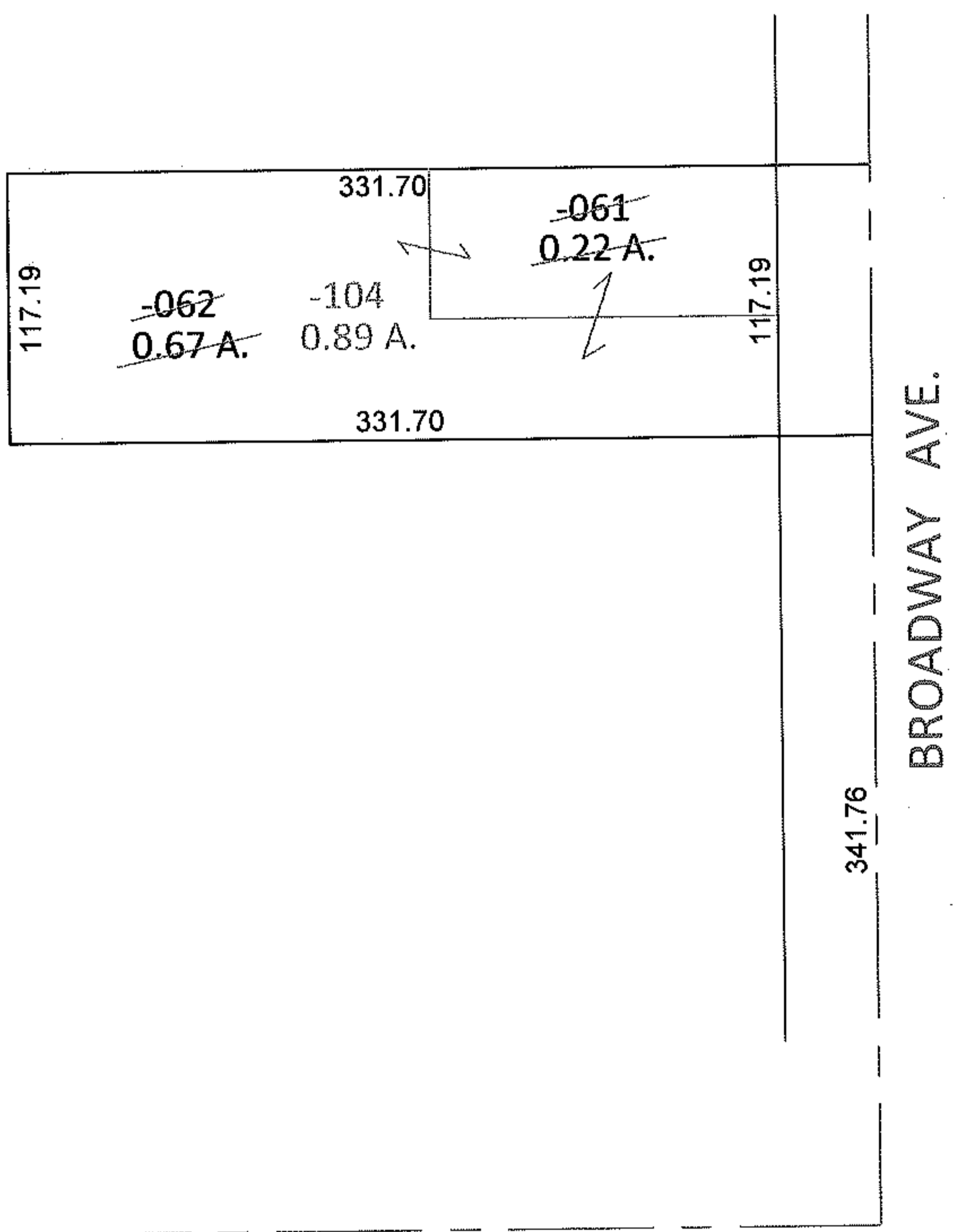
PARENT PARCEL: 03-00-113-102-061, -062  
CHILD PARCEL: 03-00-113-102-104  
STARTING POINT: INTERSECTION OF C/L OF COOPER FOSTER PARK RD. AND C/L OF BROADWAY AVE.

11-02209-C



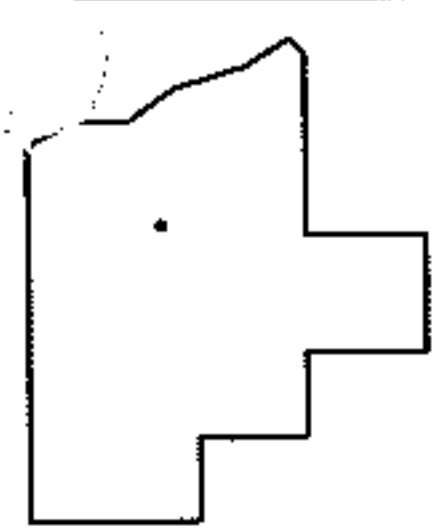
COMBINATION

PER PRIOR DEEDS  
DV 1358/300  
20020828141



COOPER FOSTER PARK RD.

BROADWAY AVE.



SPLITS/DEEDS PROCESSED  
LORAIN COUNTY TAX MAP DEPARTMENT  
226 MIDDLE AVE. ELYRIA, OHIO

SURVEYED BY: N/A  
CLOSURE: N/A  
MAP PAGE(S): 3-00-113-A  
APPROVED BY: RRM DATE: 2-4-11  
SCALE: 1"= 100 PRIOR INST.: 20020828141