

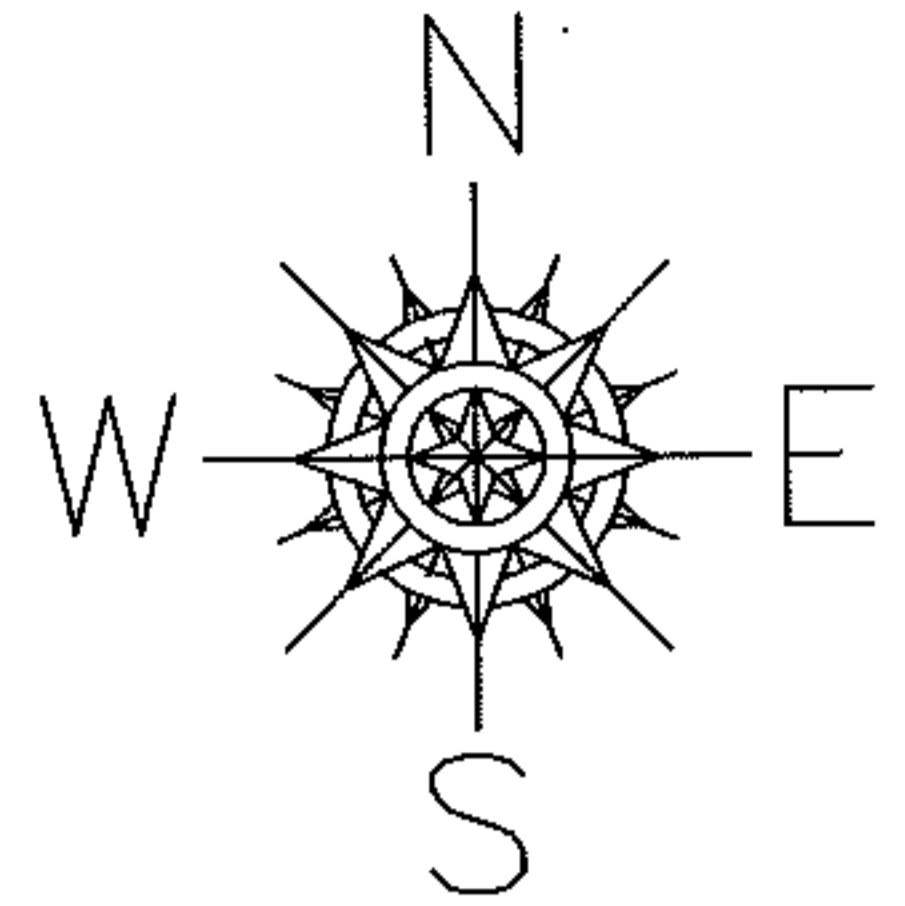
RASTER

PARENT PARCEL: 03-00-029-106-028

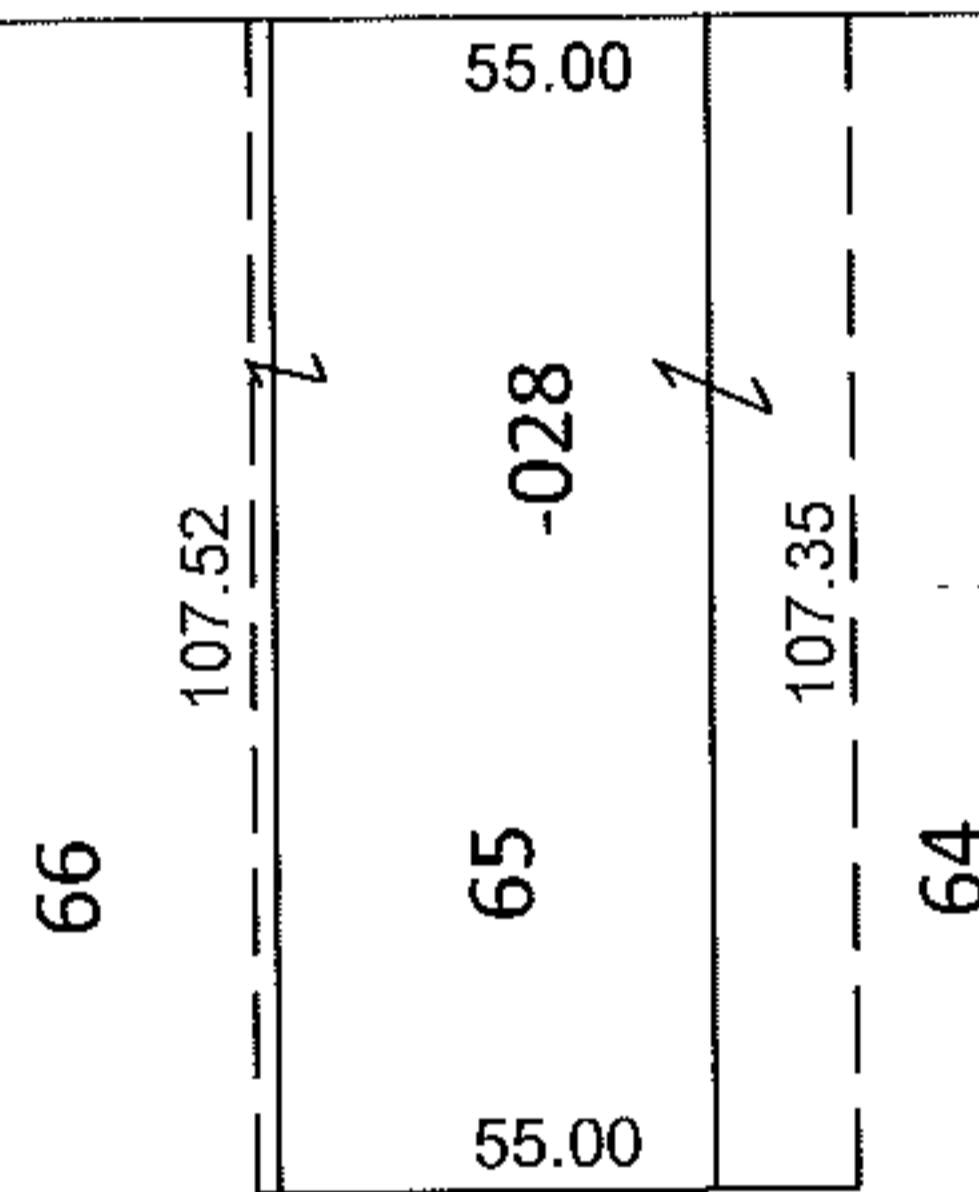
CHILD PARCEL: _____

STARTING POINT: S/L'S 64-66 IN BLOCK C IN KNICKERBOCKER SUB. NO.2(VOL.12 PG.16)

11-02207-C



BROCKLEY AVE.



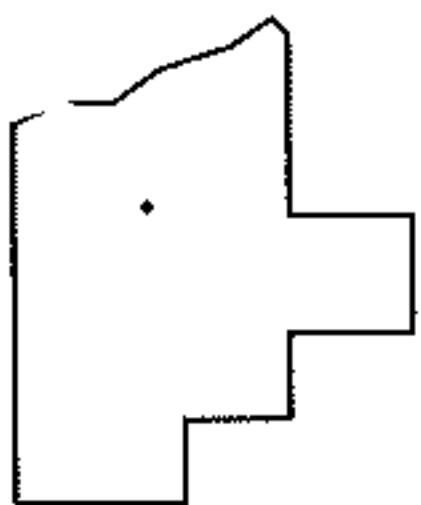
DEPTH CORRECTION

03-00-029-106-028

107.52

55 X 107

PER PRIOR DEEDS



SPLITS/DEEDS PROCESSED

LORAIN COUNTY TAX MAP DEPARTMENT
226 MIDDLE AVE. ELYRIA, OHIO

SURVEYED BY: N/A

CLOSURE: N/A

MAP PAGE(S): 3-00-029-B

APPROVED BY: RRM DATE: 2-22-11

SCALE: 1" = 50' PRIOR INST.: 20050114329