

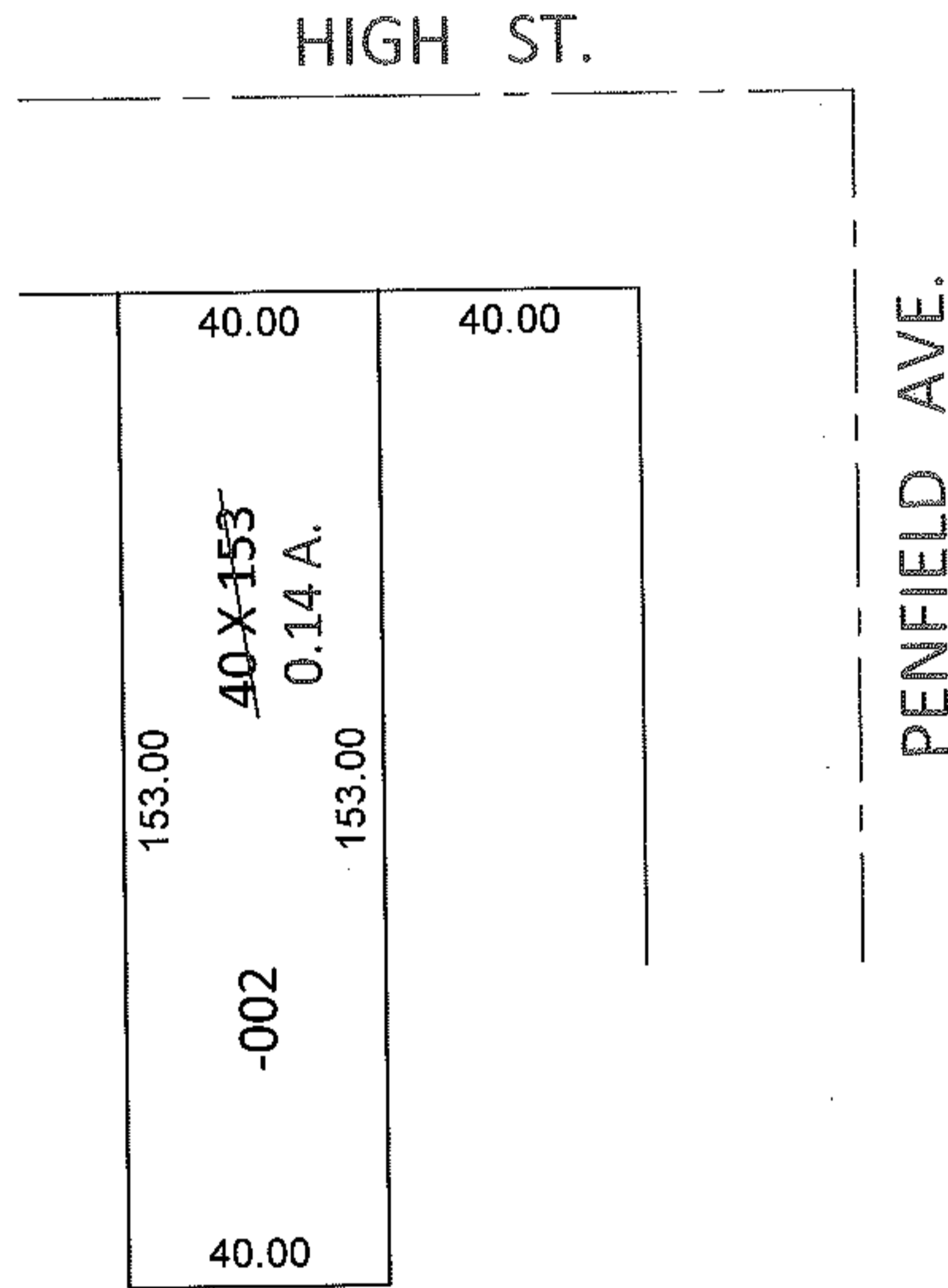
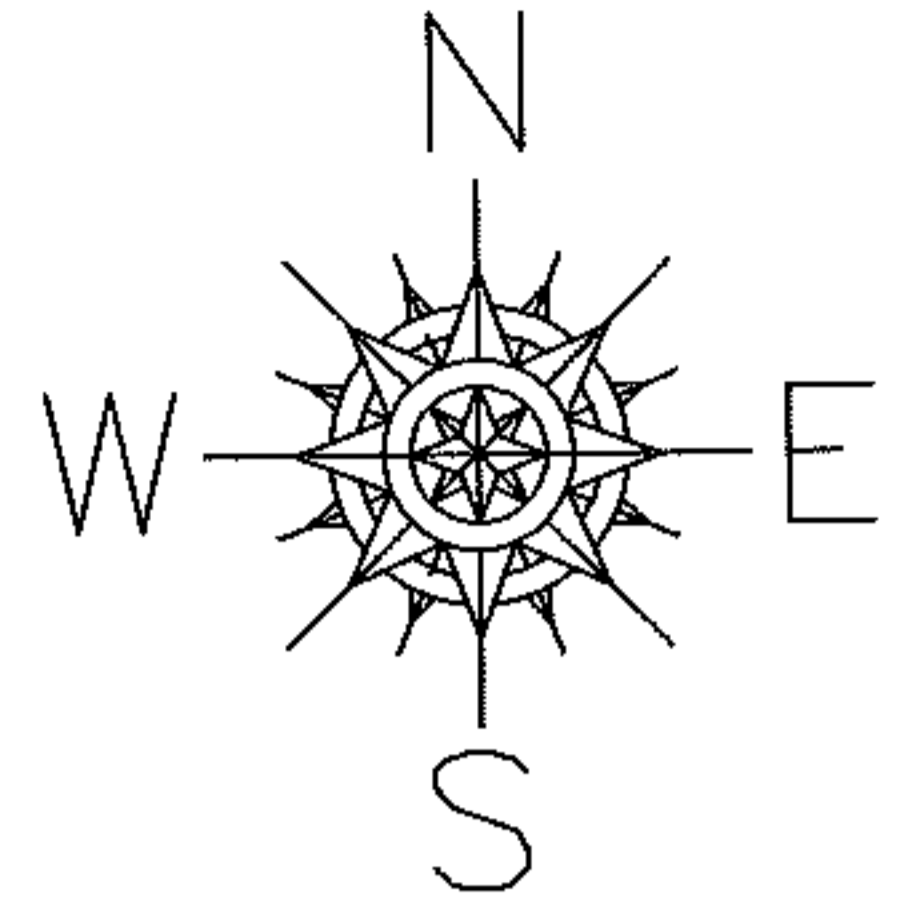
RASTER

PARENT PARCEL: 06-24-026-106-002

CHILD PARCEL: \_\_\_\_\_

STARTING POINT: INTERSECTION OF SOUTH LINE OF HIGH ST. AND WEST LINE OF PENFIELD AVE.

11-02204-C



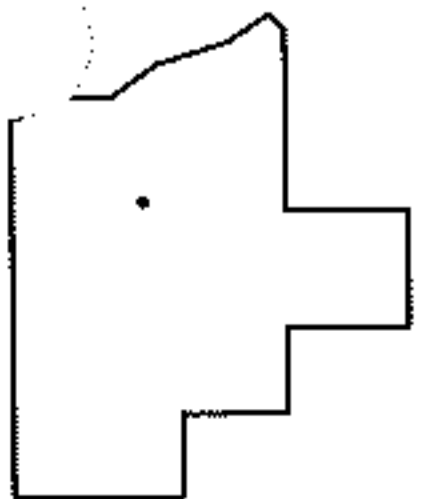
FRONTAGE AND DEPTH TO ACREAGE CORRECTION

06-24-026-106-002

0.14 A.

~~40 X 153~~

PER PRIOR DEEDS



SPLITS/DEEDS PROCESSED

LORAIN COUNTY TAX MAP DEPARTMENT  
226 MIDDLE AVE. ELYRIA, OHIO

SURVEYED BY: N/A

CLOSURE: N/A

MAP PAGE(S): 6-79

APPROVED BY: RRM DATE: 2-18-11

SCALE: 1" = 50' PRIOR INST.: 20060162523