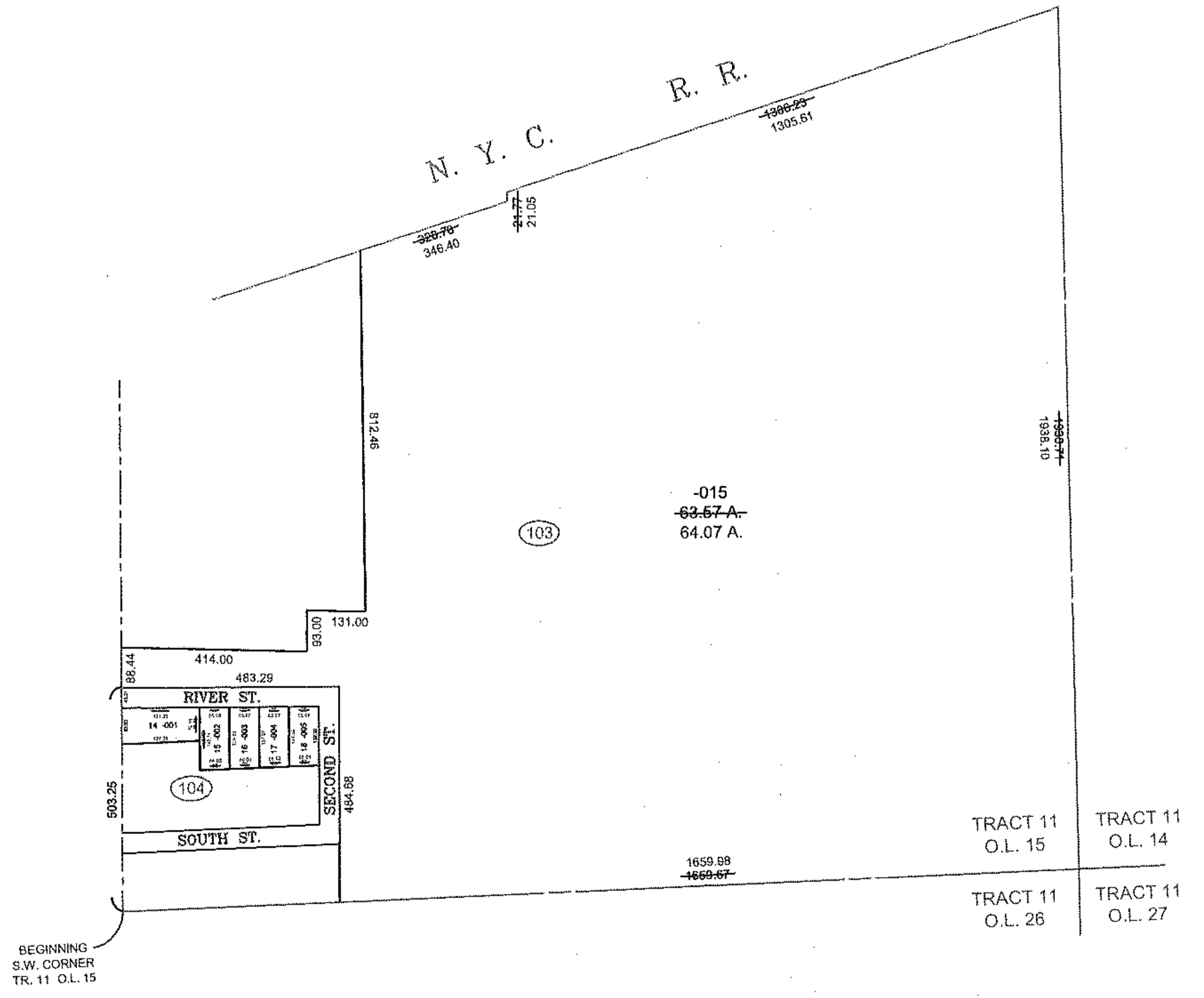
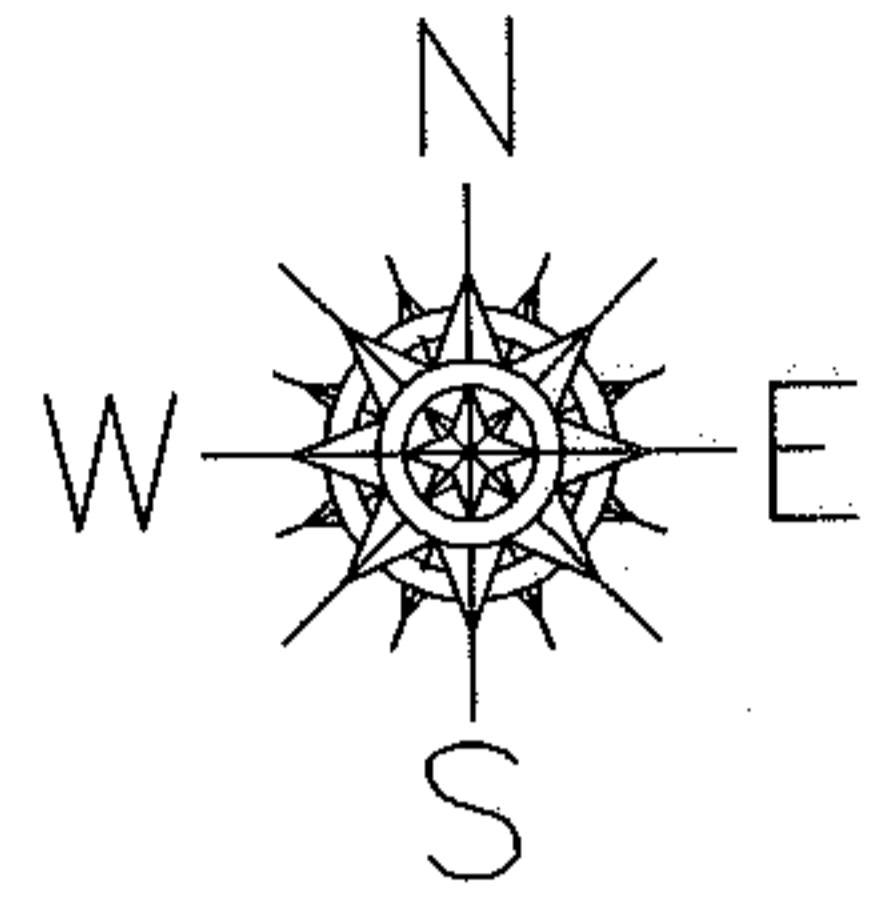


RASTER

PARENT PARCEL: 13-11-015-103-015 , 13-11-015-104-001 THRU -005  
CHILD PARCEL: XX-XX-XXX-XXX-XXX  
ARTING POINT: S.W. CORNER OF TRACT 11 O.L. 15

11-02201-A



**SPLITS/DEEDS PROCESSED**  
**LORAIN COUNTY TAX MAP DEPARTMENT**  
 226 MIDDLE AVE. ELYRIA, OHIO

SURVEYED BY: THOMAS A. SIMON  
 CLOSURE: 0.01 : 10,000  
 MAP PAGE(S): 13-11-015  
 APPROVED BY: TJS DATE: 1/14/11  
 SCALE: 1" = 400 PRIOR INSTRUMENT: 20040028237