

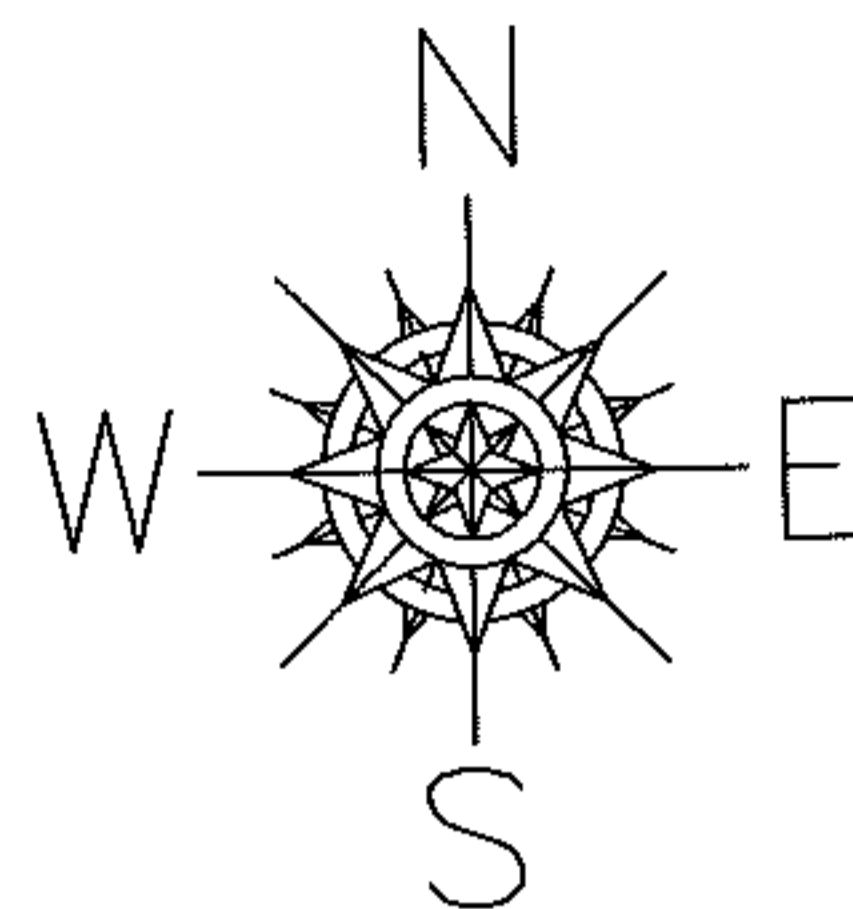
RASTER

PARENT PARCEL: 03-00-081-103-008

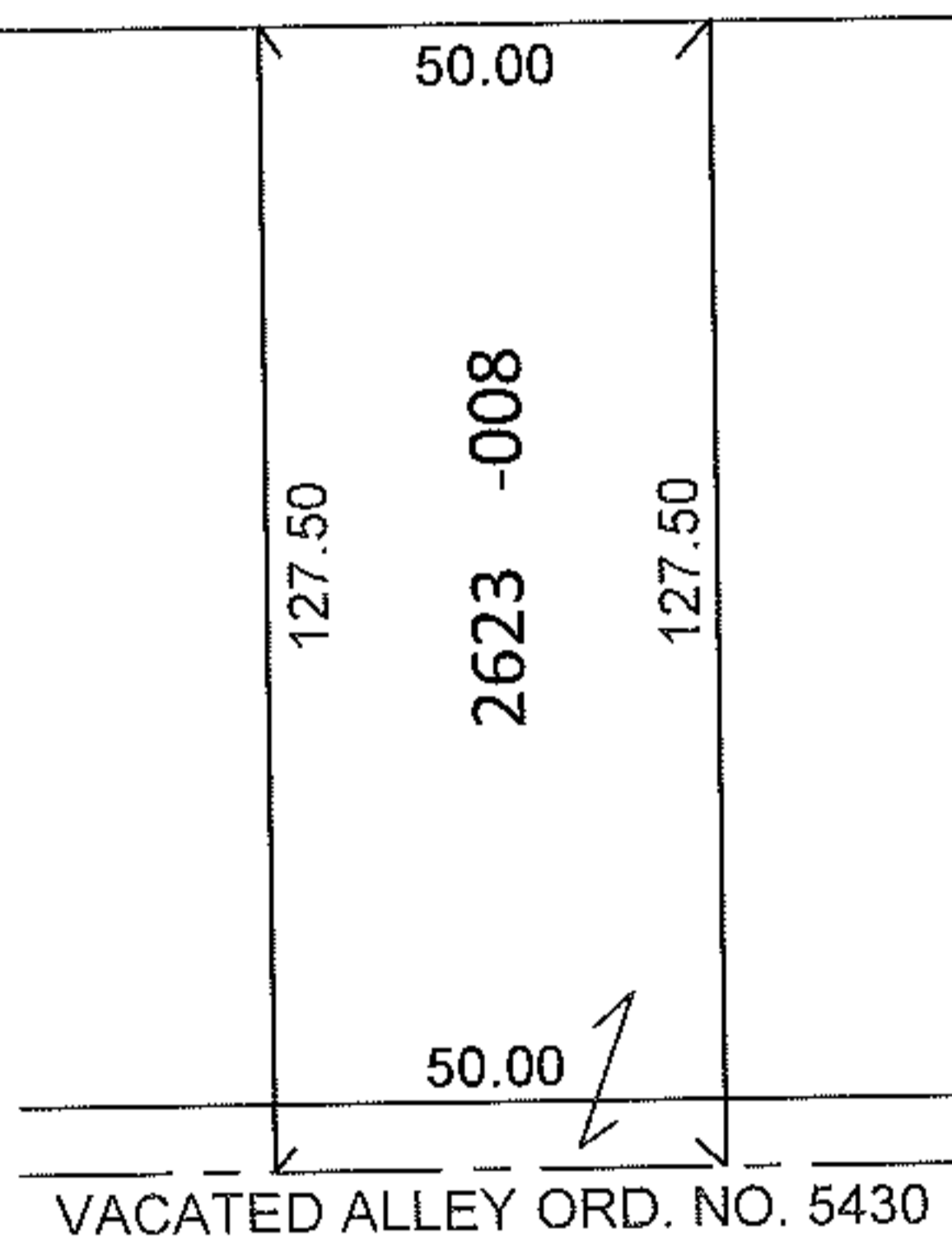
CHILD PARCEL:

STARTING POINT: S/L 2623 IN SHEFFIELD LAND AND IMPROVEMENT CO.'S SUB. NO.4 (VOL.6 PG.3)

11-02197-C



34TH ST.



DEPTH CORRECTION

03-00-081-103-008

127.50

50 X ~~120~~

PER DEED AND
VAC. ORD. 5430

SPLITS/DEEDS PROCESSED

LORAIN COUNTY TAX MAP DEPARTMENT
226 MIDDLE AVE. ELYRIA, OHIO

SURVEYED BY: N/A

CLOSURE: N/A

MAP PAGE(S): 3-00-081-A

APPROVED BY: RRM DATE: 2-18-11

SCALE: 1"= 50' PRIOR INST.: 20050096896