

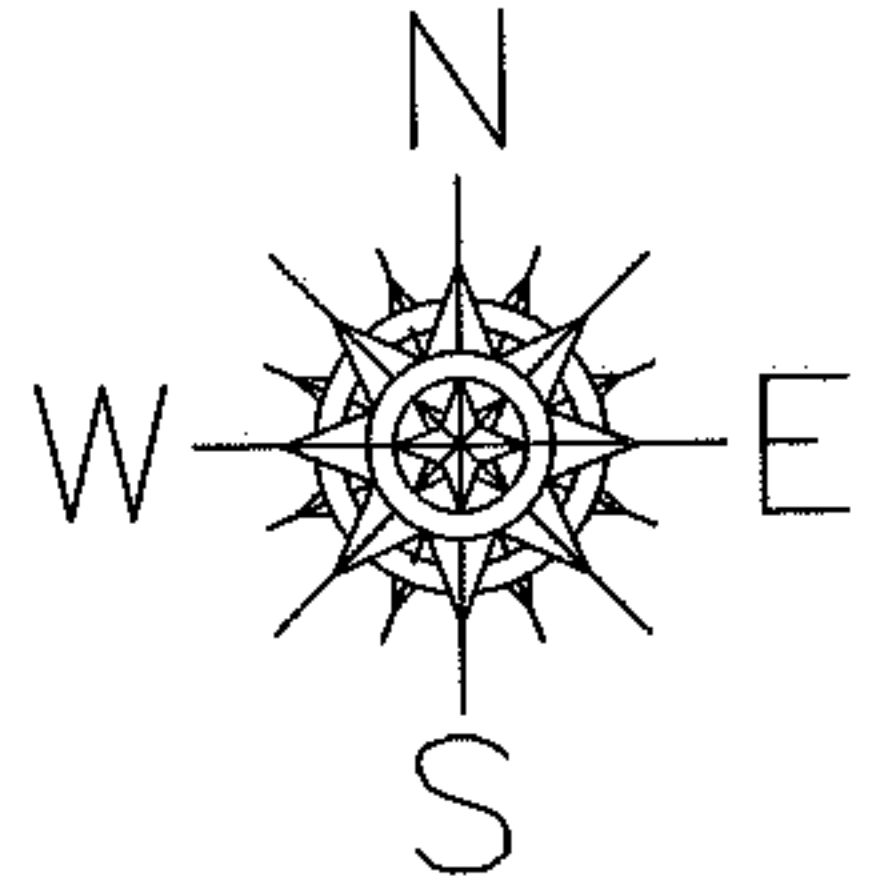
RASTER

PARENT PARCEL: 08-20-024-000-028 & -029

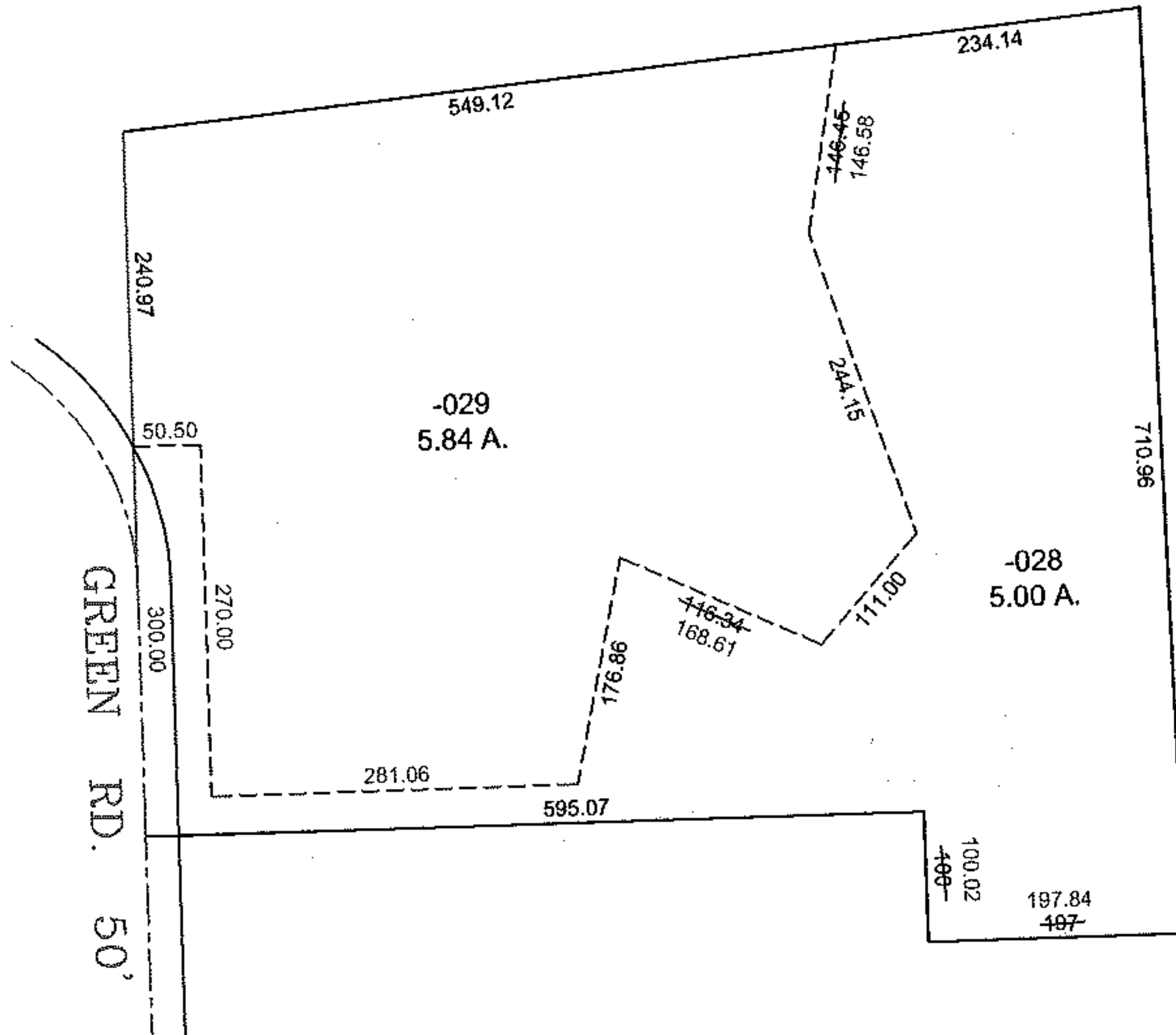
CHILD PARCEL: XX-XX-XXX-XXX-XXX

STARTING POINT: S.W. CORNER OF LAND CONVEYED TO FRANK A. & SUSAN A. HESS

11-02196-C



MAP CORRECTION ONLY
DIMMENSION & LINE CORRECTION



SPLITS/DEEDS PROCESSED

LORAIN COUNTY TAX MAP DEPARTMENT
226 MIDDLE AVE. ELYRIA, OHIO

SURVEYED BY: GARY E. PENFOUND

CLOSURE: 0.01 : 10,000

MAP PAGE(S): 8-E

APPROVED BY: TJS DATE: 1/12/11

SCALE: 1"= 200 PRIOR INST.: 20030922350