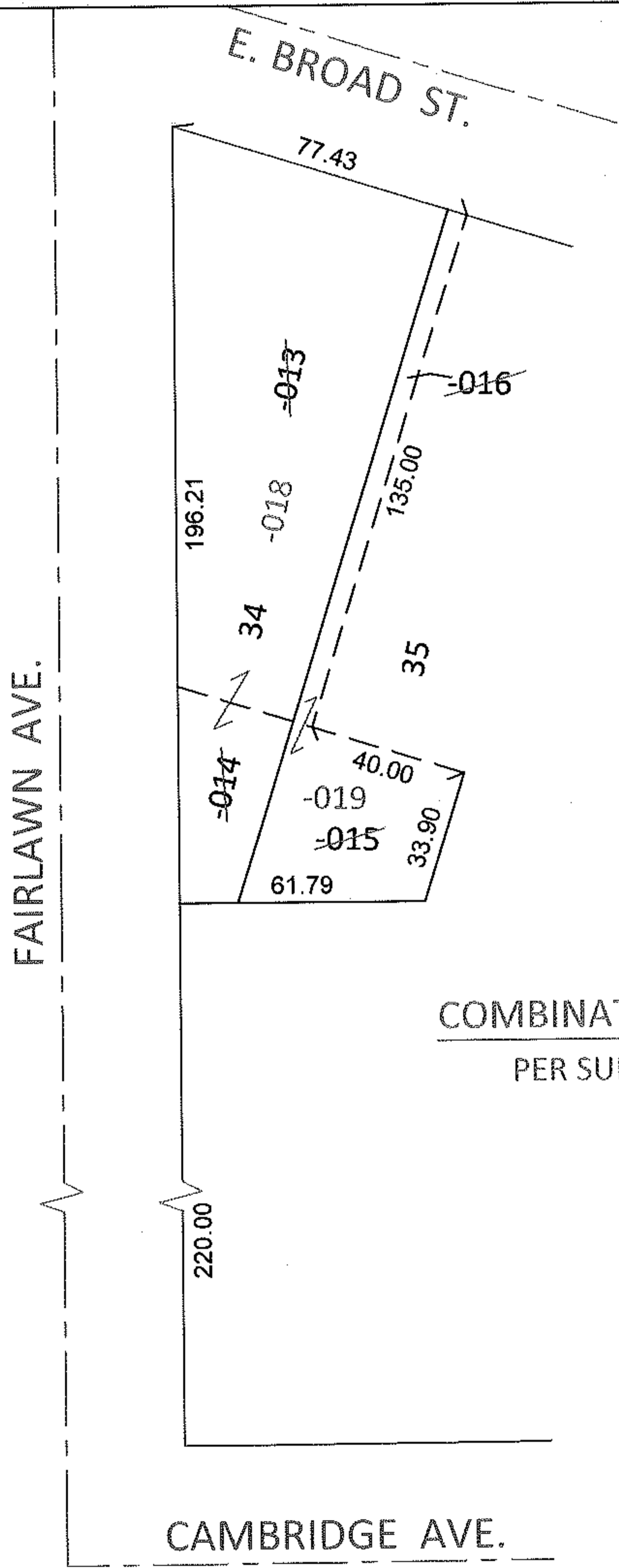
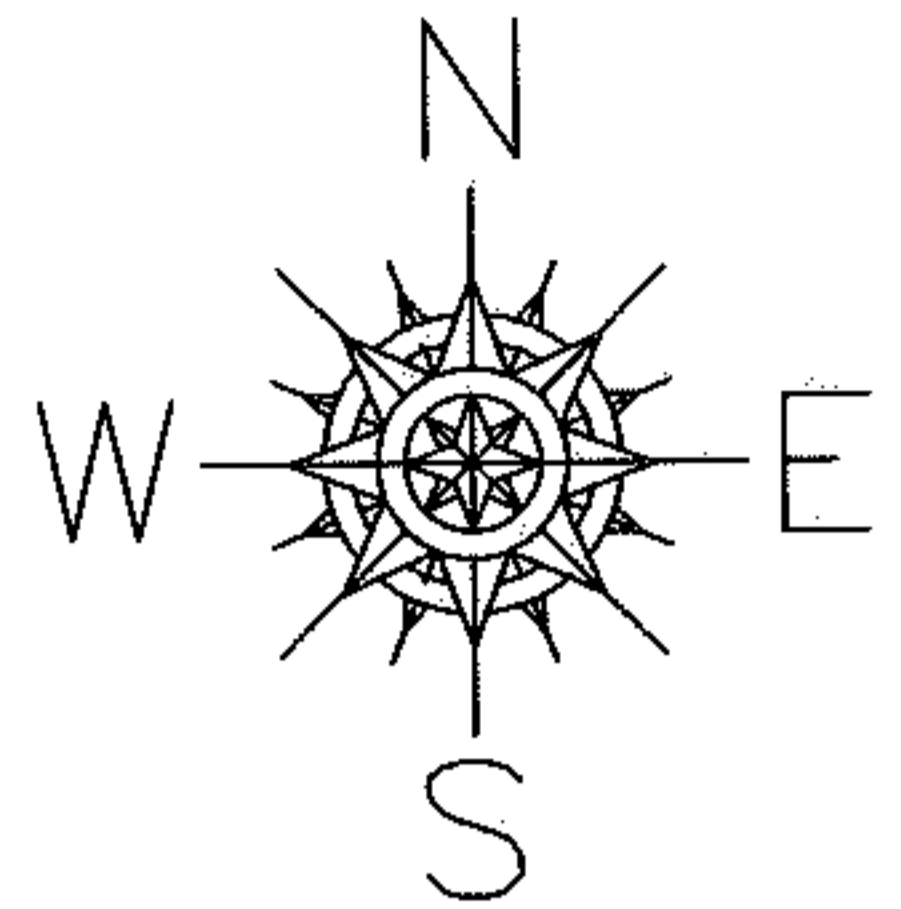


RASPER

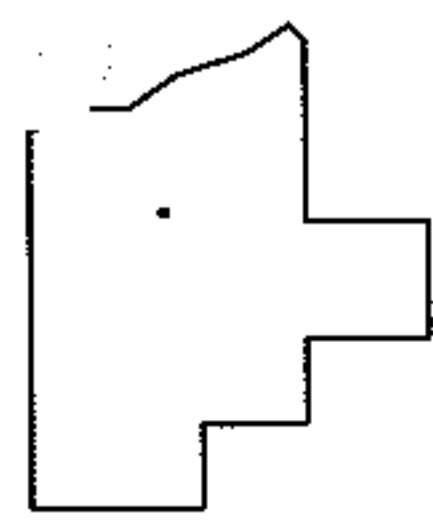
PARENT PARCEL: 06-25-015-112-013 THRU -016  
CHILD PARCEL: 06-25-015-112-018, -019  
STARTING POINT: INTERSECTION OF EAST R.O.W. OF FAIRLAWN AVE. AND NORTH R.O.W. OF CAMBRIDGE AVE.

11-02190-D



06-25-015-112-018  
196.21 X 72.43  
06-25-015-112-019  
5 X 168.90

COMBINATION CORRECTION  
PER SURV. BY T. NEFF JR.



SPLITS/DEEDS PROCESSED  
LORAIN COUNTY TAX MAP DEPARTMENT  
226 MIDDLE AVE. ELYRIA, OHIO

SURVEYED BY: THOMAS J. NEFF JR.  
CLOSURE: .00:10,000  
MAP PAGE(S): 6-123  
APPROVED BY: RRM DATE: 1-10-11  
SCALE: 1"= 50' PRIOR INST.: 20070194525