

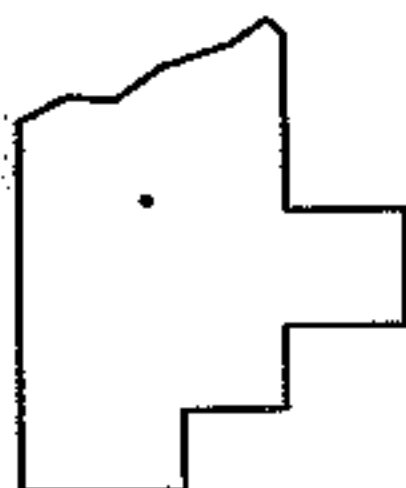
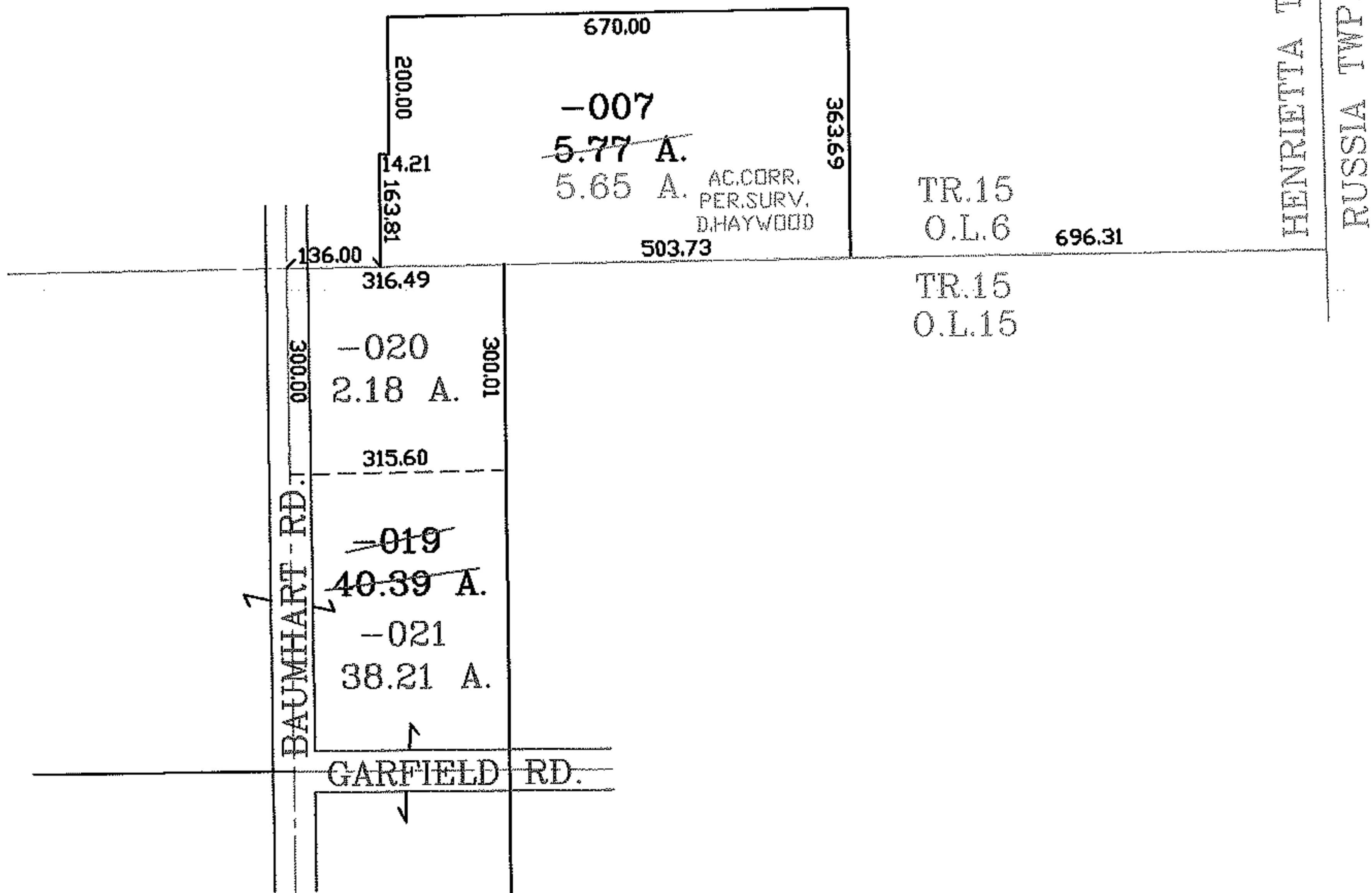
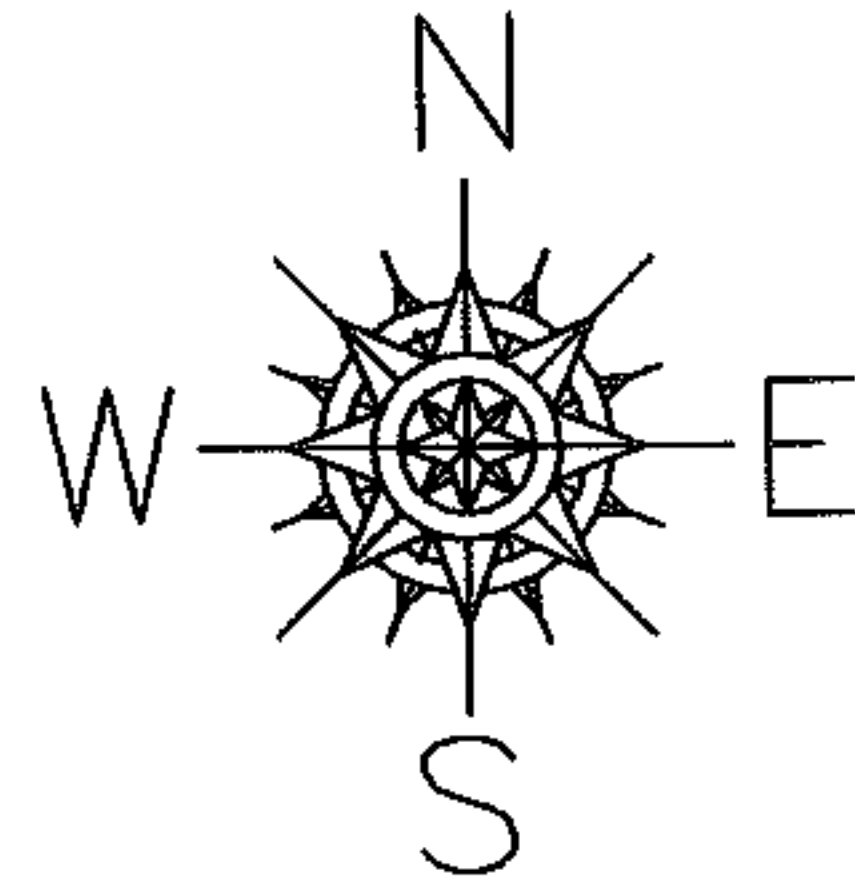
RASTER

PARENT PARCEL: 08-15-015-000-019, 08-15-006-000-007

CHILD PARCEL: 08-15-015-000-020, -021

STARTING POINT: SOUTHEAST CORNER OF TR.15 O.L.6

06-02181



SPLITS/DEEDS PROCESSED
 LORAIN COUNTY TAX MAP DEPARTMENT
 226 MIDDLE AVE. ELYRIA, OHIO

SURVEYED BY: DALE R. HAYWOOD
 CLOSURE: .00:10.000
 MAP PAGE(S): 8-D
 APPROVED BY: RRM DATE: 6-29-06
 SCALE: 1" = 300' PRIOR INSTRUMENT: OR 553/948