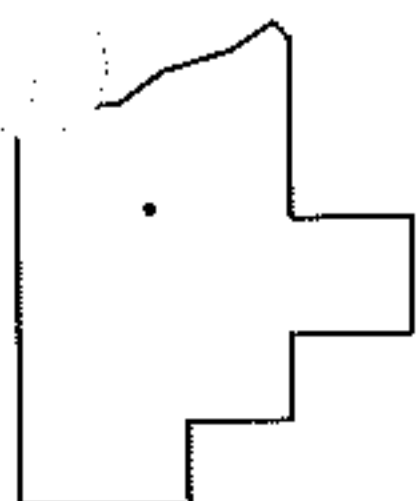
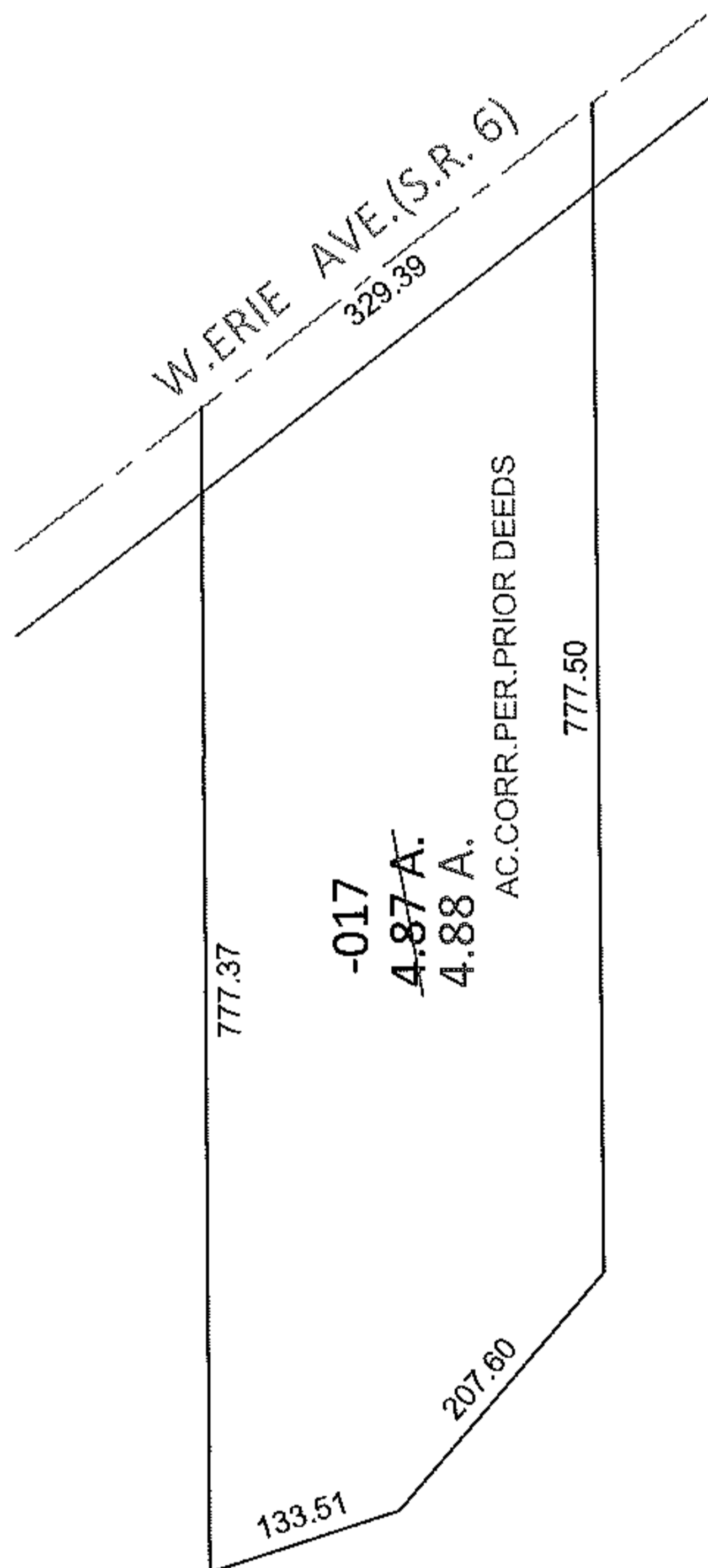
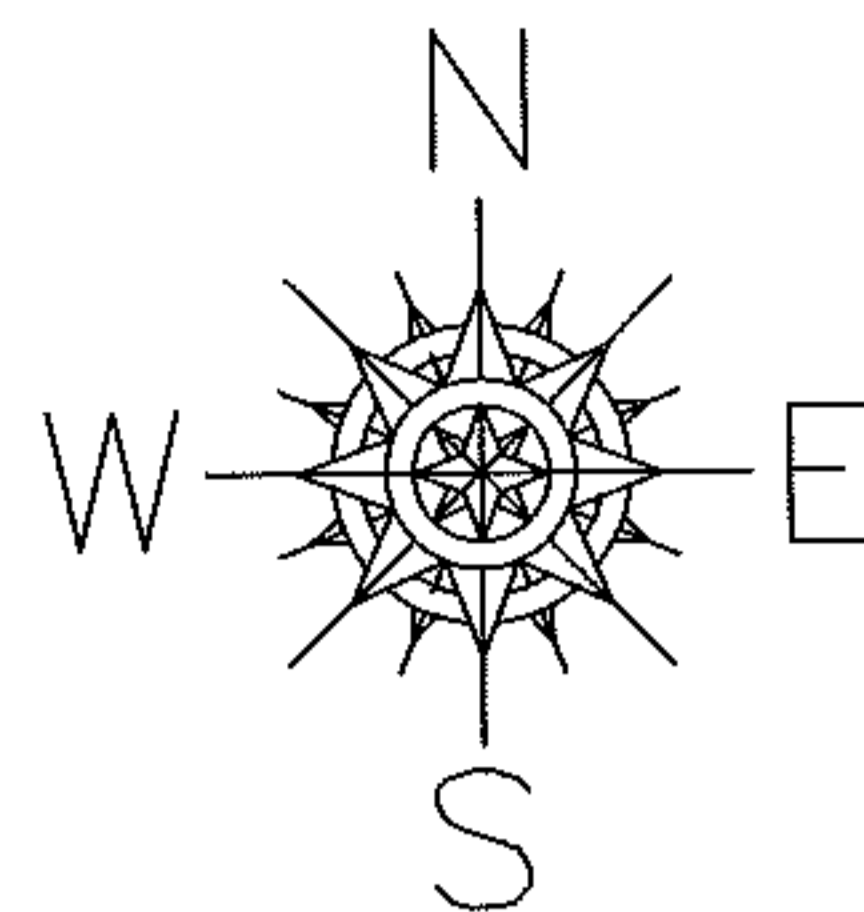


PARENT PARCEL: 02-02-020-102-017

CHILD PARCEL: _____

STARTING POINT: NORTHWEST CORNER OF LAND CONVEYED TO CITY OF ELYRIA(DV 88/252)

11-02179-C



SPLITS/DEEDS PROCESSED

LORAIN COUNTY TAX MAP DEPARTMENT
226 MIDDLE AVE. ELYRIA, OHIO

SURVEYED BY: N/A

CLOSURE: N/A

MAP PAGE(S): 2-02-020-A

APPROVED BY: RRM DATE: 2-17-11

SCALE: 1" = 200 PRIOR INST.: DV 1396/97