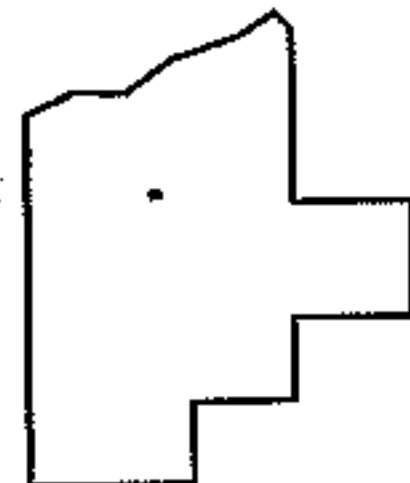
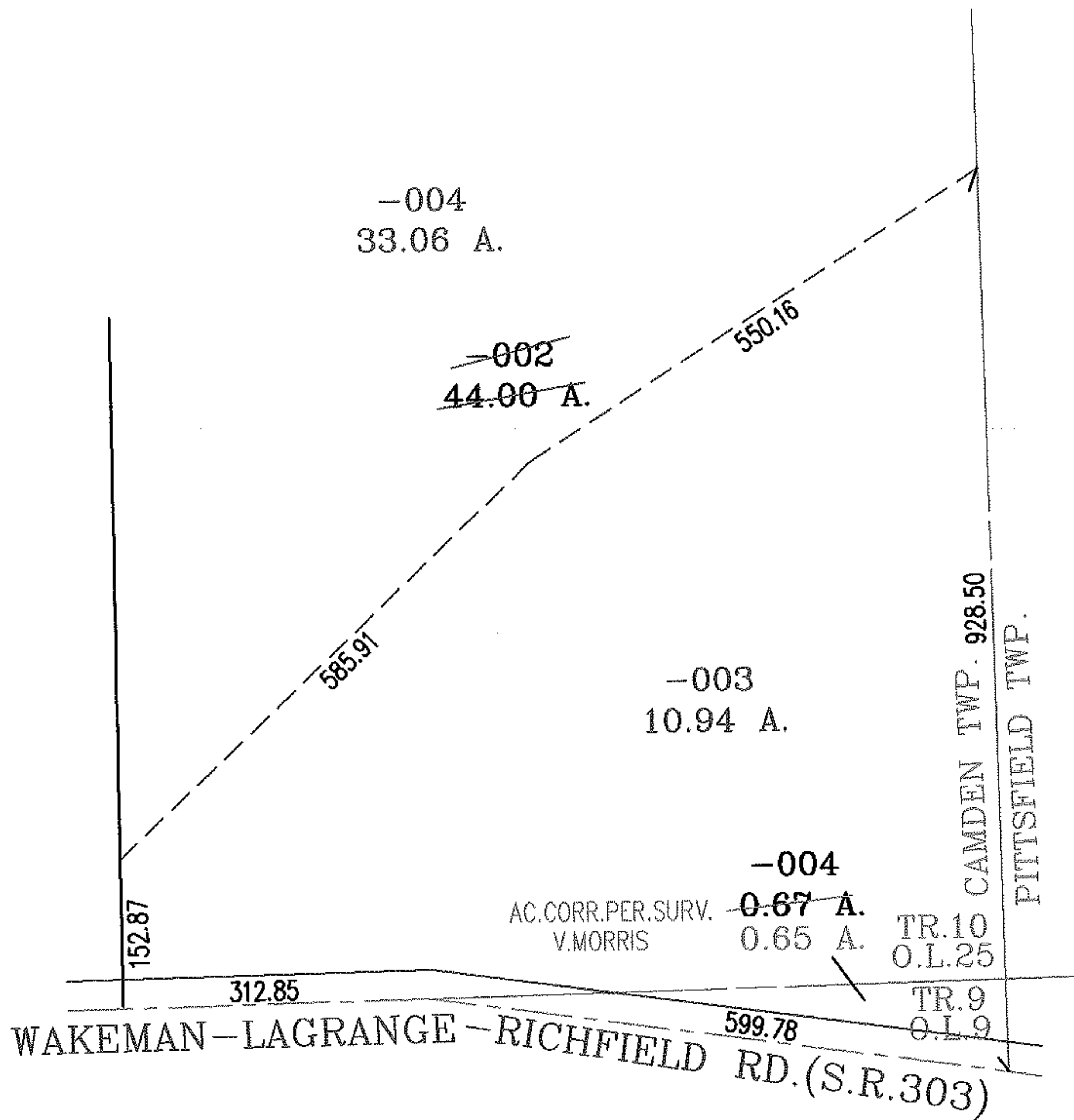
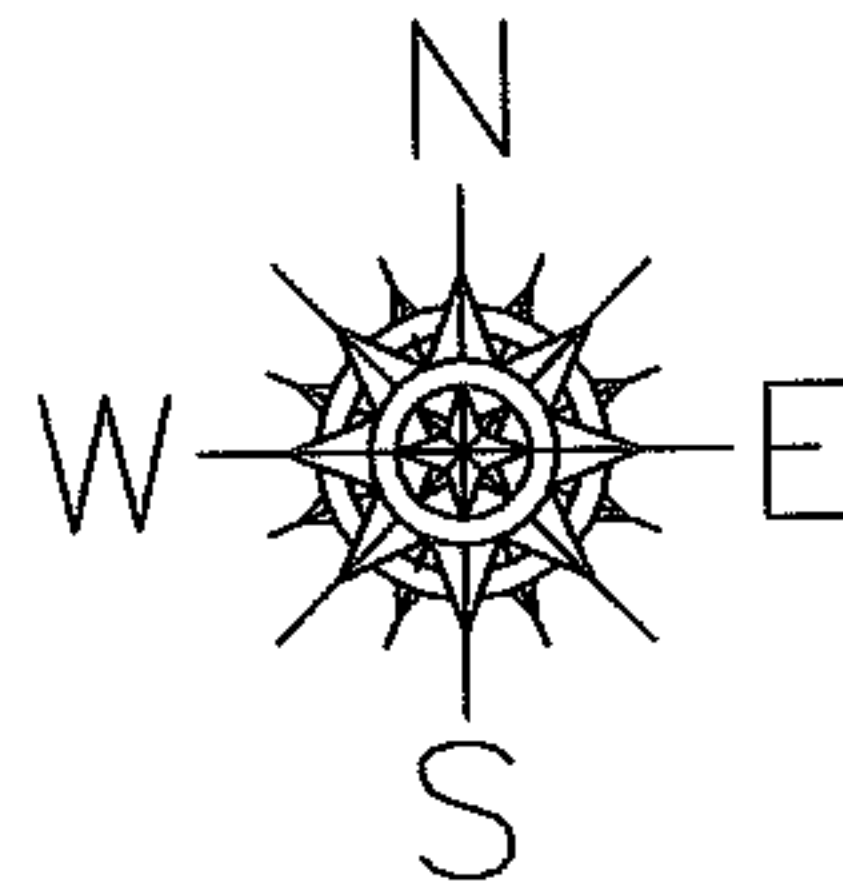


PARENT PARCEL: 13-10-025-000-002, 13-09-009-000-004

CHILD PARCEL: 13-10-025-000-003, -004

STARTING POINT: INTSECTION OF C/L OF S.R.303 AND EAST LINE OF CAMDEN TWP.

06-02177



**SPLITS/DEEDS PROCESSED**  
 LORAIN COUNTY TAX MAP DEPARTMENT  
 226 MIDDLE AVE. ELYRIA, OHIO

SURVEYED BY: VICTOR A. MORRIS  
 CLOSURE: .01:10.000  
 MAP PAGE(S): 13-D  
 APPROVED BY: RRM DATE: 6-28-06  
 SCALE: 1" = 200 PRIOR INSTRUMENT: 20050076874