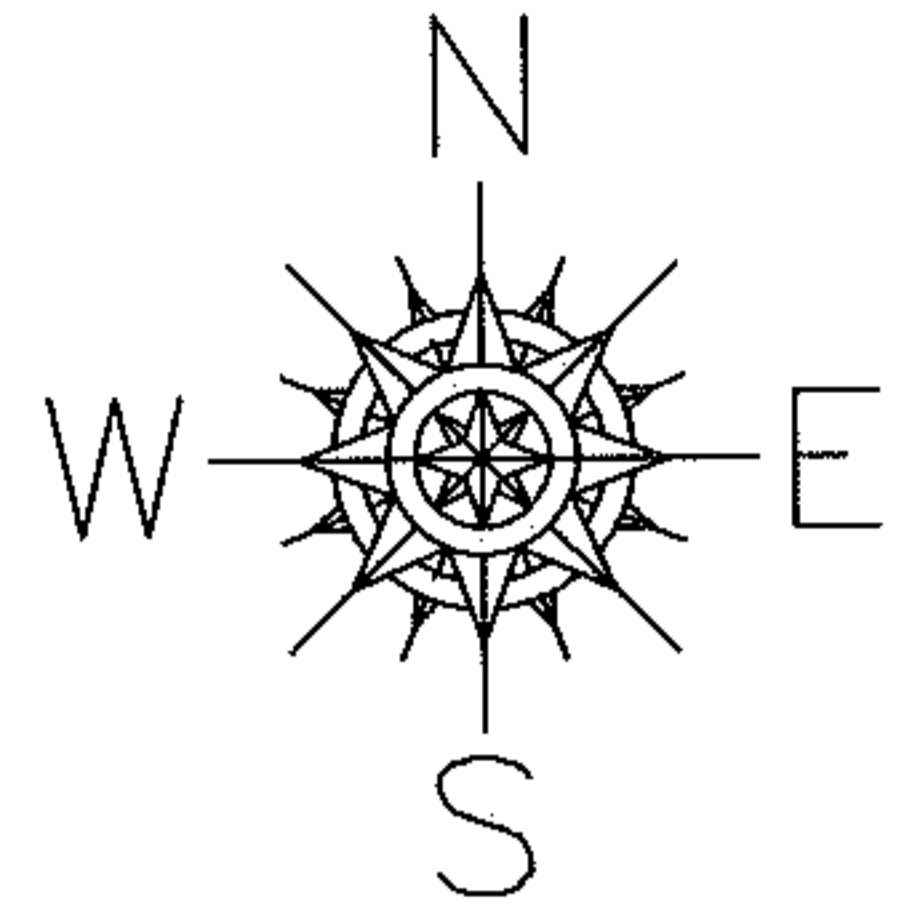


PARENT PARCEL: 02-02-025-118-011

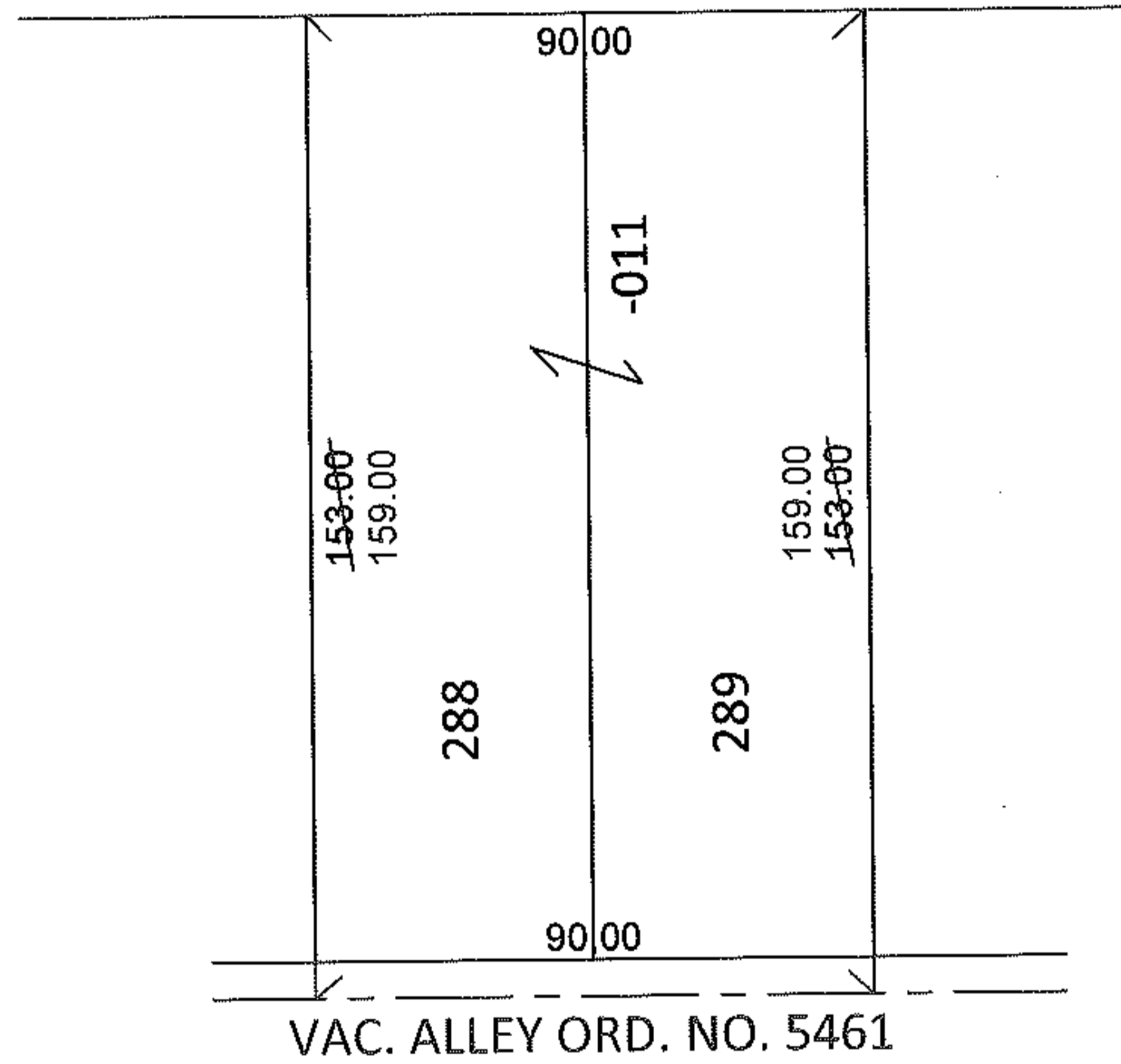
CHILD PARCEL: _____

STARTING POINT: S/L'S 288 & 289 IN OAKLAND ADD. (VOL.4 PG.17)

11-02177-C



20TH ST.



DEPTH CORRECTION

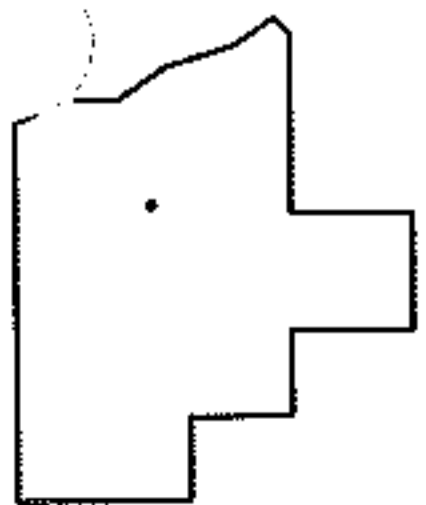
02-02-025-118-011

159

90 X ~~153~~

PER ORD. NO. 5461

AND SHERIFF DEED 20110359727



SPLITS/DEEDS PROCESSED

LORAIN COUNTY TAX MAP DEPARTMENT
226 MIDDLE AVE. ELYRIA, OHIO

SURVEYED BY: N/A

CLOSURE: N/A

MAP PAGE(S): 2-02-025-A

APPROVED BY: RRM DATE: 2-8-11

SCALE: 1"= 50' PRIOR INST.: 20000680845