

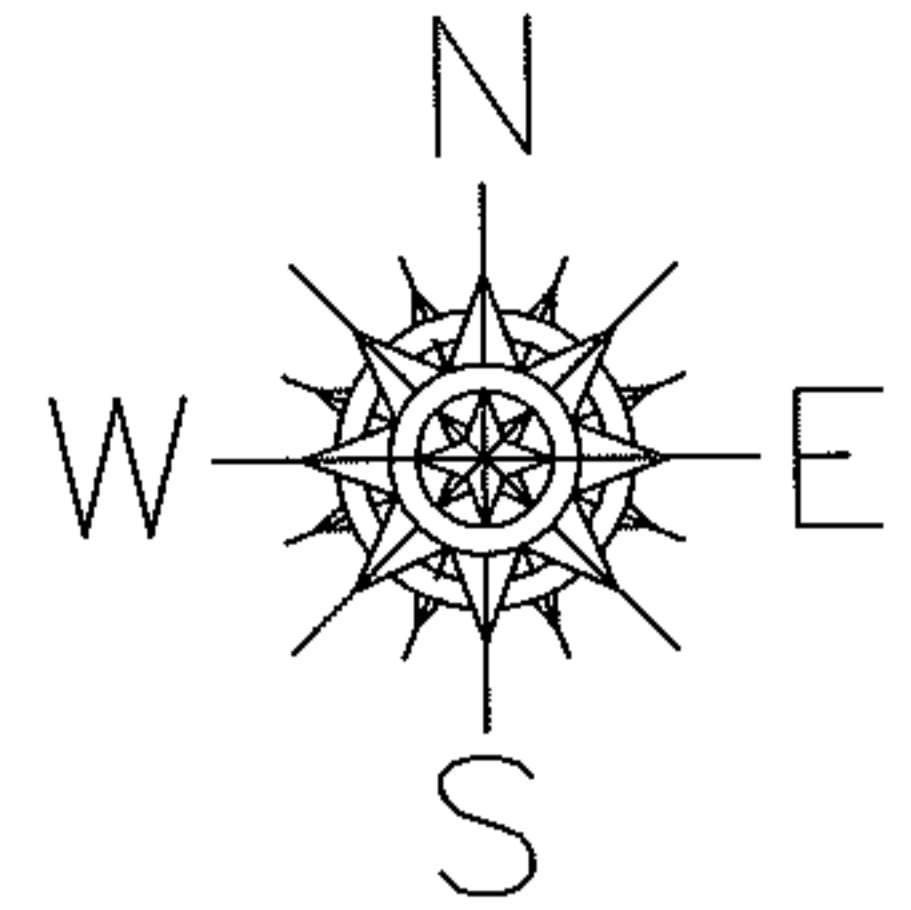
RASPER

PARENT PARCEL: 06-24-070-106-011

CHILD PARCEL: _____

STARTING POINT: PART OF S/L'S 338-340 IN S.MENDELSON'S SUB.(VOL.7 PG.23)

11-02176-C



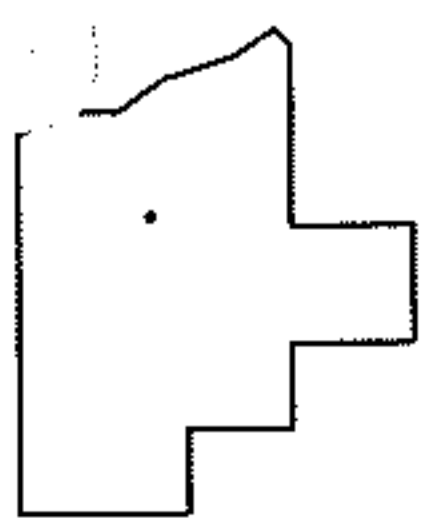
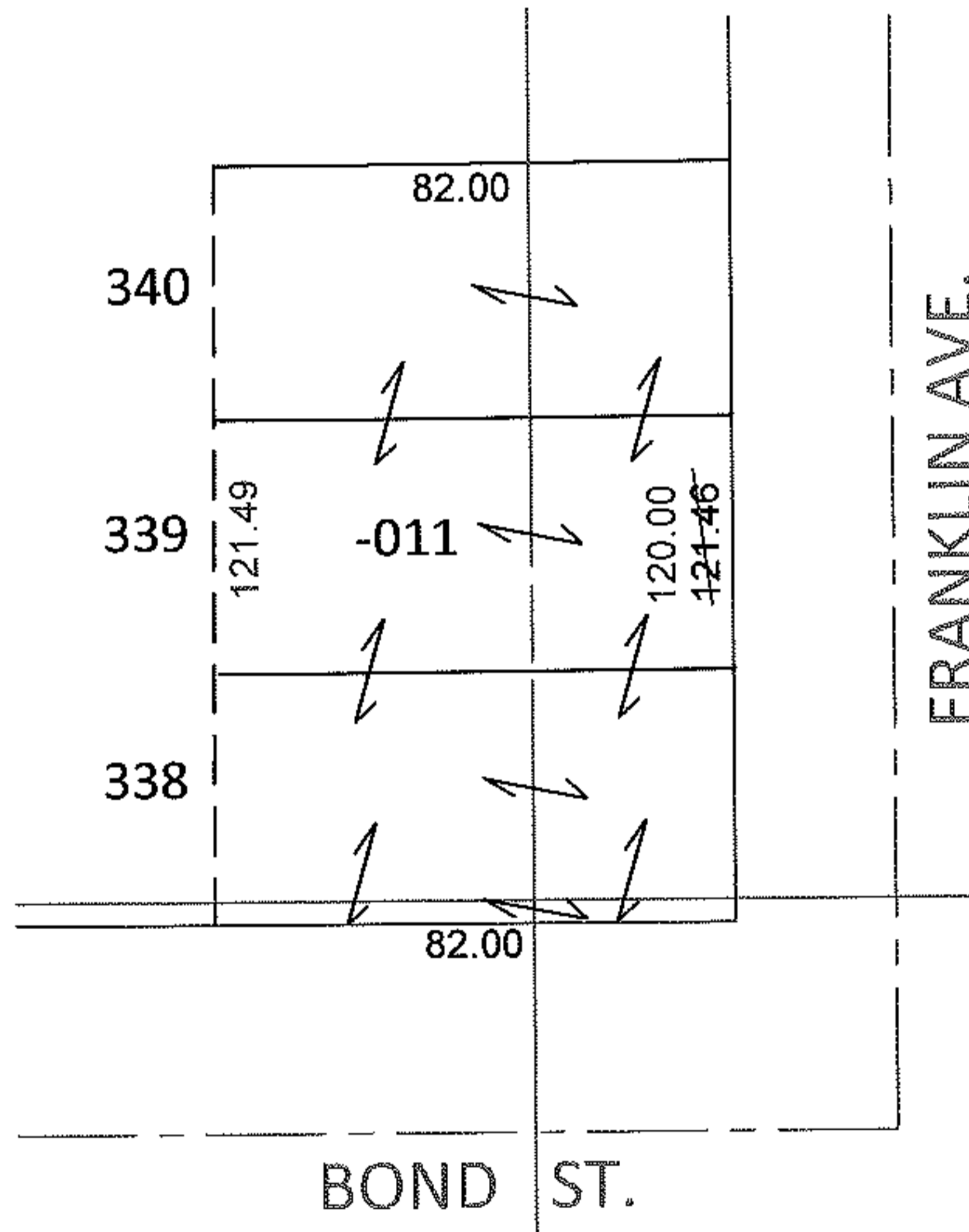
DEPTH CORRECTION

06-24-070-106-011

82 X 121.49

~~82 X 120~~

PER PRIOR DEEDS



SPLITS/DEEDS PROCESSED

LORAIN COUNTY TAX MAP DEPARTMENT
226 MIDDLE AVE. ELYRIA, OHIO

SURVEYED BY: N/A

CLOSURE: N/A

MAP PAGE(S): 6-82

APPROVED BY: RRM DATE: 2-7-11

SCALE: 1"=50' PRIOR INST.: 20100339557