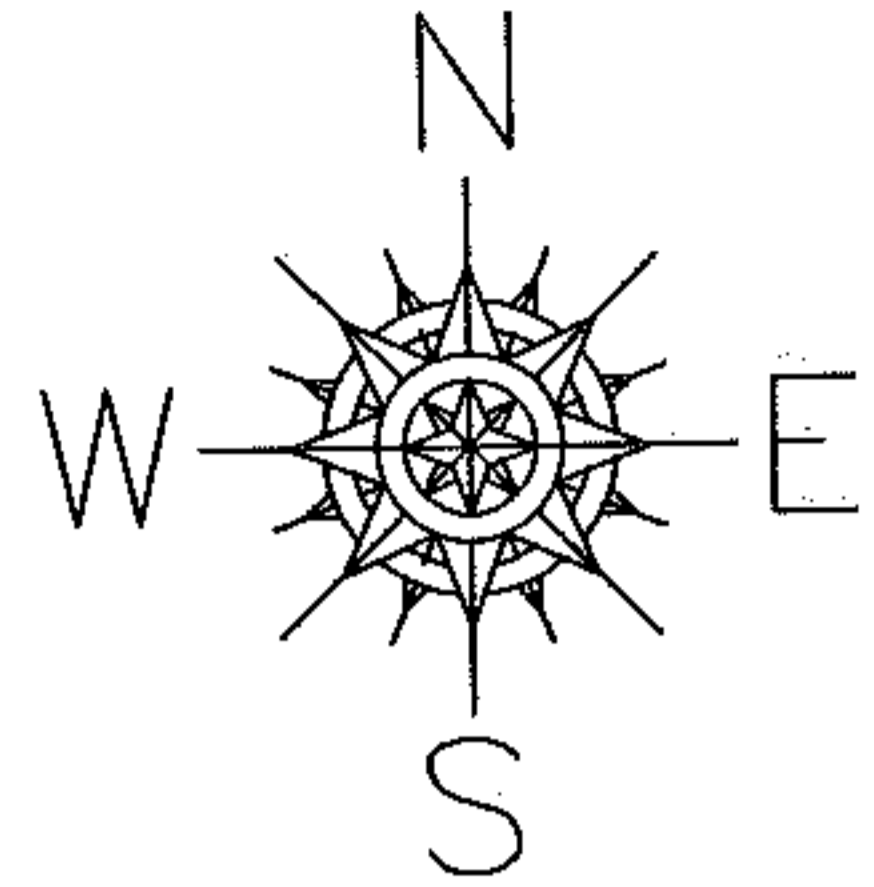


PARENT PARCEL: 04-00-013-000-147

CHILD PARCEL: XX-XX-XXX-XXX-XXX

STARTING POINT: N.E. CORNER OF LAND OWNED BY ALBERT HORWEDEL

10-02159-C



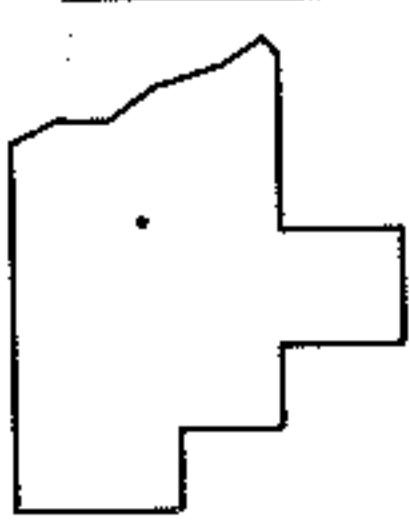
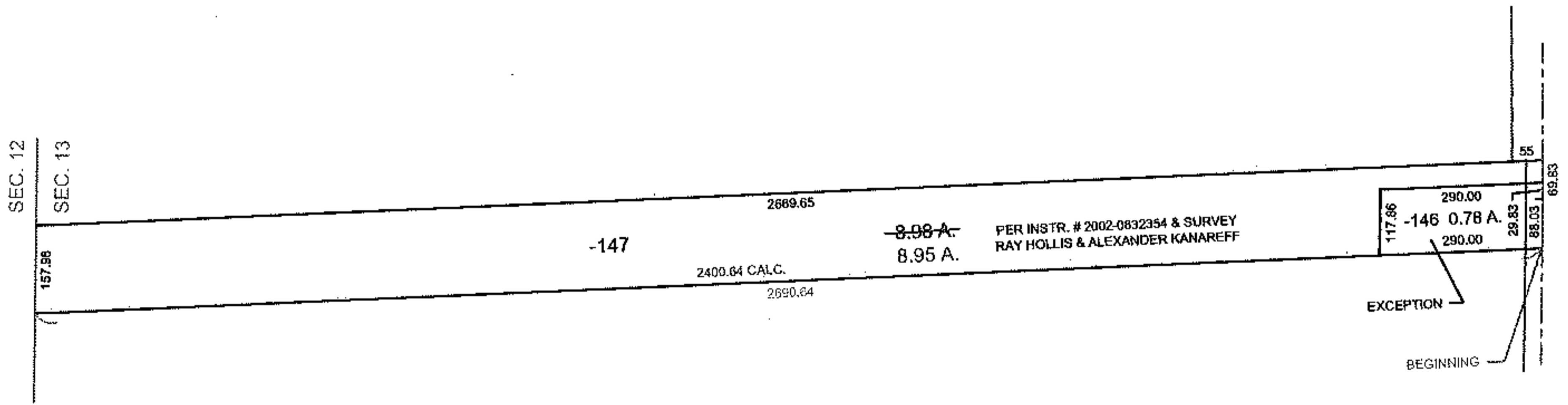
ACREAGE CORRECTION

04-00-013-000-147

~~8.98 A.~~

8.95 A.

PER INSTR. # 2002-0832354 & SURVEY
RAY HOLLIS & ALEXANDER KANAREFF



SPLITS/DEEDS PROCESSED
LORAIN COUNTY TAX MAP DEPARTMENT
 226 MIDDLE AVE. ELYRIA, OHIO

SURVEYED BY: RAY HOLLIS & ALEXANDER KANAREFF
 CLOSURE: 0.01 : 10.000
 MAP PAGE(S): 04-00-013-E & F
 APPROVED BY: TJS DATE: 12/16/10
 SCALE: 1" = 400 PRIOR INSTRUMENT: DV 723/127