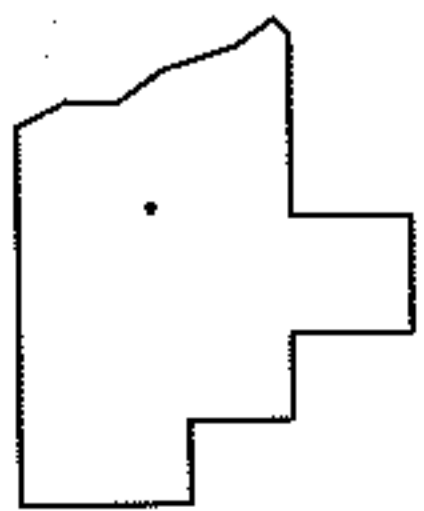
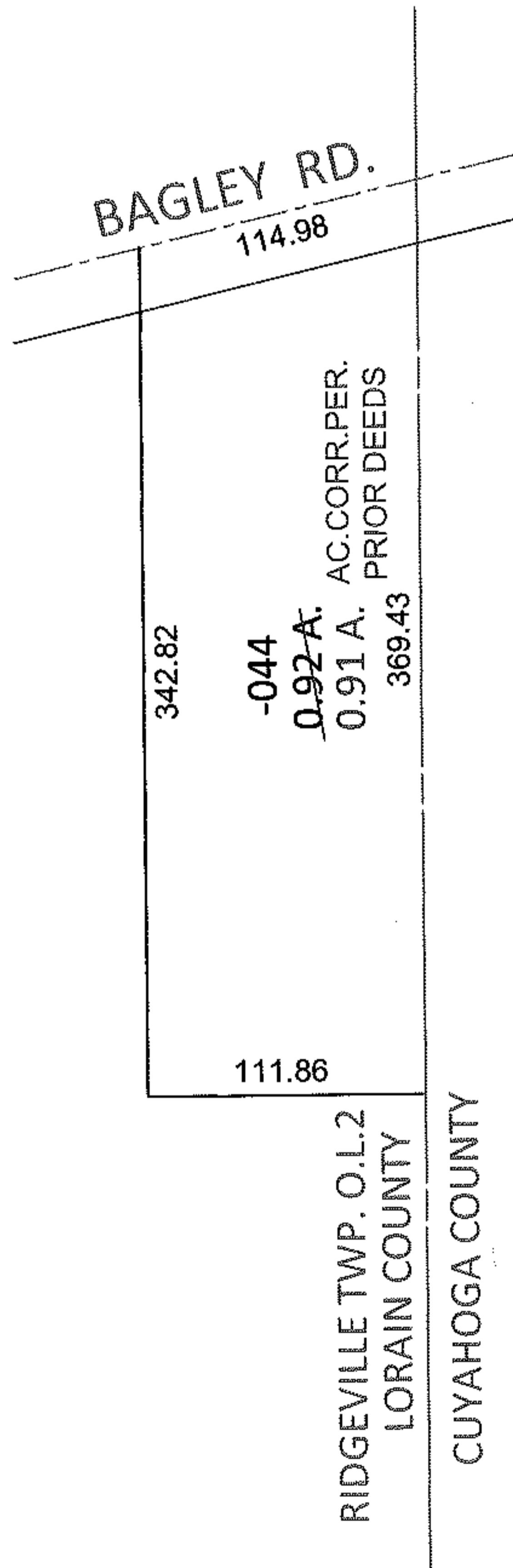
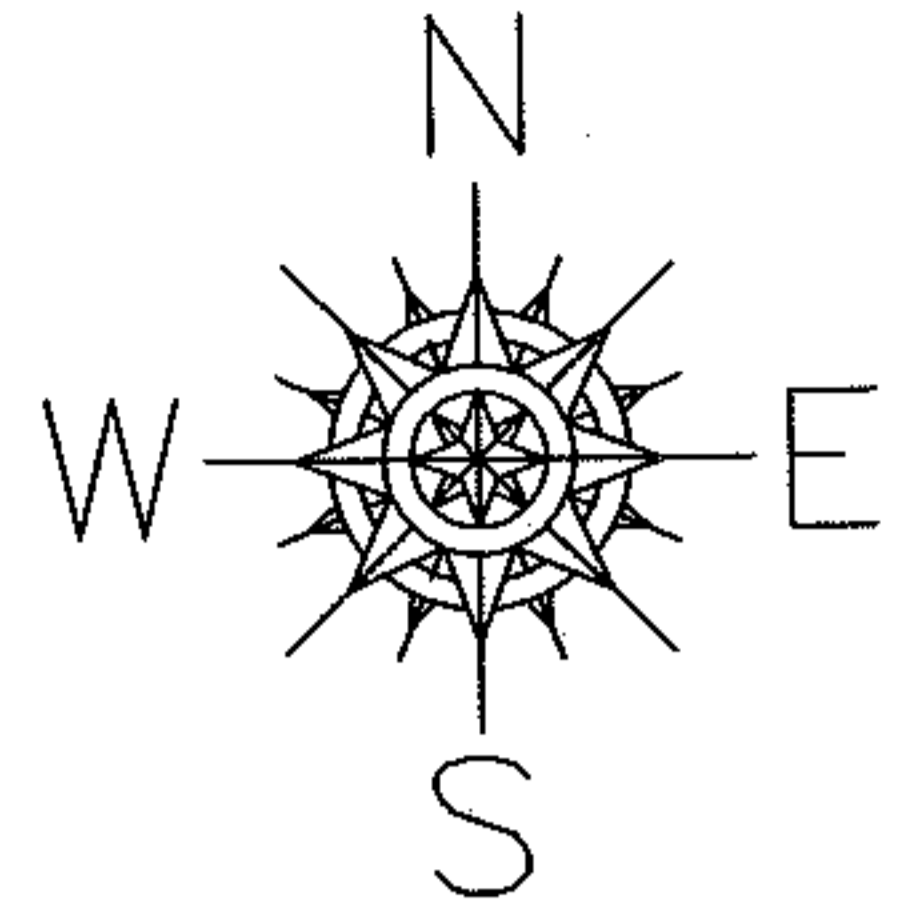


PARENT PARCEL: 07-00-002-102-044

10-02154-A

CHILD PARCEL:

STARTING POINT: INTERSECTION OF C/L OF BAGLEY RD. AND EAST LINE OF JOSEPH SKAPURA LAND (DV 1144/543)



SPLITS/DEEDS PROCESSED

LORAIN COUNTY TAX MAP DEPARTMENT
226 MIDDLE AVE. ELYRIA, OHIO

SURVEYED BY: N/A

CLOSURE: .01:10,000

MAP PAGE(S): 7-00-002-B

APPROVED BY: RRM DATE: 12-13-10

SCALE: 1"= 100 PRIOR INST.: DV 1357/44